



## Correctly understand and apply Yin and Yang in Taiji diagram

Sun Chunwu

Sun Chunwu (1948-), male (Han nationality), Yangzhou City, Jiangsu Province, China, mainly engaged in natural science research; Author's statement: I guarantee that the following article is the copyright owner of this work.

Company name: Yangzhou Sanli Electric Appliance Co., Ltd., Jiangsu Province Postal code 225008 E-mail: yzscw0514@163.com micro signal scw20171020

**Abstract:** With the integration of China, I like to move the arrow of the dynamic field on the Taiji diagram to the heart of one of the following laws of motion, the creation of Yin and Yang, the movement of gold, wood, water, fire and the earth, so as to raise all philosophical thoughts of evolution. Taoism's inaction of WTO emphasizes the unity and contradiction of opposites. Confucius is indeed another rumor of centrifugal movement, such as arrow, kindness, justice, etiquette, wisdom and belief in the birth of Confucianism, which inherently promises the highest degree of ethical adaptation. Unfortunately, they usually look at the problems from the macro and micro perspectives. I don't really understand the voltmeter picture of Taiji Bagua. There is no way to find the source below, and I don't explain all the real meanings displayed by Taiji Bagua, which can't play a huge role in science and technology.

[Sun Chunwu. **Correctly understand and apply Yin and Yang in Taiji diagram.** *Researcher* 2023;15(7): 15-28]. ISSN 1553-9865 (print); ISSN 2163-8950 (online). <http://www.sciencepub.net/researcher>. 03.doi:[10.7537/marsrsj150723.03](https://doi.org/10.7537/marsrsj150723.03).

**Keywords:** Taiji diagram, elliptic trend diagram. Material; Mass energy; Force; Eccentric scroll engine; Planet; Galaxies; Centripetal force centrifugal force; Density wave

The letter from Chen Yiwen, a British Chinese consultant from China Academy of Sciences, to the China Scientists Forum (August 2005) pointed out that many people have not yet realized sensitively that many fields of science and technology in the world are on the eve of a great storm of scientific and technological revolution that will bring about major scientific and technological innovations to the original basic theories. In which country the great storm of scientific and technological revolution is first set off, which country will benefit first; Which universities can be sensitive enough to this, which universities can be prepared and benefit from it. On the other hand, which universities don't feel anything about it may fall behind, and so far no one cares or believes it.

I hope my article can attract the attention of experts and teachers. Because the 21st century is the century in which China people make the greatest contribution to the physical world, and it is also the century that should win the Nobel Prize, just like the century that has mushroomed, I send a good message to the world that a work to improve the dynamic field of philosophy and physics has started, and I just want to invite experts to attract jade.

Why China people haven't won the Nobel Prize so far? There are a set of new standards for science courses that American students should study, such as not advocating learning Darwin's theory of evolution,

because his theory can't be replicated and confirmed in practice. The unique ancient Taiji diagram in China's education circle has a very grand philosophy, which is particularly convenient and applicable to explain everything, and it also knocks on the door of the modern science hall. It is true that a few people are interested in and study, and always think that it is urgent to really solve the Taiji Eight Diagrams to serve modern science because of its long history. What was the inspiration and how was it created? What are the functions of taiji diagram? What was the purpose of creating it? And who wrote Zhouyi and what kind of book is it?

Mr. Wang Xiyu believes that the congenital ancient Taiji Eight Diagrams was produced in the Neolithic Age at least 6,000 years ago, and it was painted by Fu Xishi, the intellectual pioneer of all mankind and the ancestor of China people. With the help of high-functional information and the enlightenment of the remains of the last round of ancient human civilization-the river map and Luo Shu, he looked up and down, like heaven, law and earth, approached himself and involved in all things, so as to have an epiphany, draw a map of ancient Taiji Eight Diagrams and pass it on to this day, which has become a guide for modern human beings to understand the universe.

Mr. Gan Quan believes that the Book of Changes is a collective work. After the interpretation of philosophers of past dynasties, it has developed into a

profound philosophical work. At the same time, it is also a classic about natural science and social science in ancient China. The ancients used Zhouyi to predict the future, make decisions on state affairs and reflect current phenomena. Go up to the sky, down to the ground and down to the personnel. However, this is only a means that the ancients relied on before they mastered the scientific method, and it is not a real science. Although some understandings are consistent with science, it is because this understanding is just scientific and reasonable, but it cannot be said that it is scientific. It can only be regarded as a culture.

Zhao Yuwen, an expert, said that the virtuous cycle of the politics of "helping the poor with the rich and pushing the top from below" began in the ancient United Nations from about 7000 BC to 3151 BC. After 4,500 years, Shennong, Huangdi, Yao Shunyu, Shang Tang Yi Yin, Zhou Wenwang, Duke Zhou, Confucius and others paid tribute to the fire, which lasted for 6,500 years. Finally, it was about 2,500 years ago and later in the Qin and Han Dynasties that the Taiji Daolu Sutra was completed.

I also think their research results are very valuable. However, no one has really understood the Taiji diagram and its origin since ancient times, and there is no conclusive evidence to solve the mystery of Taiji Bagua diagram. Therefore, there is still no significant progress in the exploration of the principles of Yi-ology in China, the theoretical research is stagnant, the thinking is chaotic, and the practical application tends to mysticism. The above-mentioned imperfect understanding has seriously affected the academic status and scientific value of Taiji, and hindered the benign development of Chinese Yi-ology. Firstly, the origin and original intention of the word "Zhouyi" are solved. As for the word "Zhou" in Zhouyi, there have always been many opinions. For example, some people think that Zhou means "Yi Dao Zhoupu is ready for everything"; Some people think that Zhouyi refers to the Zhou Dynasty. The Zhou dynasty was accepted by ordinary people, and many people thought that the word "Zhou" in Zhouyi meant time.

In Simple Tao Te Ching, Zhou is thoughtful and complete, which means that the movement changes without results. I think the week is the week that expresses the spin cycle of everything. Knowing the spin cycle, it is meaningful for you to demonstrate the function and change of a living person. It's easy for you to know why it can make a spin cycle, and it's easy for you to know the past, the present and the future when its movement changes fruitlessly. It's like knowing that in the six periods of a person's life, infants need to breastfeed, teenagers are studying, middle-aged people are working, and when they are successful, they will enjoy the natural laws of their later years.

The following is a brief overview of Zhouyi to

explain its origin. It is said that the birthplace of Zhouyi is Anyang, a world heritage city. Qili city is located 10 kilometers south of Anyang city. Taiji in daoist magic's book may be created by the river map, Luo Shu or tortoise shell burning deformed lines, etc. Inventors know that these two things are unscientific, and it is impossible to invent a new theory without the practice of natural science. It is impossible to establish the theory of eight diagrams when Taiji is created by tortoise shell burning deformed lines. Daoist magic's book also said that aliens may have given the Yellow Emperor a gobbledygook. Who is that alien? No theory can be fabricated out of thin air.

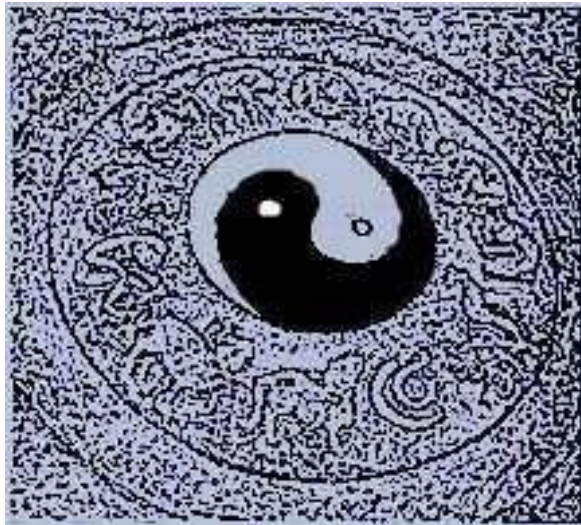
Therefore, I have recently obtained information and found that around 7,000, when Villacochoa or Maya were surveying and mapping China's topography and ground (this matter is recorded in history, and the information can be found in the world number ISBN7-436-39240-9 [[disappearing scientific and technological civilization]], they may have seen Fuxi fighting Chiyou on the land of Yanhuang at that time, with corpses lying everywhere and rivers of blood. But the teacher of justice can't win. Just use your own compass (that is, perpetual motion machine. This car can move forward at that time, or the position of Chiyou is in the south, and the chariot is heading south. The ancients presented this kind of car to Fuxi, which broke the fog created by the fierce Chiyou during the war and ended the protracted war. Maybe there will be a difference in time between them, or there will be a difference in the year of the Yellow Emperor, which will not affect the car. Or Fuxi used the compass invented by the Yellow Emperor to fight, and finally won the war.

I think that at least the Yellow Emperor or together with his ministers, developed the ancient Taiji culture, and he was sure that after the war, he made a study on the south-pointing car. When eight groups of divinatory irons in the disc of the south-pointing car protrude from the top and accelerate downward, and the divinatory irons on the other side contract and bend centripetally from the bottom to the top to slow down, they form a work ball in an eccentric cavity, and the downward pressure is exerted on the isolated surface in the middle section of the big shell on the eccentric side, which emphasizes the vertical downward gravity and drives the south-pointing car to roll forward at a different speed, which is associated with the evolutionary phenomenon that all things in nature, such as society, start over in one yuan.

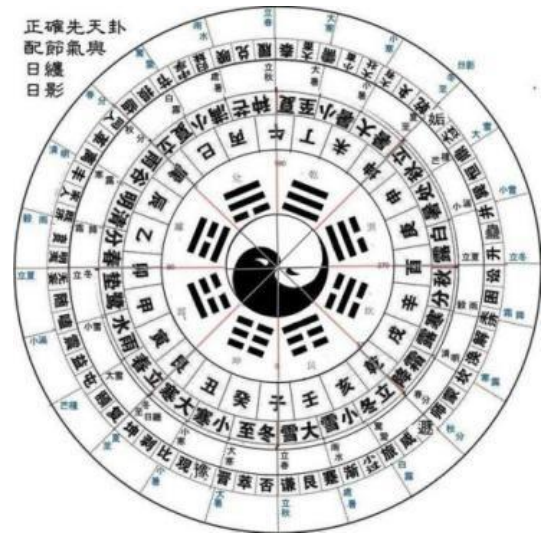
Therefore, the Taiji Yin-Yang diagram and theory of dynamic field are established. And design all kinds of lines and data to facilitate the operation of diviners, just as people use abacus to calculate numbers, to predict the future, make decisions on national affairs and reflect current phenomena. Up to now, the survey of the sky, the survey of the earth and the survey of personnel have

been passed down. It is also possible that Lao Tzu studied the universe and nature at the beginning. For example, every seed has two divisions. After sprouting, one division grows and grows into a leaf, and on the other side, another airflow grows and grows into a leaf. When it rotates upward, it does not reach a symmetrical position, and then it grows a bud and grows into a leaf, and on the other side, it grows a bud and grows into a leaf. In this way, more energy is continuously copied, and plants begin to blossom and bear fruit for a certain period of time. Such as a chestnut on a chestnut tree. When you cut it open, you find that there are two discriminations, one big and one small, and there are also uneven surfaces, which are a bit like diving, so you can identify the two discriminations as yin and yang.

Therefore, in view of the understanding and technological level at that time, it is still the best expression to use yin-yang fish. It also developed Taoist theory along the extension.



As shown in the picture, Yin and Yang, with centripetal force and centrifugal force in today's physics, push friction and heat to generate electricity to generate water molecules, which are copied to produce more water and evolve everything. It is different from Laozi's Tao Te Ching: only "Tao gives birth to one, life to two, life to three, and life to all things". Moreover, the theory of unified field still has problems to solve, such as the size of the object, the force, the speed and the flexible use of time and geographical conditions. Moreover, after accelerating the movement, the natural law problem with more energy is copied. Whoever has a large mass is a unified field, and there is no unchangeable physical model such as gauge field.

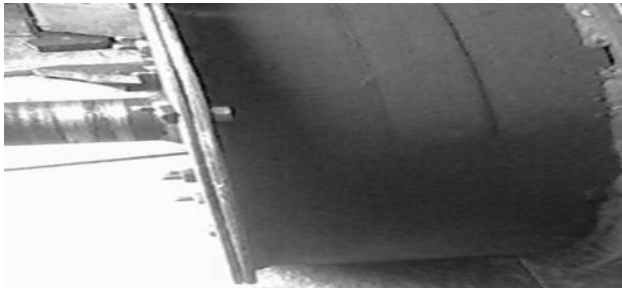


A black hole evolved from centripetal rotation

For a long time, China's ancient Taiji diagram has revealed all kinds of mysteries of nature with its simple and mysterious structural diagram. But up to now, the comprehensive analysis of China's ancient Taiji diagram is far from exhausted. Then why is it called gossip? The ancients believed that the most basic element of the Yi Gua system was the concept of Yin and Yang, and the concept of Yin and Yang had two meanings, including the nature and state of Yin and Yang. If we ignore the state of Yin and Yang and only talk about their nature, we can use Yang Yao (-) and Yin Yao (-) to represent Yin and Yang. Overlapping the above-mentioned yin-yang hexagrams three times from bottom to top forms eight basic hexagrams, namely, "Gan, Kun, Zhen, Xun, Kan, Li, Gen and Hui", which are called eight classics hexagrams.

I think this setting is only used for divination. It is very likely to be inspired by eight groups of divination pieces in the south guide car [or structural enlightenment such as orange garlic heads]. See the eight divinatory symbols set on the disc below. When the arrow-like parts are erected, the divinatory symbols naturally drop from high to low to accelerate their movement, which

translates into centrifugal thrust, and the internal eccentric cavity is large. On the other side, the hexagram iron is an accelerated inertial force, which consumes a lot of energy when moving from bottom to top. Moreover, there is no supplement of the acting force. Naturally, it contracts to the center to bend and fall, and when it slows down, it gets the centripetal pulling force and makes the vortex accelerate. Moreover, the infinite or infinitesimal compass is surrounded by small hexagrams of iron to form an eccentric cavity system structure, and then the ball like the core is placed in the eccentric cavity, so that the weight of the ball is copied by the eccentric system structure like the long arm of the lever, and more downward pressure energy or force is generated, so that the machine rotates downward. For example, white blood cells thrown off the heart of a person are transformed into red blood cells by pushing and rubbing, and people have spirit. When hands, feet, ears and eyes move, more cells are copied and stored in the body, so that children can grow taller and grow up and evolve to have children. Therefore, the ancients called the theory of predicting the past, the present and the future the term of Taiji Bagua Yijing.



When I first created the elliptic diagram and formula for setting questions and solving problems, I studied everything such as seeds, cells and the earth according to the model structure and data of Eccentric Vortex Engine, and found that they all evolved in the same elliptic motion model. I used the drawn diagram and formula to set questions and solve problems, such as writing the contents of the doctor's book on the moon and writing articles on the origin of the universe, just like I used to do in the past, I could solve them in one go.

I feel that it meets the requirements of French scientist Laplace: we must regard the current state of the universe as the result of its previous state and the reason for its future development. Therefore, in order to make people understand physics better and use physics theory flexibly, although I am a primary school student, I started to learn and write theoretical articles on creating a unified field, and invited experts to create the physics of China Taiji dynamic field and make contributions to mankind. Because my primary school can't write the physical theory of system frame structure.

If we correctly understand Einstein's unified field theory, what is the unified field first? For example, the eight divinatory symbols, like the fish jump in the above machine, are hung on the same disk. When the disc stands at attention without any external force, various pendants make different forms of movement. And after the machine is accelerated by force, the parts inside the machine have more energy after living movement, and whoever is in this place is a unified field. Therefore, the place where mass is exchanged for energy or force, such as the living field structure of a planet, an atom, a plant seed, a cell, a country, and a person, is defined as a

[unified field] when setting questions and solving problems, which will also help people understand the next movement and description of the objects on the operating field, such as the evolution into greater inertia force, unifying gravity, electromagnetic force, strong force and weak force.

What is a unified field? Usually, an object that occupies or consumes a lot of energy when solving a problem, such as the rotation pole of the earth, the center of the atom, the central government of a country, or a

$$\left. \begin{array}{l} \text{max} \\ K_g \neq m \cdot a^2 \cdot t \\ \text{Min} \end{array} \right\}$$

living frame structure such as a person. Positioning it has unified [field] function. Only in this way can we know the position around it, such as the mass of the planet on the galaxy, the speed of its movement, the distance from the center of the galaxy, or what has happened to the planet in a certain position on the galaxy. Or problems such as the rich and the poor, you can make accurate mathematical calculations or explanations. It is also known that whoever has a large living mass is a unified field function in this place. It doesn't exist. It doesn't change. Therefore, the calculation time of an event begins at this time. [This time refers not only to the standard time of a quartz clock, but also to a wide range. If you do a project, or describe the process of the beginning and end of an event, or both macro and micro are collectively referred to as the length of time. If you seize the time to speed up the completion, if you shorten the time in the process of writing or speaking with references, it will form a shortened space], and with the disappearance of the spin of the event, the time will end at this time.

The unified field function refers to locating the objects around the system and has a unified role in the motion limit. And provide or inherit intelligent energy or force for the surrounding objects. But space does not disappear completely.

What is the theory of unified field? For example, when the planet moves fast on one side of the center of a galaxy, but slowly on the other side, it needs a new physical theory such as dynamic field to demonstrate complex things comprehensively, systematically, related and developed, such as moving in a unified field and emitting various random problems. It can also be demonstrated simply and quickly why there are problems such as acceleration or deceleration in motion on a certain field surface. Just like a frame structure house filled with steel bars, yellow sand, stones and cement, the architect designs a dining room, a bedroom, a cupboard, a bathroom and so on. The owner will not put the toilet paper basket in the bathroom in the dining room, nor will he put the bedroom bed in the dining room.

Therefore, the evolution and transformation of its events in the unified field, and the problem that more energy is copied out, and the methods adopted in the demonstration process also follow the unified field theory of the great physicist Einstein. And the significance of China's taiji diagram, therefore, it was named Theory of Unified Field. It is an unequal mathematical formula which is solved by unified field

theory, elliptic diagram and problem setting.

$$kg \neq m \cdot a^2 \cdot t \text{ The right } + Z \neq$$

It is also a name to remind people to pay attention to the problems that occur in the unified field when setting questions and solving problems, or to verify the problems themselves by the reduction to absurdity in the figure. For example, if all kinds of physical laws and formulas discovered by scientists such as Newton and Einstein at a specific time or event and the logarithm of the circle of Professor Wang Yiping are flexibly applied to the problems that randomly change in the unified field of setting solutions, we can analyze and solve complex problems more scientifically. Some new physical standards have also been revised and formulated. Mankind has entered the century of the new theory of dynamic field physics of system frame structure. It is not to completely deny the existing laws.

It is also because Einstein said on his deathbed that he was going to gnaw at the soil all his life, and he really couldn't figure out who unified the four forces. I believe someone will use wisdom to solve the problem.

China's Taiji culture and quantum mechanics theory, though both trying to solve the problem from the microscopic point of view, use different methods. One is to draw a Taiji diagram of Yin and Yang fish first, such as depicting the universe as having its origin from scratch, and the process of evolution and development is parity non-conservation. Let's discuss the microscopic motion of everything.

The theory of quantum mechanics, however, does not draw a picture of the process of the formation, movement and development of things first, and then uses forces such as centripetal force and centrifugal force to solve the problems that appear in randomness, which is well founded. Moreover, people who solve difficult problems can also find out whether the explained questions are all correct or not and understand them with readers.

And set the BIGBANG origin and parity conservation. Not as good as Zen, the sixth ancestor of Buddhism, There is no tree in the bodhi tree, and the bright mirror is not a table. There was nothing, so there was no dust. That is to say, judging from his four sentences, Hui Neng, the sixth ancestor, didn't set the event background. It is inevitable for ordinary people to understand it in a fog, and it seems to be the same result.

If the body of Shen Xiu, the founder of Northern Sect, like Master Huineng, is a bodhi tree, his heart is like a mirror platform. Always wipe, don't make dust. People of all levels can easily understand the meaning of the four sentences after reading them. Or a combination of the two is better understood.

Therefore, the progress of physics has led to a new philosophy to establish the framework of the system. New philosophical ideas, such as the law of conservation of energy discovered by Newton in a

specific experiment, or the theory of relativity discovered by Einstein or the formulas of superstring theory, quantum theory and mechanics or chemistry and mathematics of other physicists, can also be flexibly applied to different physical events by referring to the figures or formulas on various fields of the elliptic diagram, such as a certain physical event that will occur and develop continuously. It is also the new philosophy that improves the science and applicability of physics. It is a theory of system frame structure composed of unified field theory, elliptic diagram and formula. you can understand and grasp that meaning of all numbers and formulas on elliptic diagram. first, the quality indicate an object or weight, such as the specific gravity of steel 0888, or the hardness or yield point after conversion, all of which are regarded as quality. Energy means the original mass that it is copied by the force, and it also means that an object is copied in more quantities. It is only a copy and cannot be used instead of the force. It is known that planets of various masses spin and swirl into galaxies, which are like a drawing in space. If the planet is placed on the gravity field of the ellipse, it is known by inference that the planet moves from the bottom to the galaxy. When the acceleration of the applied force is fast, the inertia force is large, and the planet moving upward is less affected by gravity friction and other forces. Thrown out by centrifugal force to form retrogression and expand outside the galaxy.

If the forces transformed by various planets are small, when they move to the gravitational field of the spiral arm towards the galaxy, they move from bottom to top, and they are consumed by friction, the weight of their own objects and gravity. Moreover, the planet that moves upward moves to the spiral arm of the galaxy without external forces, for example, when the centripetal force field slows down the most, a density wave is formed. Moreover, the spin of the planet slows down, and the light transformed by pushing and squeezing friction darkens, which evolved into a cold weather during the ice age in winter. If the planet is placed on the expansion force field on the other side of the ellipse, it will be known that the planet is accelerating downward on the spiral hip of the galaxy, and the planet is transformed into the force of pushing and rubbing in the accelerated movement, which will turn the electron clusters over the planet into bright white when they are fired, and there will be a hot climate evolution from big spring to big summer. No universe originated in the Big Bang. It is also known that there is a big bang. It is impossible to destroy all the planets hundreds of millions of light-years away.

Different from the method of setting questions and solving problems in old physics, the results are different. It is known that the material basis of the primitive celestial body is pushed forward by what kind of force, such as strength, and its principle mechanism is to

transform new energy or force, and the celestial body evolves from simple and one-way complexity from low to high, step by step by force. It is also known who has a large mass or a proper method after the evolution of all things or celestial bodies in the universe by force, and who has a unified field function in this living place. There is no immutability. In time, they move in an orderly way, and their parity is conserved. Space develops in an irregular, uneven, irregular and asymmetric elliptical motion, and their parity is not conserved. Solve all the breakthrough problems of physical theories, such as cosmic celestial bodies, and it will be solved.

Now, the universe is expanded in a balanced way like an inflatable balloon, which has harmed Einstein's scientific thinking. If it is described by the mathematical formula of parity non-conservation of Professor Wang Yiping of China, it is quoted from Point Gauge Field and Relativistic Structure (Proceedings of the Eighth International Conference on Computational Methods in 2017):

$$\text{Have } W = (1 - \eta^2)Z W_0 \tag{1}$$

$$\text{Where: } (1 - \eta^2)z = (1 - \eta^2)z + (1 - \eta^2)z + (1 - \eta^2)0z = \{1/2, 1\} \{0 \sim 1\}; \tag{2}$$

$$(1 - \eta^2)Z = (1 - \eta^2)Z + Z \cdot (1 - \eta^2) - Z \cdot (1 - \eta^2)0Z = \{1/2, 1\} \{0 \sim 1\}; \tag{3}$$

$$(1 - \eta^2)0Z = (1 - \eta^2)Z + (1 - \eta^2) - Z = (1 - \eta^2) + Z \cdot (1 - \eta^2) - Z \tag{4}$$

With the simultaneous equation of formula (1), we can get:

$$(1 - \eta^2)Z = \{(0, 1/2, 1)(0, 1/2, 1)\} Z ; \tag{5}$$

According to the principle of  $(1 - \eta^2) + Z \neq (1 - \eta^2) - Z$ , why the formula (1) is equal is the irreducibility of energy. Under the condition of constant mass, the space changes after the mutation point, and the energy is asymmetric. Where: w Finally, prediction conditions;  $W_0$  initial condition;  $(1 - \eta^2)Z$  data, event change law;  $(1 - \eta^2) + Z$  data event convergence change;  $(1 - \eta^2)0Z$  data event mutation point or center point or limit point;  $(1 - \eta^2) - Z$  data event diffusion change;

Taiji is predicted by Yang Yao (-) and Yin Yao (-), which may also come from.

Each of the eight groups of divinatory symbols in Eccentric Scroll Engine also consists of one long piece and two short pieces. The two short fittings are called yin (-) at different positions in the disc, which are randomly converted into different angles by force, that is, each group of divinatory iron poles in the disc sequentially protrudes from the top and falls down at an accelerated speed, forming an eccentric cavity surrounded by the divinatory iron rings on one side and expanding on one side of the big shell. A working sphere is stored in this eccentric hole, and the weight of the

sphere is also the weight. It randomly rolls on the eccentric arm like a lever, and is copied with more downward force, just like the cambered surface in the middle part of the earth's crust, which is spun down by the centrifugal thrust of the earth's core. When the divinatory iron is rotated to the other side by the force and moves from bottom to top, a group of divinatory iron composed of three parts randomly performs their own division of labor and is converted into different bending angles. A part becomes a fulcrum, so that one end of the downward hexagram iron is pushed on the work ball, and this side of the machine is not allowed to retreat, so that the eccentric cavity surrounded by the hexagram iron ring becomes smaller, and the pushing force is increased, so that the work ball rolls on the side of the hanging iron with large eccentricity and presses down the big shell, which makes the machine spin faster. Just as when there are the most sunspots in the sun, its pushing friction makes the spherical surface of the sun randomly formed into a spherical shape by the force.

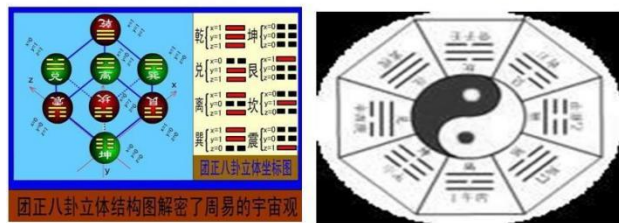
When the centrifugal force converted from the accelerated spin of the machine is particularly large. If the hanging iron moves to the side from bottom to top again, it is thrown out by the centrifugal force and does not fall, and it evolves into a round hole surrounded by the hexagram iron ring. Therefore, the weight of the work ball falls vertically and actually in the center direction, and the work ball loses its eccentric long lever arm, so it cannot be copied out with more downward force. When the machine does the deceleration limit in the process of uneven speed under the action of inertial force. When the centrifugal force is small, the weight of the hexagram iron is randomly converted into different angles, and the centripetal contraction, bending and falling work ball is pushed to the eccentric side, and more pressing force is copied on the lever arm, so that the machine is accelerated again. For example, the moving environment of the resultant force inside the atom is destroyed by accelerated rotation, and some gases and high temperatures have not only filled the holes inside the atom, but also been pushed by high-speed centrifugal force to escape from the small holes on the shell, which makes the atomic system cool down and depressurize, and the genetic energy provided is also greatly reduced. At this time, friction, gravity and so on unified the four kinds of forces, all of which could not do work, and the rotation slowed down. Because the atomic mass is assumed to be one kilogram, it is accelerated to 1000 revolutions in one minute, which has transformed into greater inertial force, and it is impossible to stop the atom as soon as it stops, which has won the readjustment of the internal force and the movement structure of the atom, and the time difference in space. In the period when subatomic atoms moving upward contract centripetally and do not move at a uniform speed, it appears that elements have different

periodicity.

Taiji diagram culture is actually a very scientific and practical encyclopedic reference book on everything, such as birth, illness and death, which is for educated scholars and experts to read and use physics flexibly. The yang (-) of Taiji is expressed as the amount or the male, and the yin (-) means to reproduce more energy. For example, a woman's uterus reproduces more energy, such as cells, and stores it in the fertilization base, so that the fetus grows up day by day. It is in line with scientific practice to establish a theory by combining such descriptions. See the figure below:

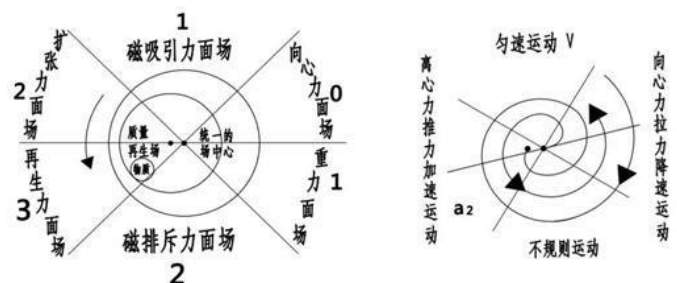


中国的太极八卦图图三、四表示什么意思呢？



What is the relationship between Taiji Bagua Diagram and Elliptic Diagram? They are all trying to show their microscopic movements and set up solutions to theoretical problems. However, the two pictures of Taiji Bagua can't let ordinary people directly decipher all things in the universe, such as the development trend of micro-movements, such as birth, aging, illness and death. See the following elliptic diagram, which is easy for beginners to understand and use, such as the arrow pointing and the enlightenment of words and numbers, to solve the microscopic motion of everything and to use

椭圆运动走势图 [见下图]



it flexibly when developing trends. It will not misunderstand only positive and negative expressions like yin and yang, and the result of hypothesis theory is **more correct**.

What is the relationship between extreme and Tai ji Yin-Yang diagram? When infinity is simply said as the form and result of the universe or events or things that have not yet been formally formed, it is only explained from its state of being in a state of obscurity. The Taiji Yin-Yang diagram, which is broader than the infinite, is that everything can solve their problems from scratch. Such as where the universe comes from, and how to move to transform new things and copy more energy. For example, how can the universe evolve from nothing when it was created?

First of all, these two pictures vividly reflect the mass of things moving on the dynamic field. [Quantity refers to a wide range, for example, the original object is genuine or its mass or composition, such as steel 0 888, means its quantity. Or the forces evolved in the accelerated motion, such as the gravitational force, are all within the scope of mass when designing the solution theory] and energy is copied by the force. Although several energies are copied, it is like copying more documents, but it cannot replace the original document, but it is only a copy] and it is not a force.

Where did these two pictures and figures come from? What's the role? For example, when diffuse gas diffuses in the air, turbulence occurs. As shown in the elliptic diagram, the gas in the magnetic attraction field accelerates from top to bottom to the expansion force field and the regenerative force field, transforming into inertia force, copying the mass into more regenerative energy or force, and making the gas cross the magnetic repulsion force field more quickly and impact upward to the gravity force field and the centripetal force field. On the contrary, it is subjected to the opposite pulling force in these two fields, which makes the gas gradually shrink and bend for elliptical deceleration. This elliptical motion is called centripetal motion in physics, so the centripetal acceleration vortex is obtained. For example, table tennis drops from a height of one meter, losing about twenty or thirty centimeters each time it bounces, but the height still exceeds the radius of the center of the circle of one meter by fifty centimeters. Therefore, the vortex surrounds into a black hole. When the accelerated vortex enters the hole of the black hole, the gas rolls bigger and bigger like a snowball, and aggregates and replicates into cyclone pellets, which are stored in the eccentric hole field of the black hole. [Formed the structure of outer shell, small inner ring cavity and nuclear cyclone pellet], that is, these two elliptical two-dimensional diagrams also evolved into the beginning of an atomic shell.

Also, due to problems such as geographical location and so on, the converted force is large, which

makes six kinds of force surface fields formed in the process of airflow vortex destruction, as shown in the figure. The outer airflow on each force field swirls fast from top to bottom, and is first surrounded into a large spherical mass. For example, white dwarfs later evolved. The inner airflow on the other side of the field is surrounded by a centripetal vortex from bottom to top, forming a spherical mass with less energy. If a dark planet is later evolved, it will occur in these six kinds of force surface places one after another and be evolved into planets with various masses. Just like the uneven force around the tree stem moves around from bottom to top, asymmetric branches and leaves grow. It is explosive like nuclear fusion, and the gas in those planets rushes out, and new planetary masses evolve around it. For example, a gas star such as Jupiter is transformed into a liquid star such as the sun by the force of fast rotation. Spin translates into a greater force of pushing and squeezing friction, which evolves into a solid star such as the earth's mass, and makes the universe evolve into an irregular galaxy, and then into an elliptical galaxy, which accelerates its movement and is copied into more forces. When rotating centripetally, it evolved into a spiral arm rotating centripetally. Thrown out by the accelerated vortex motion, the centrifugal spiral arm evolved into a rod-spiral galaxy. The length of the arm is the same as that of the lever, and more force is copied, which makes the universe expand and expand infinitely.

Moreover, the vortex surrounds the airflow entering the black hole cavity, which actually produces two kinds of fields. A centripetal force is the center, which refers to the role of positioning the surrounding objects and unifying them in the motion limit. A unified field is called the rotation pole of the earth. Or, just like the function of the central government, it has the function of unifying all forces and inheriting intelligent energy when there is a contradiction in the amount of energy copied by moving objects on the spot.

The other is pushed out by the centrifugal force of the system as the center, which is called the center of the regenerative field of replication energy. Or the tilted pole of the earth.

This eccentric small circle hole field is the turning point and mutation point of the positive and negative fields, indicating that it is the magical wisdom regeneration field of the combination of mass and space. The centripetal force is small, and the airflow entering the center and the subsequent small molecular dust are swirled into a ball. When the centripetal force is large, this field will be transformed into greater vortex suction and gravity. Therefore, the object that the vortex accelerates into the center of the cavity is thrown out by the centrifugal force of the system. That is, when it is transformed into greater inertial force in accelerated motion again and again, the small molecules moving



upward will not move along the elliptical circle with less consumption. When it is moved upward again and again by centrifugal force, it expands outward, and it evolves into an internal cavity field that moves in a circle. It is also the result of virus migration, such as water and small molecules entering the patient's skin, being copied by the eccentric cavity field of cells, or copying more energy.

The eccentric cavity field on this ellipse is a universal processing field, which is vividly used to copy more energy or transform more force and regenerate new things. (But when it is a two-dimensional drawing, it can only be copied one by one like the function of a copier. For example, the original quality of the document is unchanged, if there are no more words, there will be no less, and the original quantity cannot be changed by itself.). It takes force to move or transform a new mass. Or the on-site mass has evolved into a three-dimensional spherical field, such as a sealed container, which has the same function of transformation or replication. For example, water molecules entering the eccentric cavity of the spherical field are constantly pushed and rubbed to generate high temperature and high pressure, which are converted into gas and then converted into small molecules by high temperature and high pressure. They are copied into pellets by the vortex force of the system, and then are surrounded by a layer of eccentric cavity field by centrifugal rotation, just like tree rings. It has a unified standard of mass and space-time, such as the greater the vitality of the field, or the greater the eccentricity of the stadium structure by the centrifugal force of the system, or the tools and weapons with large mass and space-time, indicating that the more energy or force is copied.

On the contrary, every time a small field or an object is moved to the gravity surface field, the centripetal surface field and the center are decelerated, the force copied is less. The mass and space-time in the eccentric cavity field in the figure can also be regarded as new mass and space-time transformed by the system pushing friction. Every time the objects in the field are moved to a certain field force surface by centrifugal force, the greater the mass and space-time, the more the force is copied. When the mass and space-time are small or the centrifugal force is small, the less force is copied. Therefore, its movement is not only influenced by its surroundings, tools or weapons, but also restricted by its own quality. And it can't copy its own power to do work independently.

Today, 30 years later, scientific instruments have photographed the hole center of a black hole, and there is also a scene in which one makes a centripetal spin and the other makes a cyclone with a larger centrifugal spin. Prove the correctness of two centers in my elliptic graph. Because Newton does not move at two points or does not move at zero, he also has gravity. Ricky is a little

circular motion with gravity. It's all unscientific.

My "centripetal rotation" and "centrifugal rotation" belong to two or more mutually winding movements, so that more energy can be copied and things can be transformed or developed when they are thrown out by centrifugal force in an eccentric cavity. In English, convergence and diffusion are easily misled, for example, when a balloon is inflated or contracted at the same time, it is not true. Real gravity comes from the vortex suction or tension of a black hole, for example. Otherwise there would be no gravity in the universe.

The speeds of four kinds of motion on the elliptic diagram are uniform, accelerated, irregular and decelerated. It is a statement that the copied energy changes have taken place during the movement of a quantity. It is also expressed by different names on various occasions, just like the four images of gossip. It can also mean that in physics, gravity, electromagnetic force, strong force and weak force are transformed according to the magnitude of the force. Or that the earth revolves around the sun, transforming into spring, summer, autumn and winter, and making periodic climate changes in a unified way, are all expressions of purpose.

Six kinds of different force surface fields, magnetic attraction force surface field, expanding force surface field, regenerative force surface field, magnetic repulsion force surface field, gravity surface field and centripetal force surface field are set on the elliptic diagram. [Eight Diagrams call six kinds of doors, such as birth door, death door, etc.] is to remind people who set questions and solve problems, (which is also the principle of relative-relative comparison) with different mass and space-time force fields. Unlike every blade that makes a vortex, it is a dynamic field. It vividly shows that when things are moved, factors such as the magnitude of force, the length of time, or the quality of geographical conditions will change in the process of movement, such as babies, teenagers, youth, middle age and prime of life. Space in the six processes of old age. There are three kinds of space in each process, such as work, rest and illness, and how much energy or force is copied. Therefore, if the moving quantity is copied, the energy and the acting force are not conserved. When setting questions and solving problems, we must master these changing data and apply them flexibly to the problem of setting solutions theory in order to get correct results. Another unified field center and mass regeneration field center, just like designing two fish eyes called Yin and Yang on Taiji diagram, and the centripetal force and centrifugal force in physics, all have the same meaning. Moreover, I have designed all kinds of fields with large, medium and small quantities, which is consistent with the method and purpose of setting, solving and discussing difficult problems in the eight diagrams.

For example, when calculating that the maximum amount of an object on a regenerative force field is 3, after six kinds of accelerated motion on the field, the energy is copied to solve the problem. First of all, if the weight of the object is three, and the time after six games is three minutes, multiply by six to know that the copied force is 18, just like there are different numbers in the eight diagrams. You will multiply the result number and then check it, and you will know that it is like transforming into a material low level. If you multiply 18 times the unified field center again, as the capacity and quality of the central government is three, they will be copied to contribute 54, and if you multiply the quality regeneration field center again, it will be three, as the policy of the central government is good or bad, and the result will be 162 energy; Say 162 hexagrams with gossip. But its motion is a process of non-uniform motion. When setting questions and solving problems, we should randomly use addition and subtraction, etc.] I can set, solve and discuss complex problems in the micro-motion of everything by experts combining physics. The eight hexagrams and 64 hexagrams are not easy for ordinary people to operate, just like the interpretation of divination, heaven and earth and people.

Physicists in China can also divide the 162 hexagrams into three parts like the Eight Diagrams. One part of the Eight Diagrams has 64 hexagrams unchanged, the second part presupposes every process of the evolution of the universe from the 65 hexagrams, and the third part demonstrates the changes in the formation and movement of all things from the 100 hexagrams. For example, the element hydrogen in the atomic cycle is presupposed as one hexagram. We can analyze the problems of element mass and period length in the next cycle. If you solve the problem of life, death and illness, the preset divination is male. Let's talk about whether he is a teenager or an old man, whether he is working or sick. If you look up the preset figures, you can directly solve the problem accurately. Because the unified field theory is based on popular physical language, it is more scientific to improve the gossip of Zhouyi.

When this picture, like the sun, is accelerated downward by sunspots from the solar nucleus to the surface of the sun, so that the sunspot evolves into a sphere, the eccentric hole is lost. The sunspot moves from the bottom up, and then slows down and revolves around the center, evolving into a three-dimensional structure of an elliptical sphere, just like the three-dimensional painting of Taiji. Or the earth's crust, mantle and core, or Wang Dekui's expert three-spin theory model.

The yin and yang in Taiji diagram also refer to the fact that men are mass and women are reproducing more energy, or atoms and protons. Cause and effect. Or refers to a spiral arm of genes and galaxies that is centripetal force and a spiral arm that is made centrifugal force. It

can also refer to the positive and negative names of dark energy, such as centripetal force, centrifugal force, and dark matter, such as diffuse gas, which are summarized as yin and yang for short. Otherwise, there is no yin and yang or men and women in the universe at first. Everything in nature is expressed by centripetal force and centrifugal force, which are two simple motions with different pushing friction forces, so that more energy or force can be copied in the unified field, and then the laws of nature have evolved in the evolution and development of the universe, unifying problems such as gravity, electromagnetic force, strong force and weak force.

The large circle of an elliptical diagram indicates that the magnitude of its setting, solution and discussion is also like its own weight, such as the magnitude of its centripetal force. There are problems such as the speed of centripetal rotation.

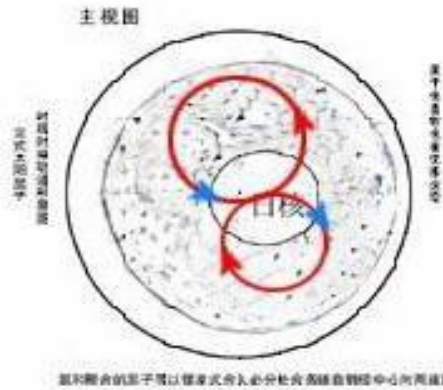
If the weight of the hanging iron is not increased during acceleration, the strengthened centrifugal force will make the hanging iron not shrink downward and bend downward, and it will be expanded outward to evolve. If you calculate when it evolved into a spherical hole. It is necessary to add at least 0.25 to the magnetic repulsion force surface field 2, 0.5 to the gravity force surface field 1, 0.75 to the centripetal force surface field 0, 0.5 to the magnetic attraction force surface field 1, 0.25 to the expansion force surface field 2. If the regenerative force surface field is not added, we will know that the reason why the hanging iron does not fall is that the machine is constantly made more force by the work system, which strengthens the centrifugal force, such as making the hexagrams iron bend and shrink away from the center, and it is pulled down again and again by the centrifugal force.

If you try to solve the problem with the Goldabar conjecture, you must calculate the new numbers evolved in various fields, such as elliptical diagrams, one by one, such as multiplication, on the basis of this evolved energy. Moreover, their calculation is very complicated. First, when it moves at a non-uniform speed, it is necessary to randomly track and calculate the six kinds of force fields, and after the movement, every new number will evolve, and if it needs to be added or subtracted, it is also necessary to know the original amount of work done. When it slows down to the slowest speed during the non-uniform speed, it is necessary to subtract the original weight of the whole system of the casing, and then multiply it by the original weight of the work ball. If the satellite enters the centripetal field of the galaxy and flies to the intended destination, if the original calculation formula is not adjusted, the satellite will deviate further and further from the intended destination. Because there is a vortex in the center of the star in this area, it transforms into a suction pull, which is the place of gravity. Therefore, it

is very complicated to solve the problem of Goldabar's conjecture. We must follow the step-by-step calculation process to solve the problem.

For example, the nucleus and several subatomic atoms, neutrons and quarks are pushed out by strong centrifugal force to form a group force, and they push one by one, just as the water in the sea is driven by the wind, forming a ripple of big waves, and pushing one wave after another is a more powerful wave effect. At this time, the nucleus, protons and subatomic atoms are pushed and rubbed at an accelerated speed, and the high temperature and high pressure are transformed into nuclear force. [Nuclear force refers to chemical force or the explosive force of nuclear fusion reaction in the nucleus, such as all protons, subatomics, neutrons and quarks, etc., which is linked by powerful high temperature and high pressure, or the shells of protons, subatomics, etc., are subjected to high temperature and high pressure explosive force, and one of them collides with another subatomic shell, etc., which strengthens the explosive force and causes a big explosion in the atom.

Therefore, clusters of objects and subatomic atoms in the exploded atomic holes are all scattered in the universe, which makes the universe evolve from nothing to atoms, and then to dark planets and red giant liquid spheres with larger quantities.

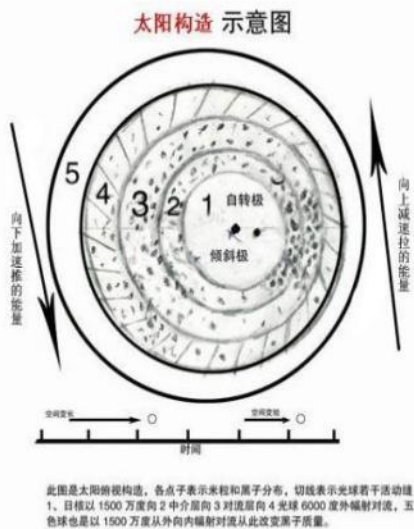


The schematic diagram of the original structure of the sun and the movement of sunspots is for reference only.

The above shows that the dark matter in the universe is the air, and the dark energy is the centripetal force and centrifugal force. Everything in nature is expressed by these two simple different pushing friction forces, namely centripetal rotation and centrifugal rotation, which has changed the old appearance that only gas moves in the universe. It also provides a model wisdom method for creating all kinds of new things, such as genetic reproduction and transforming new quality.

In addition, the ellipse chart sets the speeds of four kinds of movements, such as uniform movement, accelerated movement from top to bottom, irregular movement and deceleration from bottom to top. Then it is pushed by centripetal force or centrifugal force, which diverges and converts into the amount of friction on their respective sites. For example, the plate on the earth's ground is displaced and moved on the mantle plate, and the core is rotated and pushed by centrifugal force to rub against the inner wall of the mantle, and then combined with solar illumination. The hot airflow that heats the mantle escapes from the ground, forming a spring climate with the atmospheric circulation. When the core is accelerated by centrifugal force, it pushes and rubs to generate heat, which excites more electron clusters to transform into a summer hot climate. When the core moves irregularly, the pushing friction transforms into an irregular autumn climate. When the core moves slowly in the mantle, the heating force on the inner wall of the mantle is small, which is transformed into a unified winter cold climate change. Then there are different plants growing in different seasons, and when those plants evolve, there are multi-dimensional spaces such as birth and death.

In the Zhouyi survey, these four speeds are called four images, eight gates and sixty-four hexagrams to predict events and the future. At the same time, the calculation method revolves around the center



此图是太阳构造图，各点表示微粒和原子分布，切线表示光球若干活动圈。1、日核以1500万度向2中分质向3对流向4光球6000度外辐射对流，五色球也是以1500万度从外向内辐射对流从此改变原子质量。

counterclockwise from bottom to top, and then it is thrown out and spun centrifugally from top to bottom. Although they are different in description, their basic meaning is consistent with the purpose of expression.

Such as six inside tomatoes. There are five small cavity fields inside the melon. You can copy the number of seeds, and the centripetal force field is the death gate of gossip, and generally it will not be copied into good seeds, just as a human mother has given birth to several children, some sons or daughters are promoted to a higher position, and some children are unknown all their lives or even have no offspring.

Taiji Tao Te Ching points out that the movement of everything, such as chaotic crowds walking on traffic roads, should follow the traffic rules of red light stop, green light walk and walking up and down, which can greatly reduce the occurrence of traffic accidents. When some powerful or powerful people violate traffic rules and force their way through, resulting in traffic accidents or contradictions, there are rules to follow to deal with the problem. For example, traffic rules and other regulations, that is, the virtue of walking on the road, are the same, so it is convenient to set questions and solve problems. This is China's Taiji culture with profound connotation, practical operation and no side effects. If the usage is used to implement the standard, there is a problem. For example, the traffic regulations in China are fundamentally different from those in Japan. They drive on the left while the traffic regulations in China drive on the right. Moreover, after the law is formulated, it cannot be approached at any time. The word "virtue" involves a wide range, so it is scientific and civilized. If there are few contradictions in law enforcement, it will be done well.

The reason why the Taiji diagram of Zhouyi is a three-hexagram structure is also derived from everything. Such as seed husk, middle meat and inner core enlightenment. It is convenient for the ancients to predict and solve the problem of good and bad trends in the development of things, such as the three main conditions of heaven, earth and man, or the left, middle and right. The unified field theory, such as the size of the object, the force, the speed, the time and the geographical conditions, flexibly combined to solve the problem. According to the position of each person, the ancients also flexibly used Taiji diagram to develop their own cultural theory systems.

For example, Zhou Wenwang borrowed 64 hexagrams from the Book of Changes, and described the handling methods of 64 major events respectively. Six hexagrams will be used to tell the six main points or six stages of handling this matter. For example, Shi Gua talks about how to fight; "Litigation Gua" tells how to go to court; "Haigua" talks about how to protect wealth; Dui Gua tells how joy is safe; "Well Gua" tells how to meet the needs of the people; "Treading hexagrams" tells

how to deal with the ministers around you; "Lingua" talks about how to monitor the world; "Guagua" and "Guagua" talk about how to evaluate rebellion; Ben Gua talks about how to arm yourself; "Ge Gua" talks about how to revolutionize; "Family Gua" talks about how to manage your wife and children. As Master Li Mingzhong, who studies gossip in Guangdong, said, it is Zhou Wenwang's political theory of imperial power that creatively stresses the founding of the country and governing the world, and it is only a banner.

China Laozi put a downward arrow-like centripetal movement law in the Eight Diagrams, and founded the five elements of Yin, Yang, Gold, Wood, Water, Fire and Earth to evolve the Taoism in which everything moves to a philosophical height. The thought of inaction after entering the WTO emphasizes the unity of contradictions and the fusion of opposites.

Confucius took another Yang fish in the Taiji diagram as an arrow, founded Confucianism of benevolence, righteousness, propriety, wisdom and belief, and was born with the highest realm of moral cultivation of the golden mean. Of course, when governing the country and consolidating the situation of stability and unity, their culture also has imperfections. If you don't listen to Confucianism's principles of benevolence, righteousness, courtesy, wisdom and faith, Buddhism's killing, stealing, lewdness, madness and good and evil will eventually be rewarded. People who do not believe in the long-term interests of Taoism, such as gold, wood, water, fire and earth, and specialize in bad things. If the laws and regulations of the central government with high quality are designed according to the ellipse, they are only allowed to behave themselves and forbid them to talk nonsense, or they will be ruled by law. Or flexibly use Mao Zedong Thought's great wisdom culture to unify their thought and behavior.

For example, first distinguish between contradictions among the people or contradictions between ourselves and the enemy. Is it a religious contradiction or a national contradiction? Is it an economic contradiction or a personal interest contradiction? Different contradictions should be solved by different cultural methods. For example, religious contradictions should be solved by people who know religious culture first, and even local ethnic customs and habits should be respected. If there is an economic contradiction, people who know economic work should be used to solve the problem through consultation, so as not to turn contradictions among the people into contradictions between ourselves and the enemy. It has become a unified culture that treats both the symptoms and the root causes of Taiji. If the Taiji diagram of the voltmeter is explained clearly in physics, it will play a great role in science and technology.

It is also that the eight diagrams are not fully drawn, and only the hexagrams are set up to explain the

hexagrams and reveal the basic laws. Therefore, the unpredictable randomness in the development of a thing will also reduce the scientific nature of Taiji culture. They are not the people who invented the Eccentric Scroll Engine. If it is like an elliptical motion chart, it can make people see at a glance, and when we evolve the microscopic motion of everything, we should combine the conditions such as the speed, time and geographical location of the force to set questions and solve problems. Natural science may be advanced for 3000 years, and the explanation of quark free particles should not be won by Americans. Even this little discovery should not have a Nobel Prize.

Although, decades ago, Professor Wang Xiyu of China Academy of Sciences worked hard all his life and finally used Taiji to solve 162 difficult problems in nature, which was very insightful. But he didn't really understand the Yin-Yang diagram of Taiji, so he was too weak to be recommended for the Nobel Prize. At the same time, people all over the world have not fully studied, applied and developed China Taiji moral culture, and the world is not stable.

There will be different moral standards in different periods and countries, but China's Taiji culture reveals that everything should abide by the moral cultural standards of Tao in the simplest way, inspiring and persuading people to act according to the moral principles that are respected by Tao in social interaction, solving all the problems in nature, and pushing the friction along the centripetal force and centrifugal force to set questions and solve problems. If you are in power, you can handle it according to the 64 major events described by Zhou Wenwang. According to Laozi's Taoist thought of inaction in entering the WTO, the macro-analysis should emphasize the unity of contradictions and the integration of opposites. In dealing with ideological education, it is necessary to establish a systematic culture according to Confucianism founded by Confucius, such as benevolence, righteousness, propriety, wisdom and belief, and the good culture of Buddhism, such as killing, stealing, lewdness, madness and drinking, to cooperate with political and ideological education. It is more conducive to social stability, unity and self-reliance among the nations of the world. Therefore, China culture is a culture with systematic morality.

Throughout the history of human development and understanding of the universe, new theoretical viewpoints with their characteristics of the times have come out in each period. However, with the progress of social science and technology, these theoretical viewpoints have been replaced by epoch-making new understanding. However, in the history of human cognition, the only thing that lasts for a long time and with the development of modern science and technology, it is increasingly proved that its profound mystery

integrates truth, and only China's "Taiji" is applied to moral culture in the past, present and future.

Therefore, "Taiji" is by no means simply a science of divination and divination. In fact, it is a general knowledge and a general view of the universe that includes all fields of heaven, earth and people. The essence of "Taiji", that is, centripetal force, centrifugal force or the unity of opposites based on the number of fields of Yin and Yang in the universe and alternating transformation, is a universal theory.

For example, I use the unified field theory and the elliptic diagram to explain the origin and evolution of the universe, the study of earthquake evolution chemistry, the study of atomic evolution chemistry, why carbon dioxide is not the culprit of climate warming, why the ice age comes irregularly, the cause of the ring structure of cosmic microwave background radiation, the request to stop using radiotherapy and chemotherapy immediately to treat leukemia, cancer and AIDS, why genes can only copy energy, the theory of 'soul' and so on.

<http://www.sciencepub.net/academia/aa2012suppl>.

[In addition, I only wrote 162 kinds of data when I revised the paper on January 2, 2015. And Professor Wang Xiyu solved 162 difficult problems. I seem to be before 1968. I don't know where his basis came from. There can't be only 162 problems in the world.]

Today we should understand the white area of the Taiji chart as the formation of the universe from nothing. Like a human walking on two legs. One leg is long and the other is short. Take long legs and walk long circles. Or the diffuse air around the center to the end of the ball. Tai Chi refers to the white diving shape as Yin, which means to reproduce more energy. It's accelerated into a centrifugal spin, it throws the ball on the other side and accelerates up and down into a big outer ring, mass. Taiji figure black diving said Yang into quality. It is convenient to apply the solution theory problem in physics.

But later people may not be able to correctly understand the meaning of Yin and Yang.

So Taiji chart culture, in science and technology did not play a real role. It is an urgent task to fully unwrap taichi culture, and it cannot be replicated like Darwin's theory of evolution.

As I am very busy with scientific research and limited by my understanding and primary school culture, I do not know how to search for writing materials on the Internet to help me briefly describe the Tai Chi problem. I firmly believe that Chinese experts in various fields, such as systematic cosmology founded by Chinese Dean Luo Zhengda, and Zhou Juchuan, an old scientist in mainland China who is not afraid of hard work, just like Laozi and Confucius, founded Yin-yang tai chi physics, which is very systematic and in-depth. Anzheng Lujiang

County Zhang Xiang and other scientists, ahead of the future prediction, dynamic patterns will appear on a large scale in the human body.

These Chinese scientists are striving to build up the physics of the dynamic field of the system framework for the world in advance, opening up a beautiful and wonderful landscape, which will benefit human life in the future. The above content is for reference only, improper hope criticism and correction.

References:

Book of Changes and other materials [Wanjua n Publishing Company]. Wang Xiyu solved 162 difficult problems. Elliptic diagram in the comprehensive discussion of unified field theory on pages 5-6 of Science and Technology Information, No.18, 2007. The number ISBN7-436-39240-9 [Disappeared Technological Civilization] and the fact that I didn't read daoist magic's book written by Hong Kong people until the Spring Festival in 2007 30 years later increased my wisdom and strength. The truth of Zhouyi was written by teacher Li Mingzhong, a blogger. "Magic Morse Code and Ancient Divine Words" Zhao Yuwen and Wang Dekui's expert research paper. In 2012, the American natural science magazine "Taiji Hua Tian Xia" published novels and articles in the academic arena.

<http://www.sciencepub.net/academia/aa2012suppl>  
China Wang Yiping's description of mathematical formula is quoted from Point Gauge Field and Relativistic Structure. (Proceedings of the 8th International Conference on Computational Methods in 2017). And the login network abstract: cancer is the general name for a group of more than.

7/2/2023