

Economic Dispatch in Power System Networks Including Renewable Energy Resources using Various Optimization Techniques

Mustefa Jibril, Mesay Tadese, Nurye Hassen

Msc, School of Electrical & Computer Engineering, Dire Dawa Institute of Technology, Dire Dawa, Ethiopia
mustefa.jibril@ddu.edu.et

Abstract: Economic dispatch (ED) is an essential part of any power system network. ED is how to schedule the real power outputs from the available generators to get the minimum cost with satisfying all constraints of the network. Also it can be explained as allocating generation among the committed units with the most effective minimum way in accordance with all constraints of the system. There are many traditional methods for solving ED as the Newton-Raphson Method, Lambda-Iterative technique, Gaussian-Seidel Method, etc. All these traditional methods need the generators' incremental fuel cost curves to be increasing linearly. But practically the input-output characteristics of a generator are highly non-linear. This causes a challenging non-convex optimization problem. Recent techniques like genetic algorithms, artificial intelligence, dynamic programming and particle swarm optimization solve nonconvex optimization problems in a powerful way and obtain a rapid and near global optimum solution. In addition, renewable energy resources as wind and photovoltaic have been a promising option due to the environmental concerns as the fossil fuels reserves are being consumed and fuel price increases rapidly and emissions are getting higher. Therefore, the world tends to replace the old power stations into renewable ones or hybrid stations. In this paper, we attempt to enhance the operation of electrical power system networks via economic dispatch. An ED problem has been solved using various techniques as particle swarm optimization and a sine-cosine algorithm and the results have been compared. Moreover, case studies have been executed using a photovoltaic-based distributed generator with constant penetration level on the IEEE 14 bus system and results are observed. All the analyses have been made on MATLAB software.

[Mustefa Jibril, Mesay Tadese, Nurye Hassen. **Economic Dispatch in Power System Networks Including Renewable Energy Resources using Various Optimization Techniques.** *Rep Opinion* 2021;13(7):8-18]. ISSN 1553-9873 (print); ISSN 2375-7205 (online). <http://www.sciencepub.net/report.3>. doi:[10.7537/marsroj130721.03](https://doi.org/10.7537/marsroj130721.03).

Key words: Economic dispatch (ED), Particle swarm optimization (PSO), Sine-Cosine Algorithm (SCA), Photovoltaic (PV) and Institute of Electrical and Electronics Engineers (IEEE).

Introduction

Nowadays, the main aspect that concern engineers is the cost of services and products. Decreasing the operating cost is crucial in all power system networks. Economic dispatch is getting the optimal output of a number of power generation units, to serve the system load, at the most reduced conceivable cost.

Solving computational complexity of the dispatching optimization strategies in power systems was troublesome earlier. Besides, these conventional optimization techniques can't ensure the quality of the ultimate solution.

Practically the curves of generators' input-output are various and non-linear due to numerous fuel impacts, ramp-rate limits and confined zones of operation.

The complex ELD (economic load dispatch) problem [11,13,14] has to be solved by contemporary heuristic or probabilistic search optimization methods like DP (dynamic programming) as described in [2,6], GAs (genetic algorithms) as illustrated in [18], AI (artificial intelligence) [10] and PSO (particle swarm optimization) [1,3,4]. DP exhibits robustness, but

sometimes shows slow convergence near the optimum point. A GA is a probabilistic algorithm.

James Kennedy and Russell Eberhard introduce particle swarm optimization as in [5,24,7]. This technique fixes non-linear complex optimization problems. It was motivated by animal groups behavior like flocking of birds, schooling in fishes, etc. It operates without demanding information on the slope of objective or error function and it smoothly determines the best independent solution. The PSO method proposes a high-quality solution in a short time and displays rapid convergence.

In 2016, Mirjalili et al. initialised a further physics-based algorithm which is called sine-cosine algorithm (SCA) as described in [20,22]. The solutions in this algorithm update their positions to the most effective solution reached so far through sine-cosine mathematical functions. Conceptually, the SCA has few parameter settings and is easy to be implemented. On the other hand, the existing SCA has the disadvantage of a premature convergence problem and low optimization precision.

In this paper, the IEEE 14-bus system is considered. Economic scheduling of three generator

units is carried out using PSO and the SCA and the results are compared. All the analyses are performed in MATLAB software.

Two case studies are executed using PV-based DG (distributed generator) supply to show its effect on the cost at a specific bus then at each bus of the IEEE 14 bus system using PSO the technique.

Sections in this paper are divided as follows: Section 2 illustrates the economic dispatch problem equations, Section 3 introduces the various techniques in our analyses, Section 4 discusses the results found, Section 5 shows the effect of penetration of PV DG supply and finally, section 6 determines the conclusions reached and the future work.

Problem Formulation

Power stations or power plants are the industrial facilities for the generation of electric power. The type of the power station is determined according to the type of energy source utilized to turn the generator which differs vastly. Most power plants all over the world burn fossil fuels as coal, natural gas and oil to generate electricity. While nowadays there's an increase in the usage of clean energy sources as nuclear power and renewables as wind, solar, hydroelectric and geothermal.

For example, the nuclear power plants operate at constant output levels. While at hydro-stations, storing energy is apparently free so the operating costs do not carry any meaning. Therefore, only the fuel burnt cost in fossil plants shares to the dispatching process. The generator's operational costs include fuel, labor and maintenance. Costs of supplies, labor and maintenance are excluded since these are a fixed proportion of incoming fuel cost. Then only the fuel cost has to be considered.

The thermal power plant input is expressed in Btu/h. Active power output can be expressed in MW. In fossil fuel plants the output power is increased sequentially at the inlet of a steam-turbine by opening the valves. When a valve is just open, the throttling losses become large and when it is fully opened, throttling losses become smaller.

The objective Economic Dispatch (ED) problem is to minimize the fuel cost level of a power system over some appropriate period, while satisfying various constraints.

2.1 Objective function

We can model the fuel cost curve as a quadratic function of active power as shown below,

$$F(G_i) = \alpha + \beta P_{G_i} + \gamma P_{G_i}^2 \text{ \$/hr}$$

Where: F is the fuel cost per hour, P_{G_i} is the active power output of an i^{th} generator, α , β and γ denote

constants of the generator in $\text{\$/hr}$, $\text{\$/hr.MW}$ and $\text{\$/hr.MW}^2$, respectively.

2.2 System constraints

In solving a constrained optimization problem, there are two types of constraints:

a) Equality constraints:

This constraint is the power balance equation which stated that total generation equals total demand load and transmission losses.

$$\sum_{i=1}^N P_G - P_D - P_L = 0$$

b) Inequality constraints:

The generator's kVA loading must not exceed a certain thermal limit. The thermal constraint restricts the maximum active power generation so that rise in temperature remains within limits.

$$P_{min} \leq P \leq P_{max}$$

Where: P_{min} is the minimum active power limit of each generator, P is the active power output of each generator and P_{max} is the maximum active power limit of each generator.

Optimization Techniques Used

3.1 Particle Swarm Optimization

In 1995, Kennedy and Eberhard initially developed the PSO algorithm as discussed in [8,12,16]. This method starts from two different thoughts. The primary thought is based on experiencing flocking habits of specific sorts of animals (as birds, ants and bees). The second one is associated with the study of evolutionary computation. This algorithm operates by looking for the search space for candidate solutions and evaluating them to some fitness function with respect to the associated criterion. Firstly, the PSO technique selects some candidate solutions randomly or can be set with prior knowledge. Then the position and velocity of each particle (candidate solutions) are evaluated against the fitness function. If the fitness function is not fulfilled, update the individual and social element with some update in the rule. Afterwards, update the position and velocity of the particles. This process is repeated iteratively until all the candidate solutions fulfill the fitness function and converge into a fixed position. It is significant to know that updating the position and velocity rule is essential in terms of the optimization capabilities of the PSO algorithm.

The particle swarm optimization technique has been used several times in optimization tasks including solving economic load dispatch for a power system network as described in [8,12,16]. This stochastic and iterative method tries to drive particles

and finally the swarm to obtain an optimal region then to obtain best point globally in the search space.

This method has greater flexibility in solving any constraint optimization problems, therefore it can be used to optimize a wide range of functions with multiple constraints.

This method is considered superior to other classical methods, as it does not need to solve complex mathematical formulas to find the best solution to the problem. Several modifications have been applied to increase the performance and efficiency of this method in recent years.

3.2 Sine Cosine Algorithm

The SCA is a population-based optimization technique. This technique starts with a random number of search agents as described in [17]. The optimization process is divided into two phases, namely exploration and exploitation. In the phase of exploration, the SCA combines all the random numbers of solutions in a set of solutions quickly with a higher rate of randomness so that it can find those

regions of search space where there is a higher probability to find the global solution. On the other hand, in the phase of exploitation, there are slow changes in the random solutions and low random variations compared to the exploration phase.

In the SCA, there are four main parameters, namely $e1$, $e2$, $e3$, and $e4$. The parameter $e1$ indicates the next position, which could be between the solution and the destination or even outside it. The parameter $e2$ decides the distance that the search agents have to cover in the direction of the solution. The parameter $e3$ helps to decide the weighting factor for the destination. Weighting factors greater than one indicate an increased emphasis on a destination and lower than one represent decreased emphasis. The parameter $e4$ equally switches between the sine and cosine components. Due to the involving property of switching between the sine and cosine functions, the algorithm is known as the SCA. The sine and the cosine functions have the tendency to reposition themselves around the global solution.

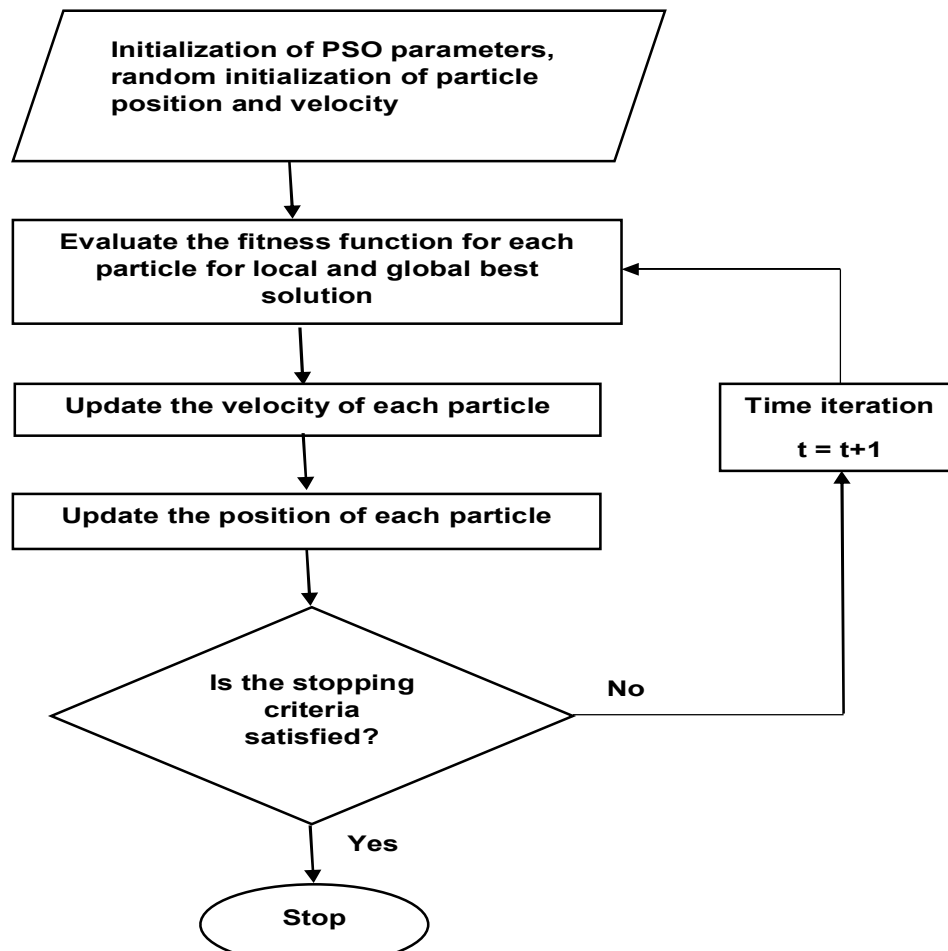


Fig. 1. Flow Chart Of PSO Algorithm

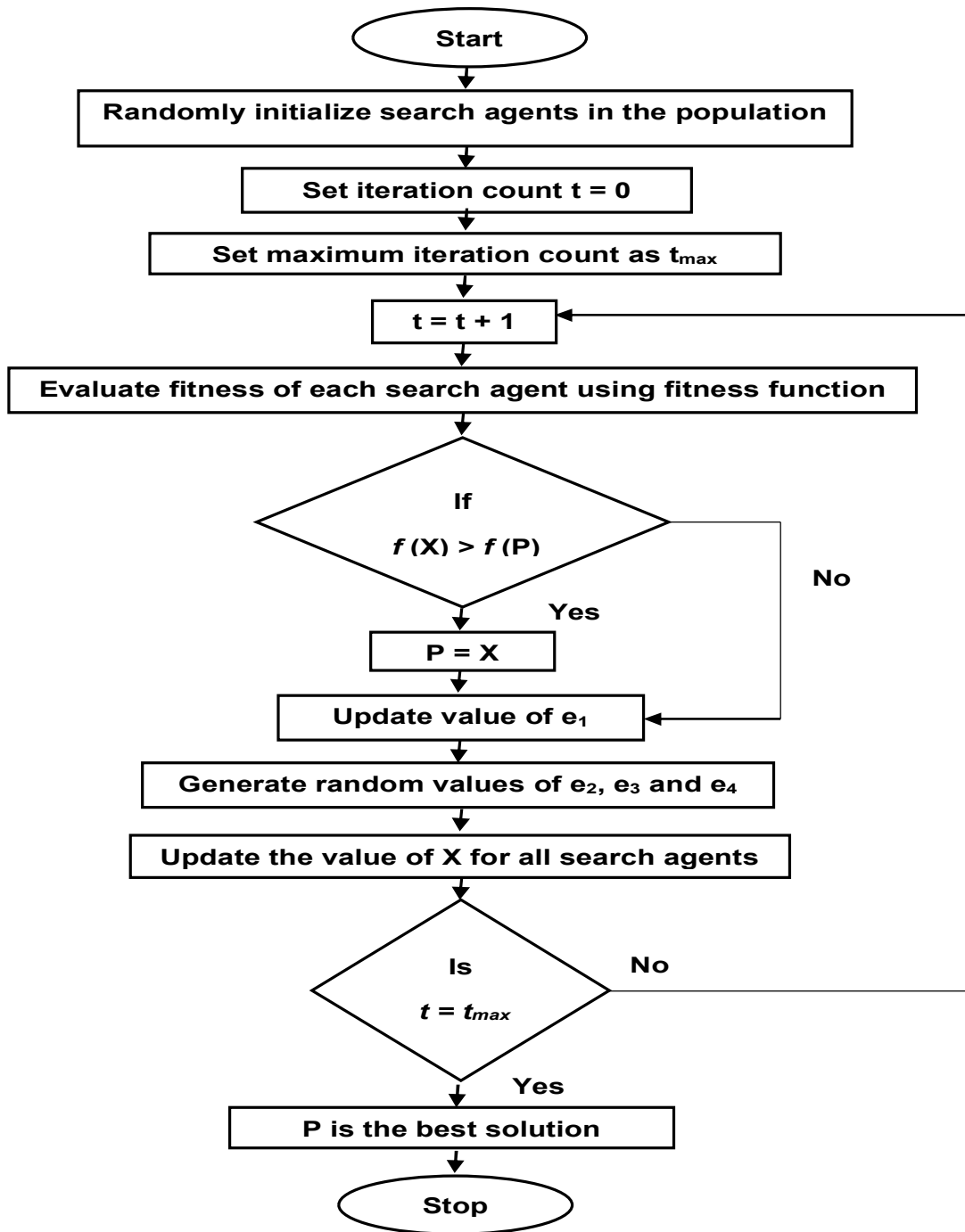


Fig. 2. Flow Chart Of SCA

Results

Economic dispatch using PSO and the SCA is implemented on MATLAB on 3 generators of the IEEE 14 bus system. This system has a minimum capacity of 50 MW and a maximum capacity of 330 MW. Several iterations were executed and the results are summarized in table 1 and 2 while the convergence characteristics of both algorithms are shown in Figures 3 and 4.

Table 1. Results Summary using PSO

Generator unit	G1	G2	G3
$P_{o/p}$ (MW)	155.82	65.03	47.05

Table 1 demonstrates the values of the output generation of each generator of the 3 generators to get the minimum possible cost using the PSO technique. Thus the generation units compensate the total demand for this system, which is **259 MW**, and the total active losses which equal **8.9 MW** for a sum of **267.9 MW**.

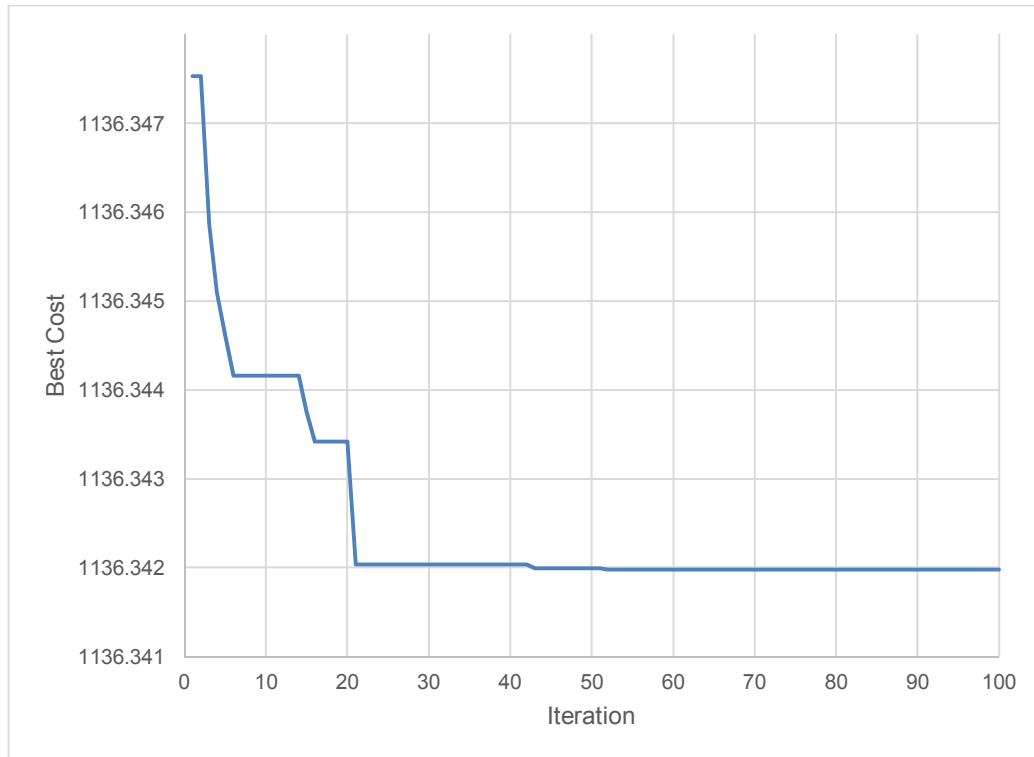


Fig. 3. Best cost versus number of iterations curve for PSO

By substituting in Equation (1) with these values we get:

Total cost of generation (Min. Cost)/hour = 1136.342 \$/hr

Total Cost (Min Cost)/day = 1136.342*24 = 27272.208 \$

While by using the SCA we get the following results:

Table 2. Results Summary using SCA

Generator unit	G1	G2	G3
$P_{o/p}$ (MW)	155.96	64.99	46.96

Here also Table 2 demonstrates the values of the output generation of each generator of the 3 generators to get the minimum possible cost using the SCA technique. The generation units compensate the total demand for this system, which is **259 MW**, and the total active losses which equal **8.91 MW** for a sum of **267.91 MW**.

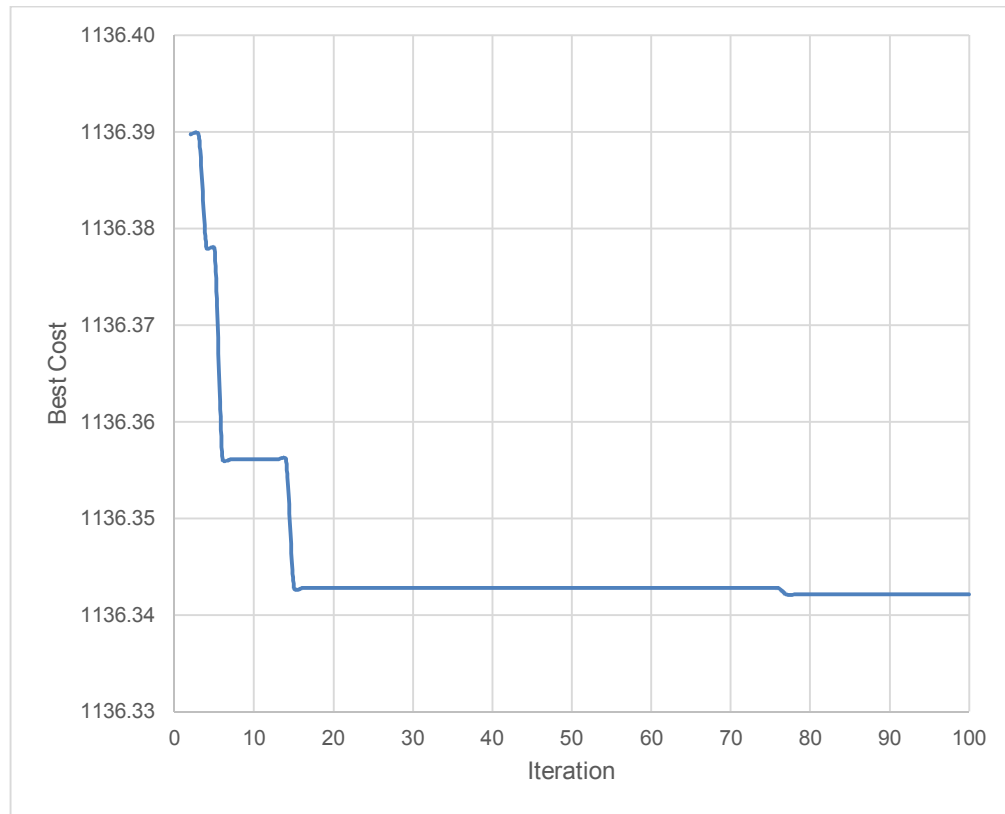


Fig. 4. Best cost versus number of iterations curve for SCA

Also, by substituting in Equation (1) with these values we get:

Total cost of generation (Min. Cost)/hour = 1136.3421 \$/hr

Total Cost (Min Cost)/day = 1136.3421*24 = 27272.2104 \$

Effect of Penetration of PV Based DG Supply

Electrical power generation is one amongst the most important sources of pollutant emissions. Burning of coal, fossil fuel and natural gas at power plants produces many pollutants such as carbon dioxide, sulfur dioxide and nitrogen oxide, etc. These gases can lead to many hazards as smog, and acid rain. Additionally, such emissions increase the danger of climate change. This problem can be limited by controlling pollution devices on fossil fuel plants and relying on the renewable energy resources as wind and PV.

Public awareness that regards the environmental issues is increasing and the usage of hybrid power systems including renewable sources as wind and PV is being obligatory in order to modify the generation techniques and to attenuate the emissions which pollute the atmosphere as in [9,15].

In this study, we will use solar irradiance per day on an hourly basis to see the effect of penetration of PV-based DG supply on the total cost and the economic dispatch problem.

The 24 h output of PV is calculated for various solar radiation at a specific location [15] and is listed as follows in Figure 5 then the averaged output power is calculated to get Figure 6.

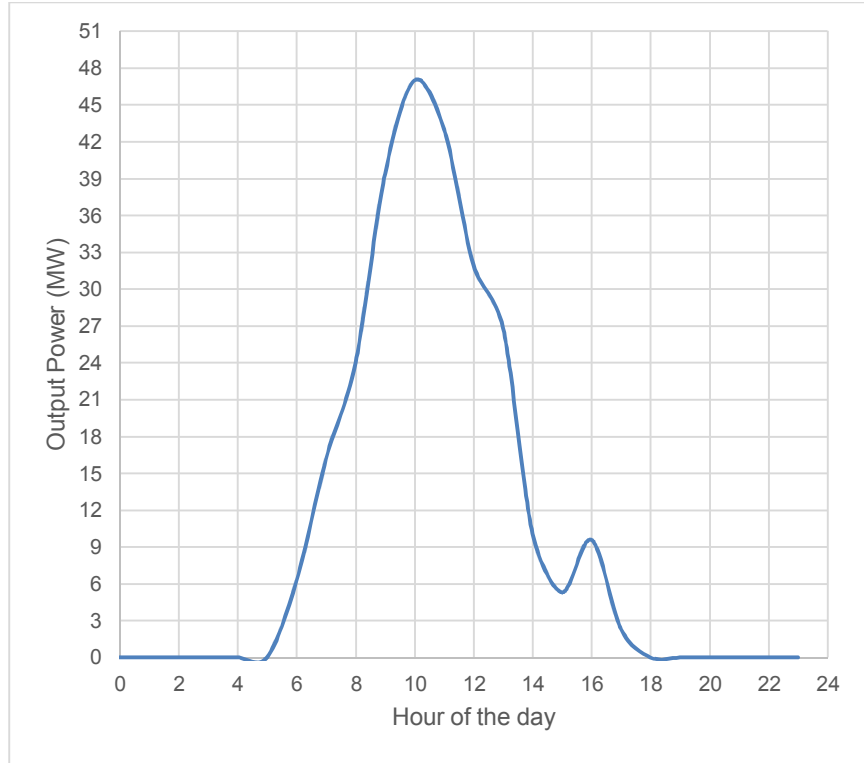


Fig. 5. Hourly basis of solar Output Power

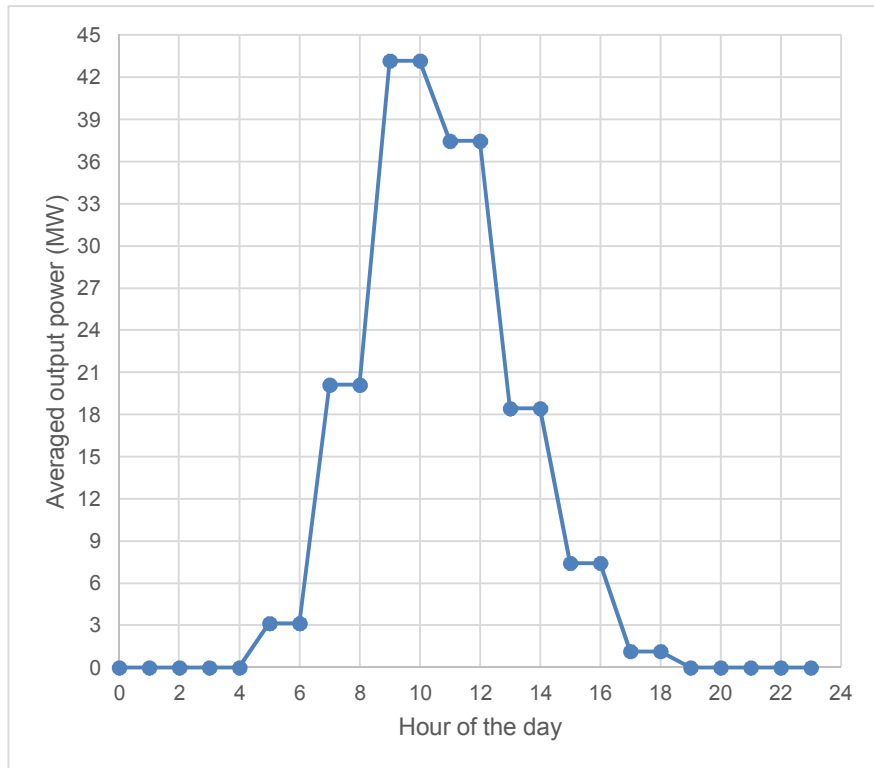


Fig. 6. Hourly basis of Averaged output power

i. Case study I

In this study we are going to allocate the PV DG at any bus and calculate the total cost at this bus to observe the effect of penetration of PV-based DG supply on the total cost per day on this bus.

This study is done on the IEEE 14 bus system using the PSO technique as in [19,21] on MATLAB software, and we will pick any random bus, for example, we are going to study the effect on bus 2.

Table 3. Results for costs and output power of each generator for a single bus

Hour per day	P1 (MW)	P2 (MW)	P3 (MW)	Cost/hr (\$/hr)
12-6 am	155.82	65.03	47.05	1136.34
6-8 am	154.82	63.84	46.1	1123.26
8-10 am	149.4	57.46	41	1053.42
10-12 pm	142.05	48.83	34.05	960.18
12-2 pm	143.87	50.97	35.77	983.10
2-4 pm	149.93	58.09	41.5	1060.25
4-6 pm	153.45	62.23	44.81	1105.51
6-8 pm	155.46	64.59	46.7	1131.54
8-12 am	155.82	65.03	47.05	1136.34
Total Cost/Day (\$/Day)				26197.93

Data of Table 3, are the optimal output power for each generator P1, P2, and P3 on an hourly basis of a day. It appears that the total cost per hour decreases at the time of using the output power from PV supply with the main generators while it increases again in the period from 8Pm to 6 am, which is the period without the sun.

Also, if we compare the two results of using PV and without PV, the total cost per day decreases, obviously, with a PV unit.

ii. Case study II

In this study we are going to calculate the total cost at each bus and observe the optimal bus to allocate the PV DG to get the minimum cost per day.

This study is done on the IEEE 14 bus system using the PSO technique as in [23] on MATLAB software.

Table 4. Results for costs and total cost at each bus

	12-6 am	6-8 am	8-10 am	10-12 pm	12-2 pm	2-4 pm	4-6 pm	6-8 pm	8-12 am	Total cost/day
Bus 1	1136.3	1123.7	1056.5	966.8	988.8	1063.1	1106.6	1131.7	1136.3	26237.9
Bus 2	1136.3	1123.3	1053.4	960.2	983.1	1060.2	1105.5	1131.5	1136.3	26197.9
Bus 3	1136.3	1122.6	1049.6	952.4	976.2	1056.7	1104.1	1131.3	1136.3	26149.2
Bus 4	1136.3	1122.6	1049.3	952.1	975.9	1056.5	1103.9	1131.3	1136.3	26146.6
Bus 5	1136.3	1122.7	1050.4	954.3	977.8	1057.4	1104.3	1131.3	1136.3	26160
Bus 6	1136.3	1122.7	1050.4	954.9	978.3	1057.5	1104.3	1131.3	1136.3	26162.4
Bus 7	1136.3	1122.6	1049.5	952.5	976.2	1056.6	1104.0	1131.3	1136.3	26148.6
Bus 8	1136.3	1122.6	1049.5	952.5	976.3	1056.6	1104.0	1131.3	1136.3	26148.8
Bus 9	1136.3	1122.6	1049.5	952.9	976.5	1056.7	1104.0	1131.3	1136.3	26150.4
Bus10	1136.3	1122.5	1049.5	953.7	977.1	1056.6	1103.9	1131.3	1136.3	26152.8
Bus11	1136.3	1122.6	1050.1	955.6	978.6	1057.2	1104.1	1131.3	1136.3	26162.5
Bus12	1136.3	1122.5	1050.4	958.0	980.3	1057.4	1104.0	1131.3	1136.3	26171.2
Bus13	1136.3	1122.5	1049.3	954.0	977.2	1056.4	1103.7	1131.2	1136.3	26151.9
Bus14	1136.3	1122.3	1048.5	953.5	976.5	1055.6	1103.3	1131.2	1136.3	26144.9

Now we can deduce that the optimal location for PV-base DG supply is bus 14 as it has the lowest cost. Also, the difference between a system with PV and without PV is obvious. Now, the total cost per day with PV is **26144.935\$** while without PV is **27272.208\$**.

Conclusions

In this paper, an optimal solution of the economic dispatch (ED) was proposed using the PSO algorithm and SCA. PSO showed high quality solution and stable convergence over the SCA. The total cost of generation in the case of the PSO technique appears to be less than the total cost in the case of the SCA technique. The plotted graph for the IEEE 14-bus system showed the convergence characteristics. PSO (particle swarm optimization) is superior in terms of reliable performance.

Also, we introduced a renewable energy resource, which is PV with a constant penetration level, and we observed the reduction in the total cost of generation. Then we tried to allocate this PV-based DG supply so we searched for its best place with respect to minimum cost and we have carried out several calculations using PSO on MATLAB and finally, we reached its best place.

Since the minimum cost is at bus 14, therefore with constant penetration level its best allocation is to be added at bus 14.

As part of further work, since we studied the effect of PV-based DG supply on the cost of the IEEE 14 bus system with constant penetration levels then this study can be extended to increase penetration levels and decreasing the emissions in addition to the cost.

Appendix A

Table A1. Generators Data of IEEE 14 bus system

Bus	Generator	Pmin (MW)	Pmax (MW)	α (\$/hr)	β (\$/MWhr)	γ (\$/MWhr ²)
1	G1	10	200	105	2.45	0.005
2	G2	20	80	44.1	3.51	0.005
3	G3	20	50	40.6	3.89	0.005

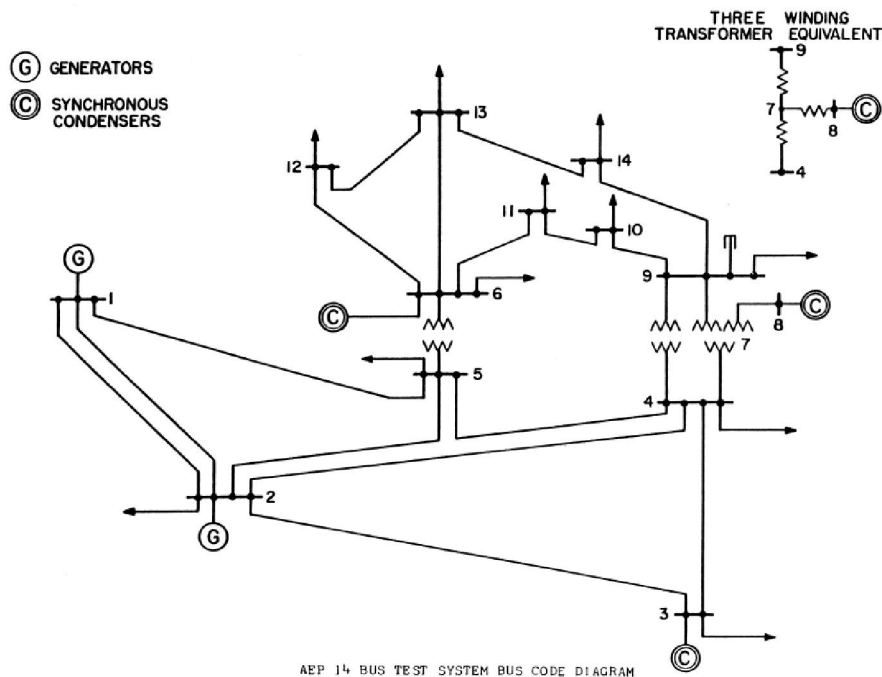


Fig. A1. Schematic Diagram For IEEE 14 Bus System

Table A2. Busses Data of IEEE 14 bus system

Bus	Generation		Load	
	P_G (MW)	Q_G (MVAR)	P_D (MW)	Q_D (MVAR)
1	0	0	0	0
2	40	0	21.7	12.7
3	0	0	94.2	19
4	0	0	47.8	-3.9
5	0	0	7.6	1.6
6	0	0	11.2	7.5
7	0	0	0	0
8	0	0	0	0
9	0	0	29.5	16.6
10	0	0	9	5.8
11	0	0	3.5	1.8
12	0	0	6.1	1.6
13	0	0	13.5	5.8
14	0	0	14.9	5

References

- [1] Zee-Lee Gaing, "Particle swarm optimization to solving the economic dispatch considering the generator limits," IEEE Trans. Power Syst., vol. 18, pp. 1187-1195, Aug.(2003).
- [2] Nidul Sinha, R. Chakrabarti, and P. K. Chattopadhyay, Evolutionary programming techniques for economic load dispatch, IEEE Transactions on evolutionary computation, vol. 7, issue 1, pp. 83-94, (2003).
- [3] D Jeyakumar, T Jayabarathi, T. Raghunathan, "Particle swarm optimization for various types of economic dispatch problems" *International Journal of Electrical Power Energy System*, vol. 36, pp. 42- 28(2006).
- [4] Leandro dos Santos Coelho and Chu-Sheng Lee, "Solving economic load dispatch problems in power system using chaotic and Gaussian particle swarm optimization approaches" Elsevier, *International Journal of Electrical Power & Energy Systems* (IJEPES), Vol. 30, Issue 5, pp. 297-307, June (2008).
- [5] Vishnu Prasad, Amita Mahor, and Saroj Rangnekar, "Economic dispatch using particle swarm optimization: A review," *Renewable and Sustainable Energy Reviews*, vol. 13, pp. 2134-2141(2009).
- [6] C. Kumar, T. Alwarsamy "Dynamic Economic Dispatch – A Review of Solution Methodologies" *European Journal of Scientific Research* ISSN 1450-216X, Vol.64, No.4, pp. 517-537,(2011).
- [7] Deep, K., and Bansal, J. C." Solving Economic Dispatch Problems with Valve-point Effects using Particle Swarm Optimization" *J. UCS*, vol. 18(13), pp.1842-1852(2012).
- [8] Timothy Ganesan, Pandian Vasant And Irraivan Elamvazuthy" *A hybrid PSO approach for solving non-convex optimization problems*" *Archives of Control Sciences* Volume 22(LVIII), (2012).
- [9] Jie Meng, Geng-yin Li and Shi-jun Cheng "Economic Dispatch for Power Generation System Incorporating Wind and Photovoltaic Power" *Applied Mechanics and Materials* Vol. 441, pp 263-267(2014).
- [10] Dr.C.Kumar, Dr.A.Anbarasan, Dr.M. Karpagam and Dr.T. Alwarsamy"Artificial Intelligent Techniques in Economic Power Dispatch Problems" *International Journal of Applied Engineering Research*.ISSN 0973-4562 Vol. 10, No. 9, pp. 23243-23254, (2015).
- [11] Zeinab G. Hassan, M. Ezzat, Almoataz Y. Abdelaziz, " Solving Unit Commitment and Economic Load Dispatch Problems Using Modern Optimization Algorithms", *International Journal of Engineering, Science and Technology* Vol. 9, No. 4, , pp. 10-19 (2017).

- [12] Quande, Q., Cheng, S., and Xianghua, C. "Solving non-convex/non-smooth economic load dispatch problems via an enhanced particle swarm optimization", *Applied Soft Computing*, vol.59(1), pp. 229-242 (2017).
- [13] Sanjoy, R. "The maximum likelihood optima for an economic load dispatch in presence of demand and generation variability", *Energy*, vol.147, pp. 915-923(2018).
- [14] Jagat Kishore Pattanaik , Mousumi Basu and Deba Prasad Dash" Dynamic economic dispatch: a comparative study for differential evolution, particle swarm optimization, evolutionary programming, genetic algorithm, and simulated annealing" Pattanaik et al. *Journal of Electrical Systems and Inf Technol* (2019)
- [15] Bishwajit Dey, Shyamal Krishna Roy, Biplab Bhattacharyya "Solving multi-objective economic emission dispatch of a renewable integrated microgrid using latest bio-inspired algorithms" *Engineering Science and Technology, an International Journal* 22, pp. 55–66 (2019).
- [16] Aissa [Benchabira](#), Mounir [Khat](#)." A hybrid method for the optimal reactive power dispatch and the control of voltages in an electrical energy network" *Archives of Electrical Engineering* vol.68(3), pp. 535-551, September (2019).
- [17] N. Patel and K. Bhattacharjee "A comparative study of economic load dispatch using sine cosine algorithm" *Scientia Iranica International journal of science and technology* vol.27(3), pp.1467-1480, (2020).
- [18] Tankut Yalcinoz, Halis Altun and Murat Uzam "Economic dispatch solution using a genetic algorithm based on arithmetic crossover" *IEEE Porto Power Tech Proceedings*, (2001).
- [19] Anurag Gupta and Himanshu Anand 'Analysis of scheduling of solar sharing for economic/environmental dispatch using PSO' *INDICON IEEE* (2015).
- [20] Hafez, A. I., Zawbaa, H. M., Emary, E., & Hassanien, A. E 'Sine cosine optimization algorithm for feature selection' *International Symposium on INnovations in Intelligent SysTems and Applications (INISTA)*, (2016).
- [21] Ajay Wadhawan, Preeti Verma, Sonia Grover and Himanshu Anand " Economic Environmental Dispatch with PV Generation Including Transmission Losses using PSO" [IEEE Power India International Conference \(PIICON\)](#), (2016).
- [22] Suid, M. H., Ahmad, M. A., Ismail, M. R. T. R., Ghazali, M. R., Irawan, A., & Tumari, M. Z., *An Improved Sine Cosine Algorithm for Solving Optimization Problems, IEEE Conference on Systems, Process and Control (ICSPC)*, (2018)
- [23] Jiajun LIU, Bo SONG and Ye LI "An Optimum Dispatching for Photovoltaic-thermal Mutual-Complementing Power Plant Based on The Improved Particle Swarm Knowledge Algorithm" [IEEE Conference on Industrial Electronics and Applications \(ICIEA\)](#), (2018)
- [24] Kennedy J. "Particle swarm optimization", *Encyclopedia in Machine Learning*, pp. 760–766, (2010).

7/21/2021