

Indonesia The Earthquake Prone Country & G.R. Irlapati's Geoscope

Gangadhara Rao Irlapati

H.NO.5-30-4/1, Saibabanagar, jeedimetla, Hyderabad, india-500055

Email: scientistgangadhar@gmail.com

Abstract: The capital of Indonesia, Jakarta, sits in a precarious position. It is not only situated atop the Pacific Ring of Fire, but also, a little less than half of the city is below sea level, putting it on soft soil that has the potential to liquefy if an earthquake of sufficient magnitude were to strike. But the complications do not end there. Its elevation also places Jakarta at risk for severe flooding. The 2004 Indian Ocean earthquake occurred on 26 December with the epicenter off the west coast of Sumatra, Indonesia. The undersea mega-thrust earthquake was caused when the Indian Plate was subducted by the Burma Plate and triggered a series of devastating tsunamis along the coasts of most landmasses bordering the Indian Ocean, killing 230,000 people in 14 countries, and submerging coastal communities with waves up to 30 meters (100 ft) high. Indonesia was the worst affected area, with most death toll estimates at around 170,000. It is the third-largest earthquake ever recorded on a seismograph. Geoscope is very useful to detect the earthquakes hence Geoscope establishments should be taken in order to capture the consequences just like earthquakes etc in the underground area of this zone. The details of the Geoscope are described below.

[Gangadhara Rao Irlapati. **Indonesia The Earthquake Prone Country & G.R. Irlapati's Geoscope.** *Rep Opinion* 2018;10(1s):19-24]. ISSN 1553-9873 (print); ISSN 2375-7205 (online). <http://www.sciencepub.net/report>. 4. doi:[10.7537/marsroj1001s18.04](https://doi.org/10.7537/marsroj1001s18.04).

Keywords: G.R. Irlapati's Geoscope, Earth Quakes, Local, Regional, Central Geoscope Centers: Simple, Homemade, Micro Geoscope Centers: Seismic luminescence studies, Electrogeopluse study etc.

1. Introduction:

Earth Quake is the perceptible shaking of surface of the earth, resulting from the sudden release of energy in the earth's crust that creates seismic waves. Earth Quakes can be violent enough to loss people around and destroy whole cities. "The seismicity or seismic activity of an area refers to the frequency, type and size of Earth Quake experienced over a period of time. Earth Quakes can also trigger mud slides, mass movements, sink holes, coastal erosion, lahar, mud flows, volcanic activities, landslides, tsunami, shaking and ground rupture, avalanches, fires, soil liquefaction, floods and human impacts, tidal forces etc., Indonesia, Turkey, Mexico, EL Salvador, Pakistan, Philippines, India, Nepal and many other countries are most Earth Quakes vulnerable countries in the world including the zone.

Many predictions has been developed for predicting the time and place in which Earth Quakes will occur. I have conducted many researches on the Earth Quakes and invented the Geoscope which can help to forecast the Earth Quakes and its secondary consequent hazards in advance.

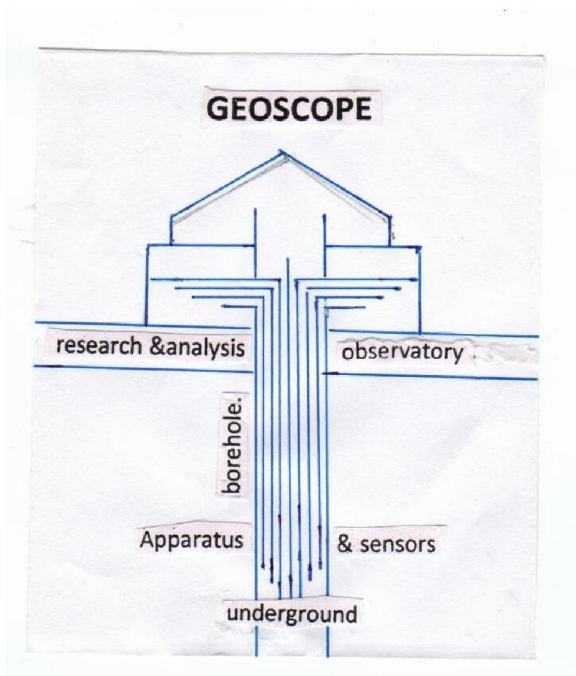
2. Construction:

Geoscope means- a mechanical architecture established in between the underground and observatory with the help of bore-well proposed for conducting geological studies to know the earthquakes, ores and water currents etc.

A borehole having suitable width and depth has to be dug in the zone. An observatory having research & analysis facilities has to be constructed on the borehole. Apparatus & sensors to recognize the geo-physical and geo-chemical changes generated in the underground such as foreshocks, chemical changes, electrogeopulses, micro-vibrations, pressure, geomagnetic forces etc should be inserted into the underground and linked with the concerned analysis sections of the observatory that is above the ground to study the changes taking place in the underground.

That means-relative results of geological & geographical researches & developments of past, present and future should be interposed, coordinated and constantly developed. The apparatus related to the geology and geography such as Richter scale etc also should be set in the observatories of the Geoscope. we can make many more modern ideas & modifications thus bringing many more improvements & developments in the Geoscope.

Many kinds of super high remote sensing technology in the area of sensor physics, signal processing used specially image processing, electromagnetic detection technology etc should be used in the Geoscope. Geophysical deep underground detectors and mineral exploration equipments, natural gas sensors etc should be used in the Geoscope. Electromagnetic sensors may also be used in the Geoscope project.



3. National Geoscope Project:

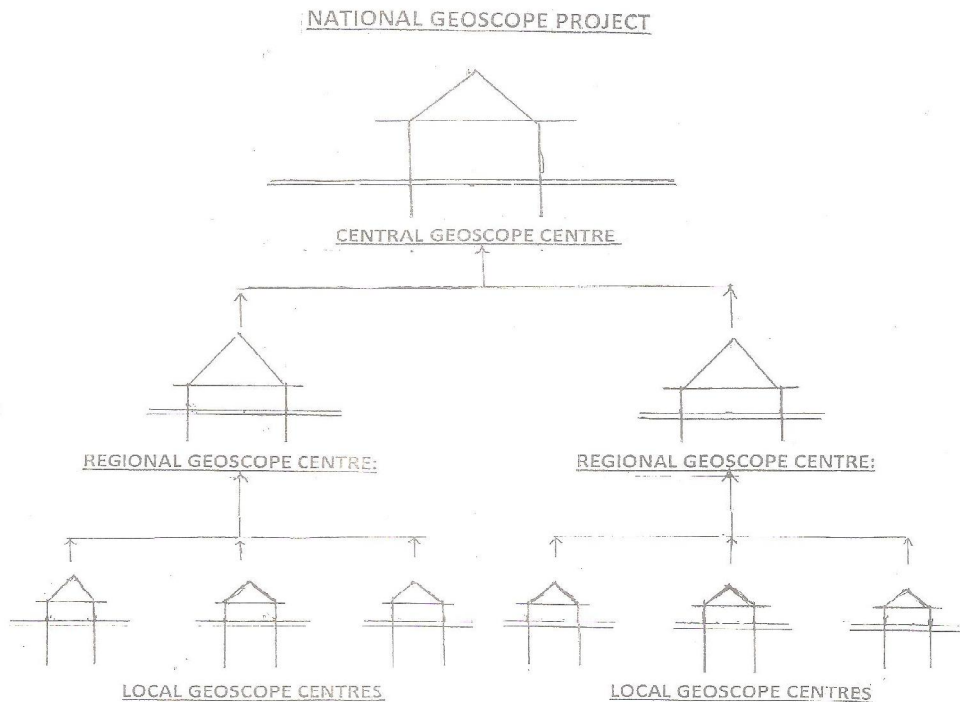
Many extensive researches are conducted on the process/method of establishment and implementation of the Geoscope forewarning system in the zone to detect the geological changes in advance is there should be established three level centers i.e., Local Geoscope Centre, Regional Geoscope Centre and Central Geoscope Centre in the zone for maintaining the system in a coordinated manner.

Local Geoscope Centre: One or more required number of Geoscopes should be established in the expected earthquake zones. The observation personnel in the respective Geoscopes should watch the onset of earthquakes day and night.

Regional Geoscope Centre: There should be established a Regional Geoscopic Centre at every expected quake zone to co-ordinate and codify the information supplied by the local geoscopic centers of the zone.

Central Geoscope Centre: There should be established a Central Geoscopic Centre to co-ordinate and codify the information supplied by the Regional Geoscopic Centers from all over zone/country in a coordinated manner.

Performance: Whenever a Local Geoscopic Centre that's in the zone sends warning about the onset of earthquakes, the observation personal should immediately send the information to its Regional Geoscopic Centre of the zone. The Regional Geoscopic Centre should analysis the information and send it to the Central Geoscopic Centre of the zone. The Central Geoscope Centre analyze the information supplied by the Local Geoscopic Centers, Regional Geoscopic Centers and estimates the epicenter, time, area to be affected urban places etc., details of the impending earthquake and send to the authorities and media of the country and warnings in advance to take precautions.



4. Types Of Geoscope Models

Many extensive researches are conducted on the process/method of structure and construction of the Geoscope forewarning system in the zone to detect the geological changes in advance is there should be constructed three three type of Geoscope models such as simple Geoscope Model, Home-Made Geoscope model and Micro-Geoscope Model in the zone for making studies on the Geoscope.

Simple Geoscope: This is a simple construction involving no expenditure. A deep well having suitable width and depth has to be dug in the zone. Construct a room over the well. Wash the inner walls of the room with white Lime. Fix an ordinary electric bulb in the room.

Home Made Geoscope: This construction involves no expenditure. Even students, children's and science enthusiasts of the zone can make the Home-Made Geoscope and detect the earth-quakes 24 to 28 hrs in advance. By making certain changes and alterations, the house having a well can be converted into a Geoscope i.e., wash the inner walls of the house with white Lime. Fix ordinary electric bulbs in the room.

Performance: Observe the colour of the room lighting daily. When the bulb glows, the light in room generally appears white in color, but before occurrence of an earth-quake, the room lighting turns blue in colour. The onset of earth-quake can be guessed by this "Seismic luminescence Emission".

Principle: Due to stress of continental plates and some other reasons on a place where there are favorable chances for earth-quake to occur, the pressure is induced in the underground. As a result, there is a steady rise in the pressure around the focus centre. Because of the large disparity in the magnitude of energies involved, gas anomalies such as (a) Helium emission (b) chemico-seismic anomalies of sulphur, calcium, nitrogen etc., chemical compounds (c) seismic atomic radiations of radioactive mineral compounds show up much earlier even at large distance of the zone from the epic-centre which enter the well through the underground springs. These gas anomalies occupy the room in this manner; emit radiation which gives blue colour (some times red) to the room.

Micro Geoscope: Micro-Geoscope is an elaborate construction. For this model a deep bore-well having suitable width and depth has to be dug in the zone. An observatory having the most modern high-technological research facilities has to be constructed on that well. Most modern mechanical systems like electronic, physical and chemical sensors and apparatus to recognize the rise and fall of the underground water levels, micro-vibrations and waves generated in the underground, differences in pressure,

temperature and other seismic activities should be inserted into the underground and linked with the concerned research analyzing departments of the observatory that is above the well to observe the seismic changes taking place in the underground of the zone. The results of researches on the quakes like Richter scale etc., also should be setup in the Geoscope. That means relative results of past, present and future pertaining to the earthquakes or seismic researches should be interposed, co-ordinate, and constantly developed. We can make many more changes thus bringing many more developments in the geoscope.

Observe the geophysical & geochemical changes such as foreshocks, chemical changes, ground water levels, strain in rocks, thermal anomalies, fractoluminescence's gas anomalies, electrogeopulses, micro-vibrations, pressure, geomagnetic forces, etc taking place in the underground. The onset of earthquakes can be guessed by observing the aforesaid changes in the concerned analyzing departments of the observatory.

5. Studies:

I have proposed much type of studies to study the earth's underground through the Geoscope by which we can predict the earthquakes 6 to 24 hours in advance.

Seismic Luminescence Studies:

This is a very easy and simple study in the Geoscope Project. Construct a room over a well having suitable width and depth of the zone. Wash the inner walls of the room with white lime. Fix an ordinary electric bulb in the room. (Otherwise by making certain changes and alternations any home or office having a well can be converted into the Geoscope. Wash the inner walls of the house with white lime. Fix an ordinary electric bulb but don't fix fluorescent lamp in the house. This method involves no expenditure).

Observe the colour of the lightning in the Geoscope room daily 24 hours 365 days. When the bulb glows, the lightning in the room generally appears as white (reddish). But before occurrence of an earth-quake, the room lightning turns violet in colour.

Because, before occurring of an earthquake-gas anomalies such as radon, helium, hydrogen and chemico-mineral evaporations such as sulphur, calcium, nitrogen and other fracto-luminescence radiations show up earlier even at large distances of the zone from the epicenter due to stress, disturbances, shock waves and fluctuations in the underground forces. These gas anomalies & fracto luminescence radiations and other chemical evaporations enter into the well through the underground springs. When these anomalies occupy the room above the well, the room

lighting turns violet in colour. The light in the room scattered in the presence of these gas anomalies, fracto-luminescence radiations and other chemicomineral evaporations the ultra violet radiation is emitted more and the room lighting turns in violet colour. Our eye catches these variations in the radiation of the lighting in the room easily since_

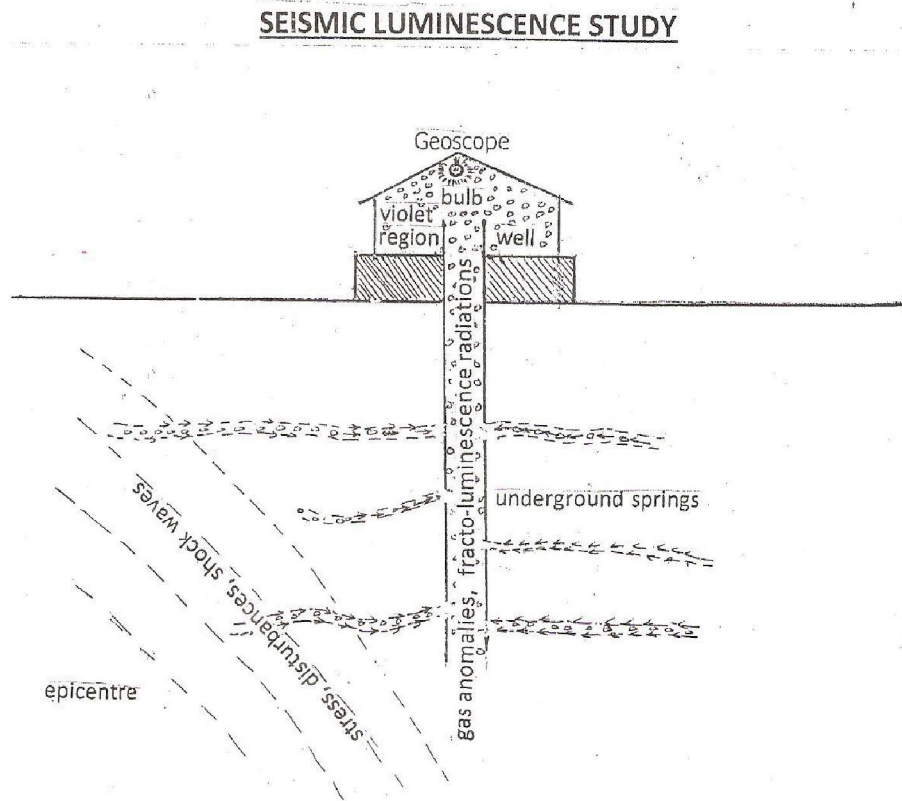
a) The violet rays having smaller wave length.

b) The violet radiation having property of extending greatly.

c) The light becoming weak in the violet region.

d) The eyes having greater sensitivity to violet radiation.

Due to all reasons the room may appear violet in colour then we can predict the impending earth quakes 12 hours in advance.

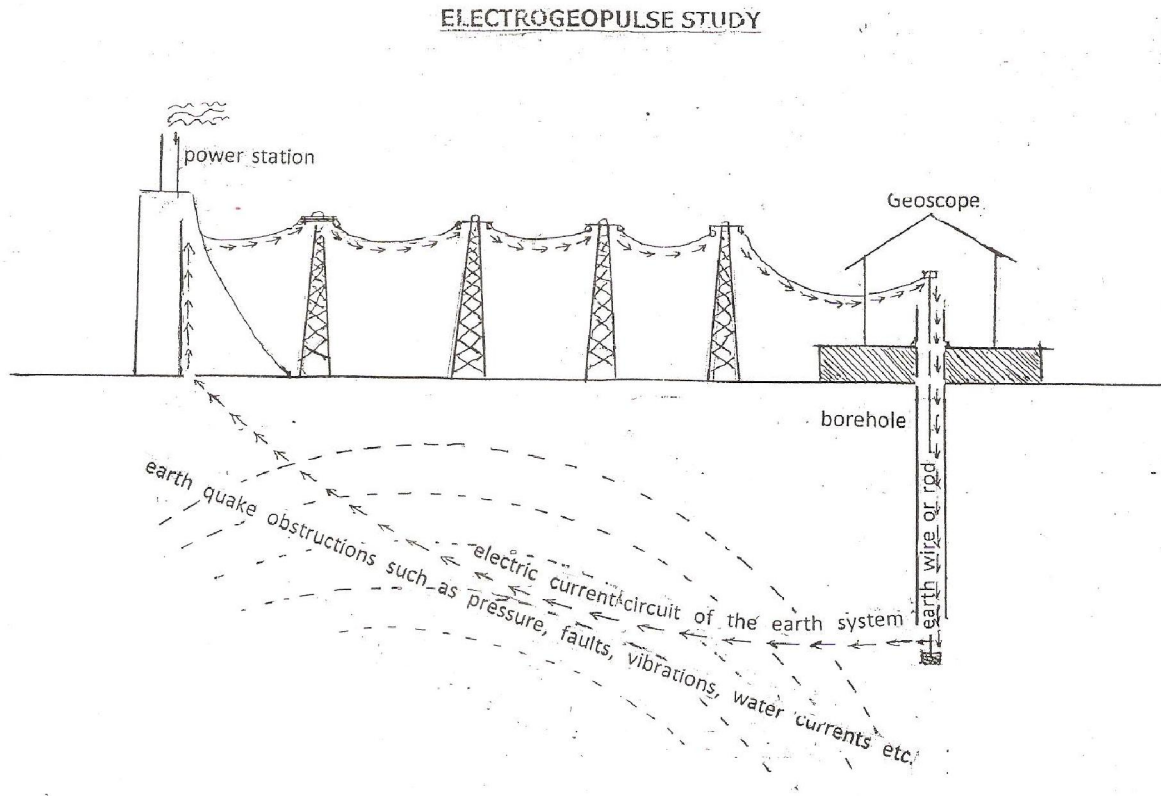


Electrogeopulse Studies:

This is also easy study to recognize the impending earth quake. A borehole having suitable width and depth has to be dug in the zone. An earth wire or rod should be inserted into the underground by the borehole and linked with the concerned analysis section having apparatus to detect, compare measure of the electric currents of the electric circuit of the earth systems. Otherwise by observing the home electric fans. etc. We can also study the electrogeopulses studies to predict the impending earth quake.

Observe the changes in the electric currents of the earth system 24 hours, 365 days. From a power

station, the electricity is distributed to the far-off places. Normally the circuit of the power supply being completed through the earth system. Whenever if the disturbances occurs in the layers of the earth's underground, the fluctuation rate will be more due to the earth quake obstructions such as pressure, faults, vibrations, water currents etc., of the earth's underground of the zone. So we can forecast the impending earth quake by observing the obstruction of electric currents of circuit of the earth system in the observatory of the Geoscope and also by the obstruction sounds in the electric fans etc.



6. Experiments Carriedout:

I have carried out a number of experiments on the Geoscope project and all were successfully proved out in practice. The risk of earthquakes in Andhra Pradesh is less but the source is greater in north India and other regions in the world where the establishment of the geoscope is very useful.

7. Uses: By setting up the Geoscope Project and maintain in the zone, the country can be predicted the impending earthquakes, volcanic hazards (and storm surges, tsunamis etc consequence secondary hazards due to the earthquakes occur in the womb that means underground of the sea or ocean if the country have the chances of occurring of these disasters) in advance. And also the country can be predicted mineral and underground resources by inserting many kinds of super high remote sensing technology in the area of sensor physics, signal processing used specially image processing, electromagnetic detection technology and geophysical deep underground detectors and mineral exploration equipments, natural gas sensors etc in the underground through the Geoscope. Setting up the Geoscope Project and maintain will also be useful in emerging industries such as geothermal and geo-sequestration etc.

8. Hazard Detection Method: And also we can find out many more secrets of the underground by keen study of the Geoscope.

For example, build Geoscope in the seismic zone areas can be predicted by virtue of performing studies as described above.

Another example, build Geoscope in the coastal areas of sea of the zone and earthquakes and its consequent secondary hazards such as tidal forces, rogue waves, tsunami can be predicted by virtue of performing studies as described above.

Furthermore example, build Geoscope in the possible zone areas where land slides are likely to occur and the earthquakes and its secondary consequent hazards such as land slides mud slides, mass movements, sink holes, coastal erosion, lahar, mud flows, etc can be estimated by virtue of performing studies as described above.

One more example, build Geoscope in the volcano areas and volcanic volcanic activities such as volcanic gases, steam generated eruptions, explosive eruption of high – silica lava, effusive eruption of low-silica lava, debris flow and carbon dioxide emission etc can be predicted by virtue of performing studies as described above.

These are some examples only. We can find out many more secrets of the zone of the country by keen study of the Geoscope.

9. Conclusion:

we can make many more researches on the geoscope thus bringing many more developments,

modifications and improvements in the geoscope of the zone.

The Figures are shown in the end of this issue.

References:

1. Aithabathula Jogeswara Venkata Buchi Maheswara Rao, Member of Parliament (Loksabha), Amalapuram letter dt:08/12/1987.
2. K.R. Narayanan, Minister of state, Science & Technology, Government of India, letter dt:09/12/1988.
3. G.S.Rao, MLA letter dt:1988.
4. N.T. Rama Rao, Chief Minister of Andhra Pradesh, letter dt:30/01/1989.
5. Order, Hon'ble High Court of Andhra Pradesh W.P. No.12355/1989, dt:06/09/1989.
6. Gangadhara Rao Irlapati. A Study On The Brazil'S Climate And Natural Disasters Brazil Monsoon Time Scale, Brazil National Geoscope Project Brazil Weather Time Scales Bioforecast & Irlapatism. *Academ Arena* 2017;9(12s): 1-32. (ISSN 1553-992X).
<http://www.sciencepub.net/academia>. 1.
doi:[10.7537/marsaaj0912s1701](https://doi.org/10.7537/marsaaj0912s1701).
7. Gangadhara Rao Irlapati. Monsoon Impact On People. *Academ Arena* 2018;10(1s): 7-12. (ISSN 1553-992X).
<http://www.sciencepub.net/academia>. 2.
doi:[10.7537/marsaaj1001s1802](https://doi.org/10.7537/marsaaj1001s1802).
8. Baidu. <http://www.baidu.com>. 2018.
9. Google. <http://www.google.com>. 2018.
10. Ma H, Cherg S. Nature of Life. *Life Science Journal* 2005;2(1):7-15.
11. Wikipedia. The free encyclopedia. <http://en.wikipedia.org>. 2018.
12. Marsland Press. <http://www.sciencepub.net>. 2018.
- 13.

(History: During the years of 1980-86, he has conducted many researches with an ideal to invent a device that should be used to predict the geological

hazards such as earthquakes and solve the mysteries such as mineral and water resources of the underground in advance. The Geoscope researches were completed in 1986 and the invention of Geoscope was presented to the Hon'ble A.J.V.B.M. Rao, Member of Parliament (L.S.), Amalapuram Constituency for consideration. After consideration in 1987, Sri A.J.V.B.M. Rao met the Hon'ble Minister of State for science and technology, New Delhi (later President of India) personally presented the Geoscope invention for further research and development in the services of welfare of the people. Sri K.R.Narayanan was issued orders to the C.S.I.R. in the capacity of Vice-President of Council of Scientific and Industrial Research to develop the invention Geoscope in 1988. In 1989, the Hon'ble High Court of Andhra Pradesh was also issued orders to the Government of India, Ministry of science & Technology, Council of Scientific and Industrial Research to provide research facilities to carryout the experiments on the Geoscope at National Geophysical Research Institute, Hyderabad for Implementation in the service of the country. He submitted many representations to the government and research Organizations for providing research facilities for further researches on the Geoscope but the government and research organizations did not encourage and provide research opportunities to him. He was envied by Research Institutes, scientists and subjected to incessant verbal insults. National and international magazines have published articles, comments, news items on the Geoscope. He sacrificed his life for the past 46 years in inventing the Geoscope to serve the world people from the earthquakes. But he is an unfortunate scientist who could not get recognition as the inventor of Geoscope. His home country did not recognize him. His appeal does not reach the international communities. He is now making his life's last journey due to pains and poverty & disregard and despair. Under the aforesaid circumstance he is making his appeal to the world scientists to recognize him as The First Inventor & Architect of Geoscope and Geoscopic researches.)

1/25/2018