

My understanding and application of Taiji Diagram

Author: Sun Chunwu

Sun Chunwu (1948 -), male (Han nationality), Yangzhou City, Jiangsu Province, China, mainly engaged in natural science research;

Author's statement: I guarantee that I am the copyright owner of this work,
Company name: Jiangsu Yangzhou Sanli Electric Appliance Group Co., Ltd
Postal code: 225,008 E-mail: yzscw0514@163.com WeChat [scw20,171,020](https://www.wechat.com/scw20171020)

Abstract: With the integration of China, I like to move the arrow of the dynamic field on the Taiji Diagram to the heart of one of the following movement rules, the creation of yin and yang, the movement of gold, wood, water, fire and the earth, so as to rise all the philosophical ideas of evolution. The WTO of Taoism's inaction emphasizes the unity and contradiction of opposites. Confucius is really another rumor of centrifugal movement, such as arrow, kindness, justice, etiquette, wisdom, and the birth of Confucianism, which promises the highest degree of ethical adaptation. Unfortunately, they usually analyze problems from a macro or micro perspective. There is no real understanding of the voltmeter picture of the Taiji Eight Diagrams, and there is no way to find the source below, nor to explain all the real meanings of the Taiji Eight Diagrams, which cannot play a huge role in science and technology.

[Sun Chunwu. **My understanding and application of Taiji Diagram.** *N Y Sci J* 2023;14(5):24-40].ISSN 1554-0200(print);ISSN2375-723X(online).<http://www.sciencepub.net/newyork>. 02.doi:[10.7537/marsnys160523.02](https://doi.org/10.7537/marsnys160523.02).

Key words: Taiji chart, elliptic trend chart. Substance; Mass energy; Force; Eccentric scroll engine; A planet; Galaxies; Centripetal rotation centrifugal rotation; Density wave

Chen Yiwen, a British Chinese consultant of the Chinese Academy of Sciences, wrote a letter to the Chinese Scientists Forum (August 2005), pointing out that many people are not yet sensitive to many fields of science and technology in the world, and are on the eve of a major scientific and technological revolution that is about to take place to achieve major scientific and technological innovation on the original basic theories. This great storm of scientific and technological revolution will benefit the first country in which it is first launched; Which universities can have enough sensitivity to this, and which universities can be prepared and benefit from it. On the contrary, which universities do not have any feelings about this, they may fall behind, and no one has ever believed them.

I hope my article can arouse experts and teachers' high attention. Because the 21st century is the century in which the Chinese people make the greatest contribution to the physical world. Like mushrooming for more than a century, I send a good message to the world, a work has begun to perfect the dynamic field of philosophy and physics, I just throw bricks and ask experts to introduce jade.

Why Chinese people have not won the Nobel Prize so far? In the United States, students should learn a new set of standards in science courses, such as: do not advocate learning Darwin's evolution, because his

theory can not be replicated in practice. And our Chinese educational circle even unique ancient Taiji chart, has a very grand philosophy, it set the explanation of all things especially convenient and applicable, but also knock on the door of the palace of modern science. A few people always think that because of the long time, it is urgent to really solve the diagram of Tai Chi and eight diagrams to serve modern science.

That Taiji figure on earth it is inspired by what, how to create? Does Taiji chart have those function? For what purpose was it created? Who wrote and what kind of book is Zhouyi?

Mr. Wang Xiyu believes that the Eight diagrams of the ancient Tai Chi Eight diagrams were produced in the Neolithic Age at least 6,000 years ago. They were drawn by Fuxi, the intellectual pioneer of all mankind and the ancestor of the Kaizong of the Chinese people. With the help of the information obtained from the high functions and the relics left by the last round of human ancient civilization -- river map and Luoshu, he looked up and looked down, like heaven, law and earth, got close to himself, and involved in things far away, thus sensing insight. He drew the innate ancient Tai Chi eight diagrams and passed them on to the present day, which has become a guide for modern human to

open the clouds and uncover the clouds and understand the universe.

Qian Quan believes that the Book of Changes is a collective work. Through the interpretation of successive philosophers, it has developed into a profound philosophical work. At the same time, it is also an ancient Chinese classic of natural science and social science. Ancient people used it to predict the future, make decisions on state affairs, and reflect current phenomena. On the day, under the earth, in the measurement of personnel. However, this is only a means that the ancients relied on before they mastered the scientific method, which is not the real science. Although some understanding is consistent with science because it happens to be scientifically valid, it cannot be said that it is scientific. It has to be a culture. According to Zhao Yuwen, the ancient United Nations began a virtuous cycle of "poverty alleviation by the rich and promotion by the poor" from around 7,000 B.C. to 3151 B.C. After 4,500 years of fire from Shennong, Huang Di, Yao Shunyu, Shang Tang Yi Yin, King Wen of Zhou, Duke of Zhou and Confucius, it lasted for 6,500 years. Finally, it was about 2,500 years later until the Qin and Han Dynasties that Tai Chi Taoist and virtuous classics were gathered and completed.

I also think their findings are valuable. But since ancient times, no one really understands the Taiji diagram and its origin, and there is no conclusive evidence to solve the mystery of Taiji Eight diagrams. Therefore, there is still no great progress in the exploration of the principle of easy learning, the theoretical research stops short, the ideology is confused, and the practical application tends to trend towards mysticism. The above imperfect understanding has seriously affected the academic status and scientific value of tai chi and hindered the healthy development of Chinese Yi learning. First of all, the origin and original meaning of the word "Zhouyi". As for the "Zhou" character in Zhouyi, there have been many sayings. For example, some people think that Zhou means "Yi Dao Zhou Pu has no preparations". Some people think: Zhouyi refers to the Zhou Dynasty. The Zhou Dynasty was accepted by the general public, and many people thought that the word "Zhou" in Zhouyi meant the period.

In the Simple Tao Te Ching, Zhou means "thoughtful and complete", and Yi means that no movement changes without fruit. I think the cycle is the cycle indicating the spin period of everything. If you know the spin period, it is meaningful to demonstrate the functions and changes of a living person. Now that you know why it can spin, it's easy to know whether it's past, present, or future without any changes in its motion. It is like knowing the natural law of the six periods in a person's life: breastfeeding in infancy,

learning in youth, working in middle age, and enjoying a successful and prosperous old age.

The following is a brief overview of Zhouyi to explain its origin. According to legend, the birthplace of Zhouyi is Anyang City, now a World Heritage site. Youli is 10 kilometers south of Anyang city. In the book of Qimen Dun Jia, Taiji may be founded by Hetu, Luoshu or Guoban burning deformed lines, etc. Those who make inventions know that these two things are not scientific, and a new theory cannot be invented without natural science practice, and the theory of eight diagrams cannot be established when Guoban burning deformed lines to create Taiji. In the book of Qimen Dun Jia, it is also said that the alien may have given the Yellow Emperor the Book of Heaven. Who is the alien? No theory can be invented out of thin air.

Therefore, I recently obtained data and found that when the Villacocha or Mayan people were probably mapping the terrain of China around 7000 years ago (this is a matter of historical record, available in the world journal ISBN7 1436 39240 149 [[lost technological civilization]], May have seen Fuxi on the yellow earth when he was fighting with Chiyou on the battlefield, the corpses were everywhere and the blood flowed in a river. But the righteous cannot win. He will use the south-pointing chariot. The vehicle was able to advance, or the Chiyou position was south, and the chariot headed south. The ancients gave the cart called the south-pointing cart) to Fuxi, pointing to break the powerful and fierce Chiyou in t

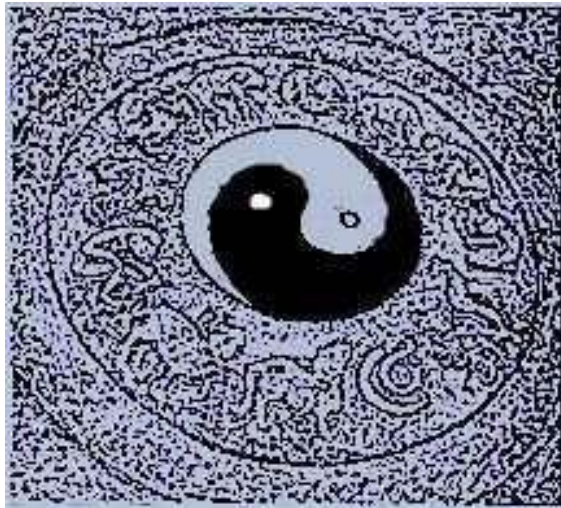
he south-pointing chariot, ending the long war. There may be a difference in time between them, or a difference in the year of the Yellow Emperor, which does not affect the car. Or Fuxi used the south-pointing chariot invented by the Yellow Emperor to win the war.

I think at least the Yellow Emperor, with his ministers, developed the tai chi culture of the ancient. When the war was over, he firmly pointed the south-pointing chariot. Eight groups of hexagram in the evolutionary phenomenon that everything in nature, such as society, begins with a single change. Therefore, Taiji yin-yang diagram and theory of dynamic field are established. In addition, various lines and data are designed for the manipulation of hexagrams, just as people use the abacus to calculate numbers, so as to predict the future, make decisions about state affairs and reflect current phenomena. The sky, the earth, the middle of the measurement of personnel and so on.

It is also possible that Lao Tzu had studied the universe and nature at first. For example, a seed also has two kinds of seeds. After sprouting a bud, it first grows and becomes a leaf, and another air flow that grows and becomes a leaf on the other side rotates upward, but fails to reach a symmetrical position, it grows another bud and becomes a leaf, and another bud

grows and becomes a leaf on the other side. And so it keeps reproducing more and more energy and at some point, the plant begins to flower and bear fruit. As the seed of the corn tree. When it is opened and found that there are a large and small two distinguished-on, there are also uneven state surface, a bit like diving, set two distinguished-yin and Yang.

Therefore, in view of the understanding and technological level at that time, using Yin and Yang fish to express, or the best expression. Also along the development of Taoism theory.



The Yin and Yang in the picture, in terms of today's physics, are centripetal and centrifugal forces, pushing and rubbing, heating, generating electricity and water molecules, being copied into more water and evolving everything. It is different from Laozi's Tao Te Ching: "Tao gives birth to one, life gives birth to two, two gives birth to three, and three gives birth to all things". Moreover, in the theory of uniform field, it is necessary to assume that, for example, the quantity of an object, the force of force, the velocity of force, and the conditions of time and environment are applied flexibly. In addition, the problem of natural law with more energy is reproduced after accelerated motion. The one whose mass is large is the unified field. There is no immutable physical model such as the canonical field.



Centripetal evolution of black holes

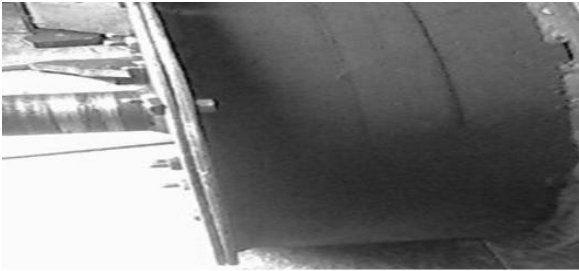
China's ancient Taiji Chart, with its simple and mysterious structure chart, has always revealed all the mysteries of nature. So far, the comprehensive analysis of Chinese ancient Taiji chart is far from exhausted. Then why gossip? The ancients believed that the basic element of Yi Gua system was the concept of Yin and Yang, which had two meanings including the nature and state of Yin and Yang. If we ignore the state of Yin and Yang and just talk about their properties, we can express Yin and Yang with Yang Yao (-) and Yin Yao (--). By overlapping the Yin and Yang lines three times from bottom to top, the eight trigrams are formed, namely the eight basic hexagrams of Gan, Kun, Zhen, Xun, Kan, Li, gen and Dui, which are called the Eight Scriptures.

I think this setup is just for the purpose of reading the hexagrams. With the south-pointing chariot and the eight sets of hexagrams, the south-pointing chariot is likely to induce the south-pointing chariot [or, for example, an orange and garlic]. See the eight hexagrams set on the disk below. When the arrowhead-like parts are erected, one side of the hexagrams naturally moves from high to low [for reference only, the real thing is slightly different]

When the falling motion is accelerated, the centrifugal thrust is transformed and the internal partial hole is large. The other side of the gua iron is accelerated inertial forces, from the bottom up when moving due to the consumption of energy. And there's no additional force. Natural contraction to the center for bending fall, do slow down to get centripetal tension, vortex acceleration around. And the infinitesimal or infinitesimal south-pointing cart uses

the small hexagrams to encircle the eccentric hole system and sets the ball like the earth's core in the south-pointing hole to be the eccentric system like the long arm of the lever

The system works like the long arm of a lever to push the weight of the ball, replicating more energy or force pushing down, causing the machine to turn downward. It is like the white blood cells thrown out by the human heart, which are greatly transformed into red blood cells by the action of pushing and rubbing. People have the spirit, hands, feet, ears and eyes to move, and to reproduce more cells to exist in the body, so that children continue to grow taller and grow up and develop and give birth to children. Therefore, the ancients will predict the past and present and the future of the theory called tai Chi Eight trigrams of the Yi Ching noun.



I think it is very likely to be inspired by the eight groups of divinatory pieces in the guide car [or the structure enlightenment such as oranges and garlic]. As shown in the figure below, when the eight arrow like parts mounted on the disc are erected, [For reference only, the actual objects are slightly different] one side of the divination piece naturally makes a prominent fall acceleration movement from high to low, resulting in a centrifugal spinning force. When the other side of the divination piece is accelerated by the inertial force from down to up, it consumes more energy and has no force supplement. The divination pieces tend to naturally shrink, bend and fall towards the center. When the speed is reduced, the centripetal force is obtained and they are surrounded by vortices. The divination pieces are all divination pieces on the disc. In addition, the infinitely large or infinitely small guide

car is also a good choice to use small divination pieces to form a system structure for doing work, which can self-reproduce energy or force. If people have hands, feet, ears and eyes, they can move. It is convenient to reproduce more energy, so that people can continue to evolve, grow up and mourn for old age. Therefore, it will predict the past, present and future culture, which is called Taiji Eight Diagrams.

For example, when I first created the figures and formulas for problem setting and solving, it was based on the model structure and data of the Eccentric Vortex Engine, and carefully considered and studied all things such as seeds, cells, the earth, etc., and found that they all evolved from the same elliptical motion model structure. And use the drawn diagrams and formulas to set and solve problems. For example, when writing the contents of the lunar doctor's book and the Taijihuatianxia popular science book, it is from space that only diffuse gas diffuses to write about the origin of the universe and the evolution of stars of various masses. And write the micro movement of their birth, aging, illness and death, and the problem of different things evolving on the planet. When I wrote the book, I was able to solve their problems at one go, just as I had done in the past. I felt that it met the requirements of French scientist Laplace: we must regard the current state of the universe as the result of its previous state and the reason for its future development. Therefore, in order to enable people to better understand physics and flexibly apply physical theories, although I was a primary school student, I began to learn to write theoretical articles on the creation of a unified field, and invited experts to create the physics of the framework structure of the Chinese Taiji dynamic field system, making contributions to mankind. Because I can't write the physical theory of system framework structure.

What is a unified field? For example, the mass of the eight hexagrams in the shape of fish leaps in the above machine is uniformly hung on the same disk. It is true that eight pendants are in different geographical positions. Without any external force, different forms of movement occur. And who has more energy after living body movement, and who is in this place is a unified field. Therefore, places where mass is exchanged for energy or force, such as planets, atoms, seeds of plants, a cell, a country, a person and other living things with dynamic field structure, are defined as [unified field] when setting up and solving problems, so that people can understand the next trend and description of object movement in the operating field, and understand that the mass of things in this field is also like weight. When accelerated motion replicates more energy and force, it transforms greater inertial force, unifying that gravity, electromagnetic force, strong force and weak force will not work if they are

transformed from pushing friction It is not surprising

$$\left. \begin{array}{l} \text{max} \\ K g \neq m \cdot a^2 \cdot t \\ \text{Min} \end{array} \right\}$$

that those parts like objects can not transform forces such as gravity when they slow down in inertial force.

What is a unified field? Usually, objects that occupy or consume more energy when setting and solving problems, such as the earth's rotating pole, the center of the atom, the central government of a country, or a person and other things with a living frame structure. It has a unified [field] function. In this way, we can know what changes have taken place in various positions around it, such as the mass, speed, distance from the center of the galaxy, or the position of the star in the galaxy. Or such as the rich and poor, we can make accurate mathematical calculations or explanations. We also know who has a large living mass and who is a unified field function in this place. Therefore, the time for calculating an event starts at this time. [This time is not only the standard time of the quartz clock, but also widely used. For example, you can do a project project, or describe the process of starting and ending an event, or both macro and micro are collectively referred to as the length of time, The time ended at this moment.

The unified field function refers to the positioning of the surrounding objects and the unified action in the limit of motion. And provide or inherit intellectual energy or force for the surrounding objects. But space does not disappear.

What is the unified field theory? For example, when demonstrating the problem that stars move fast on one side of the galaxy center, but slow on the other side, it is necessary to use the physical theory of the dynamic field of the system framework structure to demonstrate how complex things move on a unified field in a comprehensive, systematic, connected, and developmental perspective, and to diverge various random problems. It is also necessary to be able to demonstrate it simply and quickly, why it moves on a certain field force plane, and there are problems such as acceleration or deceleration. Just like the frame structure house poured with steel bar, yellow sand and cement by the architect, the dining room, bedroom, cabinet, room and toilet are designed in the house. The owner will not put the toilet paper basket in the dining room, nor will he put the bedroom bed in the dining room.

Therefore, take the evolutionary transformation of its events in the unified field, and the problem of more energy being copied, and the method used in the demonstration process It also follows Einstein's unified

field theory, a great physicist. And the significance of the Chinese Taiji Diagram. Therefore, it was named the Theory of the Unified Field. It consists of unified field theory, elliptic graph and mathematical formula of inequality

$$kg \neq m \cdot a^2 \cdot t \text{ The right } + Z \neq$$

The dynamic field theory of the system frame structure.

The problems reflected above, such as structural planets, plant seeds, animal cells, etc., in the most basic micro and macro movements, also include philosophical theories that improve the system framework structure, so that problems can be more scientifically divided and solved.

At the same time, physicists also found the crux of physics. However, all kinds of new theories are not standardized or even can not justify themselves. It is urgent to revise, supplement and improve the physics theory. Einstein said at the end of his life that the struggle was about to eat the soil, and it was really hard to understand who unified the four forces. I believe that someone will use wisdom to solve problems.

The Chinese Taiji Diagram, together with quantum mechanics and other theories, are intended to solve problems from a microscopic perspective In fact, the two methods are different. One is to draw the meaning of yin and yang fish in the Taiji Diagram first to set up the solution to the micro motion problem of everything For example, the depicted universe is a dynamic field process of evolution and development from scratch, and also depicts the non conservation of parity.

The theory of quantum mechanics, however, does not first describe the dynamics of the formation, movement and development of things. It first depicts a picture, and then unfolds the problems such as the formation, movement and development of atoms from the picture. Then it uses centripetal force, centrifugal force and other forces to set up and solve problems. In addition, people who solve problems can also find out whether the explained problems can justify themselves and be understood by readers. And they first set the origin of the Big Bang and parity conservation. There is also no new philosophy of establishing a systematic framework structure dynamic field, which is not as good as Huineng, the sixth ancestor of Buddhism.

Bodhi has no tree, and the mirror is not a platform. There is nothing in the world. Where can we get dust. That is to say, according to his four sentences, Huineng, the sixth ancestor, did not set the background of the event. It is hard for ordinary people to understand without knowing the same result.

If God Xiu, the founder of Beizong, is like Huineng's elder martial brother, his body is a Bodhi tree and his heart is like a mirror. Wipe it frequently to

avoid dust. People of all levels can easily understand the meaning of the four sentences after reading them. Or combine the two to better understand. Therefore, in order to solve the new problems found in the experiment, it is necessary to unify the existing physical theories correctly, establish a new dynamic field physics of the system frame structure, draw an elliptical three-dimensional diagram and design various figures To enable more people to master and flexibly apply to various problems in macro and micro motion of hypothesis theory.

Therefore, the progress of physics has led to the establishment of a new philosophy of system framework. New philosophical ideas, such as Newton's law of conservation of energy found in specific experiments, or Einstein's theory of relativity and other theories, can also be referred to the various figures on the elliptic graph and formula It can be flexibly applied to different physical events to solve hypothetical problems. We can scientifically explain the microscopic motion of a certain physical event that occurs and develops continuously That is to say, the new philosophy has improved the scientificity and correctness of physics. If the theory is named after everything or quantum, it may not be able to express the theoretical purpose of harmonious dynamic field physics like the Chinese Taiji Diagram.

It is based on unified field theory, elliptic graph and formula, and it is a systematic framework structural theory. When setting and solving problems, we should flexibly use the formulas of experts such as Newton, Einstein and others, such as relativity, superstring theory, quantum theory, mechanics or chemistry, mathematics, and so on, so as to produce a universal theory to set and solve problems.

If you can understand and master the meaning and flexible application of all the mathematics and formulas on the elliptic chart, according to the different problems in the development of problem solving, first of all, the mass represents an object such as weight or the specific gravity of steel 0888, and the transformed ones are collectively referred to as the mass. Energy means the original mass copied by the force is also the quantity of an object However, it cannot be used directly as force, just as a replica.

If a star revolves around a galaxy and is placed on the gravity field of the elliptical map, it can be seen that the star moves from the bottom to the galaxy. It can be seen that when the acceleration of the star is fast, the inertial force will be large, and the star moving upward will not be affected by gravity friction and other forces. It is expanded and expanded by centrifugal force.

If the spin of a star is subject to a small force and moves to the spiral arm of the galaxy, such as the gravity field, from down to up, it will be subject to friction, weight of its own object, gravity and other

energy consumption Moreover, the stars have no external force. The upward motion is to slow down in the inertial force and make a vortex around the center of the galaxy, forming a density wave when moving on the galaxy. In addition, the spinning speed of the star decreases, and the energy converted by the pushing friction force is less. When the star moves to the spiral arm of the galaxy, such as the centripetal force plane field The cold climate of the Ice Age in winter is evolved when the light is still dark due to pushing and friction.

Then put the star on the other side of the ellipse on the tension surface field, we can see that the star is accelerating from top to bottom on the spiral hip of the galaxy. The mass of the star, that is, the weight, is being accelerated, and more energy of pushing friction force, that is, the force, will be copied, just like the light from the electron clusters on the planet will be bright white, and the hot climate will be transformed from spring to summer. Or you can know what kind of force problem is when you solve the problem. If you use Newton's energy conservation, Einstein's theory of relativity, superstring theory, quantum theory and other theories, as well as mechanics or chemistry, mathematics and other formulas, you will be more profound and self fulfilling when you design and solve the problem. It can be used to deduce and solve the development trend and results of the micro movement of life, aging, disease and death in nature, such as all things.

It is different from the current methods of setting up and solving physics problems, and the actual results are also different. It also conforms to the description of the harmony theory of Taiji Diagram. It is known that the material basis of primitive celestial bodies is the forward pushing and friction movement by a kind of force, such as pneumatic force. Its principle mechanism is to transform new energy or force to reproduce more energy or force. Celestial bodies evolve from simple to complex, from low to high, step by step. All things or celestial bodies in the universe, whose quality is large or the method is appropriate, and who is a unified field in this living field There is no one size fits all. It is also parity conservation that they move in order in time Space is the disordered development of irregular, uneven and asymmetric elliptical motion, which is also the non conservation of parity. If we solve the physics theory, such as the problem of all breakthroughs in the universe and celestial bodies, we can solve it.

Now the universe, like an inflated balloon, is expanding the physical model in a balanced way, which harms Einstein's scientific thinking. If we use the parity nonconservation mathematical formula of Professor Wang Yiping of China, it is quoted from the Point State Gauge Field and the Structure of Relativity (Proceedings of the 8th International Conference on

Computing Methods, 2017):

yes

$$W = (1-\eta)Z W_0$$

(1)

$$\text{Including } (1-\eta)Z = (1-\eta)Z + Z + (1-\eta)Z - Z + (1-\eta)Z = \{1/2, 1\} \{0 \sim 1\};$$

(2)

$$(1-\eta)Z = (1-\eta)Z + Z \cdot (1-\eta)Z - Z \cdot (1-\eta)Z = \{1/2, 1\} \{0 \sim 1\};$$

(3)

$$(1-\eta)Z = (1-\eta)Z + Z + (1-\eta)Z - Z = (1-\eta)Z + Z \cdot (1-\eta)Z - Z \quad (4)$$

With formula (1), simultaneous equations can be obtained as follows:

$$(1-\eta)Z = \{(0, 1/2, 1)(0, 1/2, 1)\} Z; \quad (5)$$

According to the principle of universal non conservation $(1-\eta)Z + Z \neq (1-\eta)Z - Z$, but why formula (1) is equal? This is the asymmetry of energy. Under the condition of constant mass, the energy will change through the change of mutation point space. Where: W final and forecast conditions; W_0 initial conditions; $(1-\eta)Z$ Data and event change rules; $(1-\eta)Z + Z$ data event convergence change; $(1-\eta)Z$ The sudden change point, center point or limit point of $0Z$ data event; $(1-\eta)Z - Z$ data event diffusion change;

Taiji is also a possible source, which is represented by the positive line (-) and the negative line (-) in prediction

Each of the eight groups of divination pieces in Eccentric Engine also consists of one long and two short parts. Two short fittings, called Yin Yao (- -), are randomly transformed into different angles by the force at different positions in the disc, that is, each group of hexagrams in the disc protrudes from the top to the bottom in turn and accelerates to fall, forming an eccentric cavity surrounded by this hexagram iron ring. In this eccentric hole, a sphere is stored to do work. The mass of the sphere is also the weight. More downward force is reproduced on the eccentric arm like a lever. The shell of the machine is like the arc in the middle of the earth's crust, pressing down, which does work for the machine's spin. When this side of the machine is rotated to the other side by the force, the hexagram iron can no longer work when it moves upward. The hexagram iron composed of three parts is randomly turned upward into different bending angles, and it is bent toward the center and pressed down on the work ball to form the upward side of the machine. The eccentric hole surrounded by the hexagram iron ring is small, and the weight of the hexagram iron that shrinks and bends toward the center pushes the work ball to the larger side of the eccentric hole. Push the ball down with more force to accelerate the rotation. Just like when the sun has the most sunspots rotating at an

accelerated speed, it has a large pushing friction force, so that the sun's sphere is formed into a sphere by the force at random.

When the machine is accelerated and the centrifugal spinning force is particularly large. If the hanging iron moves to the side from bottom to top again, it is thrown out by the centrifugal force and does not fall down. It becomes a circular cavity surrounded by the hexagram iron ring. Therefore, the weight of the working ball in the eccentric cavity falls vertically and falls toward the center. The working ball loses its eccentricity, just as the lever arm cannot reproduce more downward force. The machine operates at a slow speed in the process of uneven speed under the action of inertial force. The weight of the hexagram iron overcomes the centrifugal force at random, and it is converted into different angles. It makes a centripetal contraction and bending, falls to the center, and the work ball moves to the side with greater eccentricity. Like a lever arm, it is copied with more downward force, so that the machine is accelerated again.

Just like when the resultant movement environment inside the atom is destroyed, for example, some gases and high temperatures have not only filled the holes inside the atom, but also been pushed to the edge of the atomic shell by high-speed centrifugal force. The gases and high temperatures escape from the small holes on the shell wall, which makes the atomic system cool and depressurize, and the genetic energy provided is also greatly reduced. At this time, friction, gravity, etc. unify the four forces, all of which can not work, and the rotation will reduce the speed.

Since the atomic mass is assumed to weigh one kilogram and is accelerated from one minute to 1000 revolutions, it has transformed into greater inertial force, which can not stop the atom at once, thus winning the time in space during the process of readjusting the force inside the atom, readjusting the motion structure and doing work. In the period of upward movement of subatoms, etc., and concentric contraction and non-uniform movement, different periodicities of elements appear.

Taiji Diagram Culture is actually a scientific and practical encyclopedic reference book on the theory of birth, aging, sickness and death of all things, and is for the educated scholars and experts to look at and use. For example, the yang line (-) of Taiji represents the quality or refers to the male, and the yin line (- -) represents the quality being reproduced with more energy during acceleration. It also means that women, such as the uterus, can make the fetus reproduce more cells - energy - in the system, [but not force] only grow up day by day, so it is scientific to describe how to combine to establish a theory. See the figure below:

What is the relationship between Taiji Eight Diagrams and Ellipses? All of them are designed to solve theoretical problems by showing their micro movements. However, the two diagrams of the Eight Diagrams of Taiji cannot let ordinary people decipher the trend of the development of micro movement of all things in the universe, such as life, old age, disease and death. See the following ellipse diagram. The section is easy for beginners to understand and apply the enlightenment of arrows, words and mathematics in the diagram to solve the problem of micro motion and development trend of all things.

This figure also shows the dynamic field physics of the system framework structure

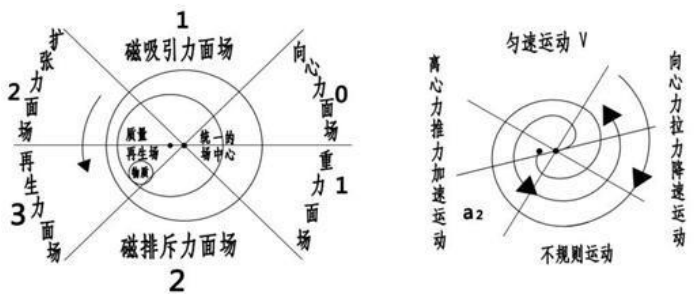
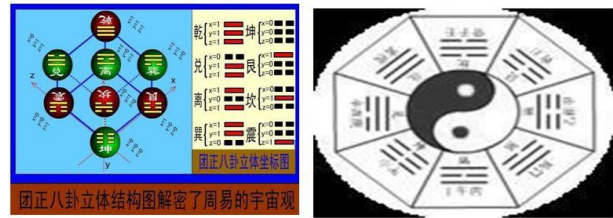
What is the relationship between Wuji and the Yin Yang Diagram of Taiji? When talking simply about the form and result of the universe or events and things that have not yet been formally formed, we can only explain it from the perspective that it is in a state of monopoly. The Yin Yang diagram of Taiji, which is more extensive than Wuji, is that everything from nothing to everything can be set to solve their problems. For example, where did the universe come from, and how did it move to transform new materials and reproduce more energy. The two fish like arrows in the Yin Yang diagram of Taiji are actually centripetal and centrifugal forces in physics. For example, how can there be the force of motion when the universe was created without anything, and all things have evolved?

First of all, these two pictures are really a visual reflection of the quality of things moving in the dynamic field, [Quantity refers to a wide range, such as the original object is authentic or the weight or component of the original object's mass. For example, the specific gravity of steel 0888 also represents its quantity. Or, in accelerated motion, the forces evolved, such as force, belong to the scope of mass in the solution theory, while energy is copied by the force. Although several energies are copied, they cannot replace the force, they are only copies.]

For example, when diffuse gas diffuses in the air, turbulence occurs. As shown in the ellipse, the gas on the magnetic attraction surface field moves from up to down on the expansion surface field and the regenerative force surface field. Because there is an accelerating centrifugal thrust on these two fields, they constantly reproduce more regenerative energy or inertial force from the mass in the acceleration inertia, which makes the gas more quickly cross the magnetic repulsion force surface field and impact upward toward the gravity surface field and the centripetal force surface field. On the contrary, the gas is subjected to the opposite tension of these two fields, so that the gas



中国的太极八卦图图三、四表示什么意思呢？



gradually increases its contraction and bending and makes elliptical deceleration movement. This elliptical motion is physically called centripetal motion, so the centripetal force accelerates the vortex around the center. For example, when a table tennis ball falls from a height of one meter, it loses about twenty or thirty centimeters each time it bounces, but the height still exceeds the radius of the center of a one meter high circle by fifty centimeters. As a result, the vortex has evolved into a black hole.

The gas accelerated into the hole of the black hole will be rolled larger and larger by the inertial force of the system, just like a snowball, and will be aggregated and copied into a cyclone pellet and stored on the eccentric hole field. [The structure of the shell, small inner ring holes, and nuclear cyclonic pellet system has been formed]. That is, the two elliptical two-dimensional figures are also the beginning of the formation of an atomic shell.

In the process of vortex breaking and circling, the magnitude of real force and other issues are discussed. Six force surface fields are formed in the process of vortex circulation. On each force surface field, the outer air flow whirls rapidly from top to bottom, and is first surrounded into a mass ball For example, white dwarfs evolved later. The inner air flow in the field is surrounded by a centripetal vortex from bottom to top, which is a ball with less energy If dark stars evolved later, they occurred in these six force surface sites and

were evolved into stars of various masses. It is just like that branches and leaves grow in the uneven upward circular motion around the tree stem. Nuclear fusion like explosive force occurs, and the gas in those stars rushes out, and various planetary masses evolve around them. For example, the evolution of gas stars into liquid stars and solid stars has evolved step by step, making the universe evolve from irregular galaxies to elliptical galaxies and rod spiral galaxies, making the universe continuously expand and expand.

Because the material is polymerized into a spherical shell, there are holes between the material and the material, so there are holes on the shell and holes inside. Cavities play three roles. On the one hand, they make the temperature and pressure inside and outside the shell cavity different. On the other hand, they are like a machine with processing ability. After being continuously accelerated by the system and surrounded by the centripetal vortex, the mass of the object is transformed by the force of the vortex movement. That is, this field system is called to transform the strength of gravity. [Like boys chasing girls. Girls like boys, so they can generate gravitation.] The air stream continues to accelerate to the center of the hole, swirling around, and then one by one air molecules are surrounded by a small elliptical hole field at the center by the force size.

That is, at the beginning of the black hole, it is a system that accelerates the vortex with a bell mouth and replicates more energy forces moving toward the center. For example, the airflow that will accelerate the vortex to enter the hole center of the black hole, and the small molecular dust that will be transformed later, are like snowballs, replicating new small cyclone clusters. Or by more and more force, first transform and then evolve a new planet.

In the eccentric hole of the small circle of the black hole, two kinds of fields are actually generated. A 'centripetal rotation' force is the center, which refers to the unified role of positioning the surrounding objects and in the motion limit. It is said that the unified field is like the rotation pole of the earth. Or just like the function of the central government, when there is a contradiction between the amount of energy copied from moving objects on the field, it unifies the forces and inherits the role of intelligent energy.

A center rotated by the centrifugal force of the system is called the center of the regenerative field of duplicate energy. Or like the tilt pole of the earth

The hole field of the small circle at the center is the turning point and mutation point of the positive and negative fields, indicating that it is the magic wisdom regeneration field of the combination of mass and space. The centripetal force is small, and the airflow entering the center and the subsequent small molecular dust are swirled into clusters. If the centripetal force is

large, this field will transform into greater eddy suction and gravity. Therefore, when the vortex accelerates into the center of the cavity, it will be thrown out and rotated by the centrifugal force of the system. It is also when the air flow is converted into greater inertial force by repeated acceleration, so that small molecules moving upward do not move along the elliptical circle with less force consumption. It expands outwards when it moves upward again and again by centrifugal force. It evolved into a circle. It is also the same as the coronavirus changes when more energy is copied.

Because of the conservation of energy. If the work ball loses eccentric holes in the eccentric field, no more energy can be reproduced, and the speed of the machine decreases, so does the centrifugal force. Therefore, the small molecules moving to the upper part of the spherical shell, and making use of the upper side of the shell to make a conic vortex like 8-shaped orbit to orbit, get centripetal force again. Accelerate the vortex to enter the hole at the center, and then get the acceleration to copy the diffuse gas mass into a cyclone pellet. When the system is pushed out of motion by the centrifugal force, which is also the inertial force, the hot gas flow from the same centripetal direction generates friction and electricity, Raw water molecules, etc. It evolves to all things according to this law. It is Laozi's Tao Te Ching: "Tao generates one, one generates two, two generates three, and three generates all things".

The eccentric hole field on this ellipse is a universal processing field, which is used to reproduce more energy or transform more force and regenerate new things. (However, it can only be copied into more copies of the original quality just like the function of the copier when it is a two-dimensional map. For example, the characters of the document are unchanged, and the original quality cannot be changed.). Both require force to move or transform into new mass.

Or on the spot, the mass evolves into a three-dimensional spherical field, such as a sealed container, which has the same function of transformation and replication. For example, water molecules entering the eccentric holes of the spherical field are constantly pushed, rubbed, and heated to high temperature and high pressure, and transformed into gas and then into small molecules. It is then copied into a new small molecule pellet by the vortex force of the system, and the eccentric hole field is encircled by the vortex in turn. Like the rings of trees.

It has the standard of unifying mass and time and space. The greater the vitality of the field, or the greater the eccentric force movement field structure of the system deviates from the center, or the tools and weapons with large mass and time and space, it means that the more energy or force is copied.

On the contrary, when the field is small or the

object is moved to the gravity surface field and decelerates toward the center, the force copied is less.

The mass and space-time in the eccentric cavity field in the figure can also be considered as the new mass and space-time transformed by the system pushing friction. When the objects in the field are moved to a certain field force surface by centrifugal force, the greater the mass and space-time, the more forces will be copied; When the mass and time are small or the centrifugal force is small, the force copied will be less. Therefore, its movement is not only affected by the surrounding environment, tools, weapons, etc., but also restricted by its own quality. And it cannot work independently on its own copy of the force.

Today, 30 years later, scientific instruments can only take pictures of the hole center of a black hole. There is also a scene of a small centripetal force cyclone and a larger centrifugal force cyclone. The correctness of two centers in my elliptic graph is proved. Because Newton does not move at two points or moves at zero, there is also gravity. Ritchie is a circular motion of a little motion, with gravity. It is really unscientific conclusion.

My "centripetal rotation" and "centrifugal rotation" belong to the movement of two or more points circling each other. Only when they are thrown out by centrifugal force in eccentric holes can more energy be reproduced and things transform or develop. However, English tends to mislead people by convergence and diffusion. For example, the balloon expands or contracts at the same time under the inflating force to set and solve problems, which cannot conform to the fact. The real universal gravitation comes from the vortex suction or pull force, such as that of a black hole. Otherwise, there will be no gravity in the universe.

The speed of uniform, accelerated, irregular and decelerated motions designed on the top, bottom, left and right of the ellipse. It refers to the expression that the copied energy changes occur during the movement of a quantum. It also has different names on various occasions Like the four images of the Eight Diagrams. It also means that in physics, gravity, electromagnetic force, strong force and weak force are transformed according to the magnitude of the force. Or it means that the earth revolves around the sun, transforms into spring, summer, autumn and winter, and makes periodic climate changes again and again.

Six different force surface fields set on the ellipse [The eight trigrams are called six gates, such as the gate of life and the gate of death]

There are six process fields: magnetic attraction surface field, expansion surface field, regenerative force surface field, magnetic repulsion surface field, gravity surface field and centripetal force surface field.

It is a reminder to those who set up and solve problems (also the principle of relative number relativity comparison) that there are different masses and space-time force surface fields. It is different from each blade making vortex, and it is a dynamic field.

It is a vivid expression of the law of change during the movement of things, such as the size of the force, the length of time, the quality of geographical conditions and other factors For example, people live in infants, teenagers, youth, middle age and prime of life. The space in the six processes of aging. In each process, there are large, medium and small quantities of space, such as work, rest and illness, and how much energy or force is copied. Therefore, if the mass that causes motion is copied, the energy and force are not conserved. When designing and solving problems, it is necessary to master these changing data and flexibly apply them to the problems of design solution theory to get the correct results.

For example, the unified field center, the mass regeneration field center, the two fish eyes designed on the Taiji Diagram, called Yin and Yang, and the centripetal force centrifugal force in physics are all the same. In addition, I also designed three kinds of quality for each field, namely, large, medium and small, which is consistent with the method and purpose of setting, solving and discussing problems in one trigram and three trigrams of the Eight Diagrams.

For example, calculate that the maximum mass of an object on a regenerative force surface field is 3, and solve the problem after all six kinds of fields are accelerated and energy is reproduced. First of all, if the weight of the object is three, and the time in the field is three minutes after six times, it will be multiplied by six to know that the copied force is 18, just like the number symbols preset in the Eight Diagrams are different, such as good or bad luck You will multiply the result and then check the sign, and you will know that it is like transforming into a lower level substance. If we multiply the unified field center by another, as the leadership quality of the central government is three, they will be copied to produce force 54, and the quality of the regeneration field center is also three, as the policy of the central government is good or bad, the result of multiplication is 162 energy; Say 162 trigrams with eight trigrams. [But its movement is a process of non-uniform movement. When setting a problem, we should also use addition and subtraction randomly.] I can set, solve, and discuss everything, such as birth, aging, disease, and death. The Bagua 64 divination is not easy for ordinary people to operate. It's just like heaven, earth and people.

Like the Eight Diagrams, Chinese physicists can also divide 162 hexagrams into three parts. The 64 hexagrams of the first part of the Eight Diagrams remain unchanged. The second part starts from 65

hexagrams, as if every process of the evolution of the universe is preset. The third part starts from 100 hexagrams, demonstrating the formation and changes in the movement of all things. For example, the element hydrogen in the atomic cycle is assumed to be a hexagram. The problem of element mass and cycle length will occur in the next cycle. If the problem of old age, illness and death is solved, the default diagram is male. As for whether he is young or old, whether he is working or sick, you can directly solve the problem accurately by checking the preset number. Because the theory of unified field is to improve the Eight Diagrams of the Book of Changes with popular physics language, which is more scientific.

If the object in this circle moves continuously, there is no eccentricity. The centripetal circle has evolved into an elliptical sphere three-dimensional diagram structure, just like the three lines of Taiji. For example, the core of the earth is deflected by centrifugal force into a hole on the side of the earth's crust and mantle, or Wang Dekui's expert three spin theory model.

The Yin and Yang of Taiji can also refer to men and women, atoms, nature, good and evil. Cause and effect. Or refers to a spiral arm of genes and galaxies used as centripetal force, and a spiral arm used as centrifugal force. It can also mean that dark energy is centripetal centrifugal force, dark matter refers to or diffuses gas. Otherwise, there was no yin and yang or men and women in the universe at first. All things in the nature are described by centripetal force and centrifugal force, which are two simple and different motions of pushing and squeezing friction, so that more energy or force can be copied from the mass in the unified field, and then the problems such as gravity, electromagnetic force, strong force and weak force can be transformed in the evolution and development of the universe.

The big circle of the ellipse shows that the quantity of its hypothesis, solution and theory is also like its own weight, such as the centripetal force. On the speed of 'centripetal rotation' and other issues. In addition, when the event object is continuously accelerated, it will transform into a stronger centrifugal force. The object moving up this side next time has been transformed into an inertial force, which will gradually increase with the centrifugal force. If the weight of the hanging iron when it is moving up is not increased in the acceleration, the increased centrifugal force will make the hanging iron not shrink downward, bend, fall, and expand outward. If we calculate when we evolve to a spherical hole. It is necessary to add 025 to magnetic repulsion force surface field 2, 05 to gravity surface field 1, and 075 to centripetal force surface field zero at least every turn. 5. Add 05 to magnetic attraction force surface field 1, and 025 to

extension force surface field 2. If the regenerative force surface field is not added, it is known that the reason why the hanging iron does not fall is that the machine is constantly exerted more force by the work system, and the centrifugal force is strengthened. Once and again, it is expanded and expanded by centrifugal force to the circle like evolution with large mass.

If you want to solve the problem by using the Gothabar conjecture, you need to take the new numbers evolved in various fields one by one on the basis of this evolved energy. Calculate by multiplication. [It is not just the copied quantity at the beginning to calculate. Their calculation is very complex. First, the process of its uneven motion requires randomly tracking and calculating the six force surface fields, and each new number is evolved after the motion, such as adding and subtracting.] We also need to know the original quantity of work. When the deceleration occurs to the slowest speed in the process of non-uniform speed, first subtract the original weight of the whole system of the housing, and then multiply the original weight of the work ball by the slowest speed of the machine, which is 400 revolutions, to obtain the evolved inertia force of the work ball. When doing work for the system of the machine again, only a part of the force can be used to make a greater acceleration of the machine, which will transform into a stronger force. However, although the work ball cannot be thrown out as the machine decelerates to centrifugal force, the machine is still decelerating gradually in the inertial force.

Therefore, when the work ball presses down again to do work, minus the weight of the starting shell, as long as part of the force is applied, the machine can be accelerated. And after each acceleration, the cycle time of uneven speed is also shortened, but the hole is indeed expanding. For example, social contradictions are increasing or contradictions are intensifying. Therefore, it is very complicated to solve the problem of Gothabar's conjecture. One must follow the step-by-step calculation to solve the problem.

If we now want to know how many revolutions the machine turns, how much inertial force will be transformed if we give it multiple work balls. Suppose that the large shell of a hollow shaft with a diameter of 1 meter weighs 1000 kg, while the diameter of the head shafts at both ends of the hollow shaft is only 8 cm. Divide one meter by two, divide by eight, and then multiply. The hollow shaft is set in the bearing pedestal. First, it is accelerated internally, such as the hanging iron on the power plate, from top to bottom in turn to protrude and press down on the arc surface of the middle section of the large shell. The weight of the work ball must be at least 100 kg to rotate the large shell. In order to convert greater inertial force, the ball weighs about 200 kg. Only when the eccentric lever arm is pressed down, can the hollow shaft be

accelerated to 1000 rpm. It is known that the mass of the large shell of the machine is the weight. If it is accelerated, it will be converted into greater inertial force, and then the numerical value of the inertial force will be obtained.

Since the ball doing work on the eccentric side does not get work from it, its mass and weight are also increased, and the acceleration of the mechanical force has transformed into centrifugal force. If the hanging iron is thrown out when moving from down to up, it will not shrink toward the center and bend down, and then lose the small eccentric structure of the hole formed by the falling of the hanging iron, that is, it will evolve into the center of the ball. The working ball will lose its thrust. When it falls vertically, it will also fall toward the center displacement. The eccentric system of the driven machine will lose more force. The eccentric machine will rotate at a reduced speed in the inertial force. For example, the pushing friction generates electricity and magnetism, and the four physical forces are unified by the inertial force.

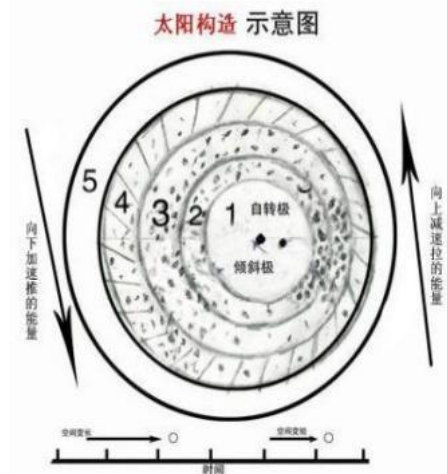
Just as the speed inside the atom slows down, the nucleus loses its strong centrifugal force and shrinks toward the center, transforming it into a weak force. Quarks also slow down in the inertial force and move around the center randomly. American physics masters call quarks free particles, which may confuse Chinese college students. The real system can not work for the atom. To make quarks move randomly. Modern physics can mix the mass and energy of objects to set up problems and solve problems.

At the same time, suppose that the parity of the structural type of solution theory, such as atomic photons, is the law of non conservative dynamic fields, such as the gradual deceleration in atoms. The centrifugal force is reduced. Small molecules and subatoms are shrunk and bent from bottom to top, and move around in a decelerated centripetal vortex. Only the elements have different time periodicity, and the electron elements are copied by the centripetal force, and the mass of proton elements is transformed by the 'centrifugal rotation' force. They strengthen the nucleus at the center of the atomic system by increasing the transformation time after time, and are pushed out by the force of "centrifugal rotation" to accelerate the rotation movement.

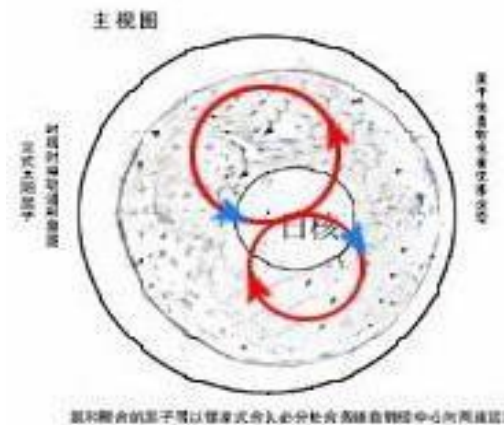
A number of subatoms, neutrons and quarks in the nucleus are pushed out by the powerful centrifugal force to form a group of physical forces. They push one by one, just like the force exerted by the wind on the water in the sea, forming a rippling big wave that pushes one wave against another. At this time, the atomic nucleus and a proton and subatoms accelerate the pushing and friction to generate high temperature and pressure, which leads to the transformation of nuclear force inside the atom. [Nuclear force refers to

the chemical force or all protons, subatoms, neutrons and quarks in the atomic nucleus, which are subjected to the explosive force of the powerful high temperature and high pressure chain nuclear fusion reaction, or the shells of protons, subatoms, etc., which are subjected to the explosive force of high temperature and high pressure, and one impacts the other subatomic shells, etc., thus strengthening the explosive force and causing a big explosion in the atom.

Therefore, clusters of matter and subatoms in the inner holes of the exploded atoms are all scattered in the cosmic space, which makes the universe evolve from nothing to atoms, to dark stars with greater mass and red giant liquid spheres.



此图是太阳构造图，各点表示米粒和原子分布，切线表示光球若干活动线。日核以 1500 万度向 2 中介层向 3 对流层向 4 光球 6000 度外辐射对流，五色球也是以 1500 万度从外向内辐射对流从此改变原子质量。



太阳对流层的原子可以像水式流动，必会由外向内辐射对流中心向两端流动。

The schematic diagram of the original structure of the sun and sunspot movement is for reference only

The above shows that dark matter in the universe is called Midiao Qi, and dark energy is called centripetal force and centrifugal force. All things in nature are described by the two simple different forms of pushing friction, namely, 'centripetal rotation' and 'centrifugal rotation', which changed the old appearance of only gas movement in the universe. It also provides a model wisdom method to create new things through genetic replication and transformation.

Of course, this theoretical number is my personal assumption. In practice, the expansion rate is determined by the force, speed, time, location and other conditions that the mass is subjected to. At present, the physics theory does not talk about this, and the results of scientific experiments are obtained by using a powerful collider. Because the fragments and gas after the explosion are surrounded by different forces and conditions, they act as centripetal vortices to form different new particles. There is no real force from the universe, there is the force of the Big Bang. So those who set up and solve problems without unified field theory also have no Taiji culture to justify themselves.

For example, the speed of the four kinds of motion, such as uniform motion, upward downward acceleration, irregular motion, and downward downward deceleration, are pushed by centripetal force or centrifugal force, and the magnitude of friction is divergent and transformed into the mass on their respective fields. For example, the plate on the earth's surface is moved on the mantle plate by displacement, and the core is rotated and pushed against the inner wall of the mantle by centrifugal force, and then combined with sunlight The hot air flow that makes the mantle heat escapes from the ground, forming the spring climate with the atmospheric circulation. When the earth core is accelerated by centrifugal force, it will push, rub, and heat with great force, which will also transform more electrons into the summer hot climate. When the core moves irregularly, the pushing friction transforms into an irregular autumn climate. When the core decelerates in the mantle, the heating force on the inner wall of the pushing friction mantle is small, which is transformed into a repeated winter cold climate change. Then there are different plants growing in different seasons, and those plants have emerged multi-dimensional space such as birth, aging, disease and death during evolution.

In the prediction of the Book of Changes, these four speeds are called four images, eight gates and sixty-four hexagrams to predict events and the future. At the same time, the algorithm first revolves anticlockwise from the bottom up to the center, and then is thrown to spin centrifugally from the top down. Although their descriptions are different, their basic meanings are consistent with the purpose of expression.

It is like a person with five viscera and six internal organs. Without its cooperation, people cannot live and make more contributions.

If the interior of all things is the same as the various force surface fields on the elliptic graph, there is also a certain amount of mass, and how much energy is copied. For example, there are six tomatoes inside. There are five small hole fields inside the cantaloupe. The number of seeds can be copied. For example, the centripetal force field is the death gate of the Eight Diagrams. Generally, good seeds will not be copied, and even a small number of seeds cannot blossom and bear fruit). Just as a human mother has had several children, some sons or daughters have been promoted to positions of wealth, and some other sons and daughters have never been known or even had children.

The Taiji Diagram also points out that the movement of everything, just like the chaotic crowd walking in the traffic road, should follow the traffic rules of red light stop, green light and walking up and down, which can greatly reduce the occurrence of traffic accidents. When some powerful or powerful people violate the traffic rules by force, causing traffic accidents or conflicts, there are rules to follow to deal with the problem.

For example, traffic rules and other regulations are the same as the common morality of walking on the road. It is convenient to set up and solve problems. This is the profound connotation of Chinese Taiji culture, which is practical and has no side effects. If the usage is used as the executive standard, there is a problem For example, the traffic regulation law of China is fundamentally different from that of Japan, which divides up and down traffic. They drive on the left, while the traffic rule of China is to drive on the right And the law can not be asymptotic at any time after it is established. The word "German" covers a wide range of areas, which is scientific and civilized. If there are few contradictions in law enforcement, it will be good.

The reason why the Taiji Diagram of the Book of Changes is the structure of the three trigrams is that it comes from all things. Such as seed coat, meat in the middle, and kernel. Or guide the enlightenment of the system structure of the car shell, the middle power disk, the power ball in the eccentric cavity, and the eccentric shaft. For example, the ancient three lines represent the three main conditions of heaven, earth, and man, or the left, middle, and right respectively. It is convenient to predict and solve the problem of good or bad trends in the development of things.

However, the unified field theory sets up and solves problems, such as the size of the mass, the force, the speed, and the combination of time and geographical conditions And how much energy is reproduced in each cycle of motion Therefore, whoever

happens to be of high quality is a unified field, and there is no unchanging norm field.

You can see that the ancients developed their own cultural and theoretical systems by flexibly using the Taiji Diagram according to their positions. For example, King Wen of Zhou used 64 hexagrams in the Book of Changes to describe the handling methods of 64 major events. The six lines in each hexagram tell the six main points or six stages of handling the matter. For example, Shigua talks about how to fight; The Divination of Litigation talks about how to bring a lawsuit; Xun Gua talks about how to protect wealth; "Dui Gua" talks about how happiness is safe; Well Divination tells how to meet the needs of the people; Follow Divination tells how to deal with the ministers around you; Lin Gua talks about how to monitor the world; The Gua and the Gua tell how to assess rebellion; "Ben Gua" talks about how to arm yourself; Ge Gua talks about how to make revolution; Family Diagrams tells how to manage wives and children. As Master Li Mingzhong, who studies the Eight Diagrams in Guangdong, said, it is the political theory of Emperor Ning's political power that King Wen of Zhou creatively talked about establishing the country and governing the world.

On fucius created benevolence, righteousness, propriety, wisdom, and faith in Confucianism, and created the highest realm of moral cultivation by virtue of the golden mean. Of course, their culture is not perfect when they manage the country and consolidate the stability corps. If you do not listen to the Confucian principles of benevolence, righteousness, propriety, wisdom and faith, you will not be able to persuade Buddhism to kill, steal, commit adultery, delusion, and drink good and evil. A person who does not believe in the long-term interests of gold, wood, water, fire and earth of Taoism and is dedicated to doing evil things. The laws and regulations of the central government with high quality are designed according to the elliptical chart. Only allow them to behave themselves and not allow them to talk and move around, otherwise the rule of law dictatorship will be implemented. Or flexibly apply the great wisdom culture of Mao Zedong Thought to unify their thoughts and behaviors. For example, should we first distinguish between contradictions among the people or contradictions between ourselves and the enemy? Is it a religious contradiction or a national contradiction? Is it economic contradiction or personal interest contradiction? Different contradictions should be solved by different cultural methods. For example, religious contradictions should be solved first by people who understand religious culture and even respect local ethnic customs.

If there are economic contradictions, we should use people who understand economic work to solve problems through consultation, and we will not turn

contradictions among the people into contradictions between ourselves and the enemy. It has become a grand unified culture of Taiji, where the symptoms and root causes are treated together.

The Taiji Diagram of Fuyi can play a huge role in science and technology if it is explained clearly in physics.

It is also that the picture of the Eight Diagrams is not comprehensive. It is only used to set up hexagrams to interpret hexagrams and reveal the basic laws. Therefore, the unpredictable randomness in the development of a thing will also reduce the scientificity of Taiji theory. They are not the inventors of Eccentric Vortex Engine.

If you can make it clear at a glance, like the elliptical movement trend chart, to evolve the micro motion of everything, and then combine the length of time and geographical advantages of the speed of the force that the mass is subjected to, to set up problems and solve problems, the natural science can also be advanced 3000 years, and the explanation of quarks from particles should not be the Nobel Prize for Americans. Even this small discovery should not have a Nobel Prize.

Although, several decades ago, Professor Wang Xiyu of the Chinese Academy of Sciences worked hard all his life to solve 162 difficult problems in nature with Taiji, which was very insightful. But he did not really understand the Yin Yang diagram of the sun, that is, the elliptical diagram in the unified field theory; If the centripetal force 'centrifugal force' is flexibly used in problem setting and problem solving, it will be powerless to be recommended for the Shennuo Award.

At the same time, people all over the world have little comprehensive research, application and development of Chinese Taiji moral culture, and the world is not stable.

There will be different moral standards in different periods and countries, but China's Taiji culture, in the simplest way, reveals that everything must abide by the moral and cultural standards of the Tao, enlightens and exhorts people to act in accordance with the morality jointly respected by the Tao, such as legal provisions, to solve all the problems in nature, and also to push the friction size along the centripetal force and centrifugal force to set problems. For example, when he was in power, he could follow the 64 major events described by King Wen of Zhou. The macro analysis should emphasize the unity of contradiction and the integration of opposites according to the Taoism inaction thought founded by Laozi. In dealing with ideological education, it is necessary to establish a systematic culture based on the benevolence, righteousness, propriety, wisdom, belief in Confucianism and the doctrine of the golden mean established by Confucius and others, and the killing,

stealing, prostitution, delusion, wine, etc. of Buddhism to cooperate with political and ideological education. It is more conducive to social stability, unity and self-reliance among the nations of the world. Therefore, Chinese Taiji culture is a systematic culture of morality.

Throughout the history of human development and the history of understanding of the universe, new theoretical viewpoints with characteristics of the times came out in each period. However, with the progress of social science and technology, these theoretical views have been replaced by epoch-making new knowledge. However, in the history of human understanding, the only enduring and increasingly proven combination of profound mystery and truth with the development of modern science and technology, is that China's "Taiji" used to be, is and will be applicable to moral culture. Therefore, Taiji is by no means simply a science of divination, divination and prediction. In fact, it is a general knowledge and a general outlook on the universe covering all fields of heaven, earth and man. The essence of "Taiji", that is, centripetal centrifugal force, or the theory of omnipotence established by the number (prime) of the universe's yin and yang fields, the unity of opposites of alternating transformation, etc.

For example, I use the elliptical graph of the theory of the unified field to explain the origin of the universe and the process of rotation and evolution, seismic evolutionary chemistry research, atomic evolutionary chemistry research, carbon dioxide is not the culprit of climate warming, why the ice age came irregularly, the cause of the ring structure of cosmic microwave background radiation, and request that the use of radiochemotherapy to treat leukemia, cancer and AIDS be stopped immediately, why genes can only copy energy Thesis on "Soul" As well as publishing the popular science book of Taiji Talk World and publishing it in the arena of American scientific academic field.
<http://www.sciencepub.net/academia/aa2012suppl> .

[In addition, I only wrote 162 kinds of data when I revised the paper [Understanding the Eight Diagrams] on January 2, 2015. While Professor Wang Xiyu's solution to 162 difficult problems seems to have happened before 1968, I don't know where his basis came from. There can't be only 162 problems in the world.]

Therefore, it is important and urgent to fully unlock the Taiji culture. We must not, like Darwin's theory of evolution, let people copy success. It is also necessary to let Taiji approach civilians to master and use it.

Due to my busy scientific research and limited understanding and culture, I can't use the computer to search and write materials on the Internet to help me. To briefly describe this part of the Taiji problem, I firmly believe that experts in various fields in China,

such as the systematic cosmology founded by President Luo Zhengda of China, and there is an old scientist in mainland China who is not afraid of hard work, Zhou Juchuan, just like Laozi Confucius, who created the Yin Yang Taiji physics, which is very systematic and profound. And Zhang Xiang of Anzheng Lujiang County and other scientists predicted in advance that dynamic patterns would appear on a large scale in people. These Chinese scientists have all worked hard to establish a system framework for the world in advance. The physics of dynamic fields has opened up a beautiful and wonderful landscape, which will benefit the future life of mankind.

The above contents are for reference only, and we hope you can criticize and correct the inappropriate ones.

Reference:

Book of Changes and other materials [10000 volume publishing company].

Wang Xiyu solved 162 difficult problems.

The Elliptic Graph in the Comprehensive Discussion on Unified Field Theory, 18 Science and Technology Information, 2007, pp. 5-6.

I added wisdom and strength to my reading of the book of magic door Dunjia written by Hong Kong people 30 years later after the Spring Festival in 2007.

The truth of the Book of Changes was written by Li Mingzhong, a blogger.

"The Magic Morse Code and Ancient Trigrams" is an expert research article by Zhao Yuwen, Wang Dekui.

<http://www.sciencepub.net/academia/aa2012suppl>

In 2012, the American natural science magazine Taiji Talks about the World published novels and articles in the academic arena.
<http://www.sciencepub.net/academia/aa2012suppl>

The mathematical formula description of Wang Yiping in China is quoted from the Point State Gauge Field and the Structure of Relativity

Abstract: Cancer is the general name for a group of more than

Comments of the Masters of the Cosmic Science Group

a00 inf 自然力宇宙科学[423 烟斗大师评论 @ 孙纯武 你对太极的理解 还真实是理解!

A00 inf Natural Force Cosmic Science [423 pipe master review @ Sun Chunwu, your understanding of Taiji is still true!

Chief Engineer's Comments

Yes, I really benefited a lot from watching it. No one has such a profound understanding of the Taiji Diagram and can be closely related to the current social phenomenon. If you can do this, you are Mr. Sun!

Content introduction

Dear Sun Chunwu:

We saw your article entitled My Understanding of the Eight Diagrams of Taiji in the Academic Arena magazine. It was impressive and attracted our attention. Your ideas, understanding of the discipline, problem-solving methods and methodologies are excellent. I am honored to invite you to submit your new article to the British Department of Science and Education Services, a journal of social science research progress

All kinds of problems that are not understood in this article, especially patients, should be emailed to my email address yzscw0514@163.com : Or add my WeChat scw20171020, because I am a deaf old man, please write a message on WeChat, and I will let you get a satisfactory answer until you get cured at an early date, free of charge.

The second edition of Taiji Words World Book mail order; The book is ready for your payment I'll give you a tax receipt.

Both the patients with financial difficulties and the disabled certificate are free of charge. However, the express fee is paid when the book arrives.

Donation of the funds obtained after the sales of books is specially used for people in urgent need of funds or in emergency 江

Room 805, Building 20, Shuxiu Garden, Xihu Town, Hanjiang District, Yangzhou City, Jiangsu Province Postal code: 225008 Sun Chunwu.

The book of Taiji talks about the world is the scientific principle of deciphering the Eight Diagrams of Taiji, an oriental mysticism. It combines education with entertainment through the simple culture. It is specially designed for young people, research enthusiasts and inventors to create a more amazing new knowledge of today's scientific world, so that you can read through this book about many major world problems, such as the universe from scratch to the world, from there to there, Use the new scientific knowledge with the least time and the most to enrich and liberate oneself, and be a know it all with superior ability. For example, first understand the creation of the universe, the generation of earth mountains, water, plants, animals and people's birth, aging, disease and death, and many other world problems. Young men and women learn to master the practical knowledge in books, so that life and the next generation can live a happier life. Aspiring entrepreneurs get entrepreneurial experience from the book and become successful and rich. Especially for patients with leukemia, cancer, AIDS, ankylosing spondylitis and neocoronary pneumonia virus, it provides experience in disease prevention and immediate treatment, as well as in prolonging life.

More importantly, scientists have searched for her thousands of times. They can get enlightenment from the book, liberate from the old physics, and create a more complete system framework, structure, dynamic field, new physics and new philosophy. There is also an encyclopedia suitable for all kinds of people to enjoy the lost time, which is a must for home.

Who gets first, who benefits first.

