



## I understand and use of taiji map contribution sun chunwu

Sun Chunwu

Yangzhou City, Jiangsu Province, China. mainly engaged in the study of natural science; Author statement: The following article I guarantee is the copyright owner of this work, Name of the unit, Jiangsu Yangzhou Sanli Electric Appliance Group Co., Ltd E-mail: [yzscw0514@163.com](mailto:yzscw0514@163.com) qq number: 458669609; WeChat ID: 17306271565

**Abstract:** Knowing the material basis of the original celestial body, it is the force of the force to push forward the frictional motion. Its principle mechanism is to transform the sputum and copy more energy or force. The celestial body is from simple to complex. From the low-level to the advanced step-by-step evolution, the universe of all things or celestial bodies who are of great quality or proper method, who is a unified field in this living field. There is no immutability. They make a one-dimensional repetitive and orderly movement in time, and space is the orderly movement of disorderly movement, irregular velocity, irregularity, and asymmetrical elliptical motion. Explain that the universe's celestial bodies should start with the perfection of physical theory to solve the problem. Solved the physics theory, all the breakthrough problems have been solved. It is known that if a star moves upwards as one of the stars in the center of the galaxy, it will be consumed by the friction force on the field, and the inner core of the planet will be copied. The rotation force is reduced, and the rotation speed is slowed down. Therefore, a planet moving upwards forms a density wave when it is elliptical. The light transformed by the friction on the planet is also darkened, and it is shot at the center of the galaxy. And another ice age in winter.

[Sun Chunwu. **I understand and use of taiji map contribution sun chunwu**. *N Y Sci J* 2020;13(4):59-77]. ISSN 1554-0200 (print); ISSN 2375-723X (online). <http://www.sciencepub.net/newyork>. 8. doi:[10.7537/marsnys130420.08](https://doi.org/10.7537/marsnys130420.08).

**Key words:** celestial body; matter; energy; force; eccentric vortex engine; planet; galaxies; center; orientation; heart vortex; elliptical motion;

In a letter to the Chinese Scientists Forum (August 2005) from an English-speaking Chinese consultant from the Chinese Academy of Sciences, Chen Yiwen pointed out that many people are not yet sensitive to the fact that many fields of science and technology in the world are on the eve of a major scientific and technological revolution that will bring about major scientific and technological innovations to the original basic theories. This great storm of scientific and technological revolution started in which country, which country will benefit first; Which universities can be sensitive enough to this, which universities can be prepared and benefit from it. On the other hand, which universities have no feeling about this, they may fall behind. So far, no one has believed it.

I hope that my article will attract the attention of experts and teachers. Because the 21st century is the greatest contribution of the Chinese to the physical world in the 21st century. It is also the Nobel Prize for the most century. I am only sending a good message to the world. A perfect work of philosophy and physics has started. I am only an expert. They lead jade.

Why Chinese people have not won the Nobel Prize so far, there is a new standard in science classes

that American students should learn, such as: not advocating Darwin's theory of evolution, etc. Because his theory cannot be copied and confirmed in practice. The ancient Taiji map, which is unique to our Chinese education community, has a very grand philosophical philosophy. It is designed to be particularly convenient and applicable, and it also attacks the door of the modern science hall. It is true that a small number of people are interested in research and research. It is always believed that due to the age, it is imperative to truly solve the Taiji gossip map for modern science services.

What is the inspired and how to create the Taiji map? What are the effects of the Taiji map? What purpose did you create it for?

First of all, who wrote Zhou Yi, what is a book? Mr. Wang Xiyu believes that the innate ancient Taiji gossip figure was born in the Neolithic Age at least 6,000 years ago. It was painted by Fu Xi, the pioneer of the Chinese people, and the ancestor of the Chinese. With the help of the information obtained by the high function and the remnants of the last round of human civilization, the revelation of the river map and Luoshu, he looked up and looked at it, like the heavens and the earth, approaching himself, and far-reaching things,

thus inducing insights. It has drawn the innate ancient Taiji gossip map and passed it on to it. It has become a guide for modern human beings to open up the clouds and understand the universe.

Mr. Gan Quan believes that the Book of Changes is a collective work. Through the interpretation of philosophers of the past dynasties, it has developed into a profound and profound philosophical work. At the same time, it is also a classic in ancient China about natural sciences and social sciences. The Zhouyi ancients used it to predict the future, make decisions in the country, and reflect the current phenomenon. On the test day, the next test, the middle test personnel. However, this is only a means that the ancients relied on before they mastered scientific methods, and it was not true science. Although some understanding is consistent with science, it is because this understanding is scientifically justified, but it cannot be said to be scientific. Only when it is a culture.

Zhao Yuwen expert research said that the ancient United Nations from about 6390 BC to 3151 BC had a virtuous circle of politics of "promoting poverty and promoting poverty". After the Shennong, Huangdi, Yi, Shang Tang Yi Yin, Zhou Wenwang, Zhou Gong, Confucius and other fires have been in succession for 4,500 years, up and down the inheritance of 6500 years, and finally from about 2,500 years ago to Qin and Han, only to complete the Taiji Taoist through.

I also think their research results are reasonable. However, no one has really understood the taiji map and its origin since ancient times and no conclusive empirical evidence has solved the mystery of the eight diagrams. Therefore, the study of yi learning in China still has no significant progress in the exploration of the principle, the theoretical research has stopped, the thought is confused, and the practical application tends to mysticism.

The above imperfect understanding has seriously affected the academic status and scientific value of Taiji, and hindered the pace of the development of China's Yi Xue. First of all, unravel the source and original meaning of the word "Zhou Yi". As for the "Zhou" in the "Book of Changes", there are quite a lot of methods in the calendar. If some people think that Zhou is the meaning of "Easy and easy to do", others think that Zhouyi refers to the Zhou Dynasty. The Zhou Dynasty is accepted by the average person. Many people think that the word "week" in Zhouyi is the meaning of the age.

In the "Simple Moral Classics", Zhou is a perfect and thoughtful, and it is easy to change the movement. I think that Zhou is the week that represents the spin cycle of all things. I know the cycle of spin. It is meaningful to live and demonstrate that you have any functional effects and changes. It's easy for you to know why it can make a spin cycle. It's easy for you to

have a change in its movements, whether it is in the past or not. Just like knowing people's life in six periods, they need to breastfeed during their infancy, young people are learning, middle-aged and young people are working, and old people can enjoy the rules of their old age.

The following is a brief overview of Zhouyi to explain its origins.

According to legend, the birthplace of Zhouyi is now the world heritage city of Anyang. Yuli City is located 10 kilometers south of Anyang City.

In daoist magic's book, Tai Chi was created by burning deformed lines on the tortoise plastron, Luoshu, etc. Those who invented it knew that neither was scientific. A new theory could not be invented without coming from the practice of natural science. The creation of Tai Chi by burning deformed lines on the tortoise plastron could not establish the theory of Eight Diagrams. In daoist magic's book, it is also said that the alien may have sent the heavenly book to the Yellow Emperor. Who is the alien? No theory can be fabricated out of thin air.

Therefore, I recently obtained data research and found that about 7,000 right, Veracochoa or Maya may have heard the rumors that the heat will destroy humans in the coming summer, in order to turn the earth around the earth in the next 25800 years. The earth transforms the force to be small. When the centrifugal force pushes the core to rub the inner wall temperature of the mantle gradually decreases, a small ice age occurs, and then returns to the ground for the final Chinese terrain ground mapping (this is a historical record). The information can be found in the world of the number of ISBNs ISBN 436-39240-9 [ [disappearing technology civilization], may be seen at the time of the Yanhuang land on the battlefield, when the battlefield was fierce, the corpse was everywhere, the blood flowed into the river. The teacher of justice is still unable to win. I will use the guide car I used (that is, the perpetual motion machine. This car can move forward at that time, or the position of the Chiyou position in the south, the chariot heading south. The ancients gave this car a guide car) to Fuxi. It broke the fog that was fierce and fierce, especially when it was fighting, and ended the protracted war. Maybe they will have a difference between the two, or the difference between the years of the Yellow Emperor does not affect The car is real. Or Fuxi took advantage of the guide car that the Yellow Emperor had invented to fight, and finally won the final victory of the war.

I think that at least the Yellow Emperor developed the ancient Taiji culture. He sure that after the end of the war, he studied the guide car of the military. There are two central axes and eight sets of elements in the cavity of the guide car disc, and three

sets of different shapes and pieces on each set of parts are enclosed by internal eccentric cavities, iron balls in eccentric cavities, etc. The pieces do not use any external energy and make different forces. For centripetal centrifugal force, the eight sets of elements are naturally on the sides of the central axis, the wheel turns over from the top to the bottom and is pressed down on the inner shell of the large outer casing, and the other side is moved from the bottom to the top by the continuous force. It is the inner eccentric cavity enclosed by the eight sets of elementary rings, the weight of the mass ball in the eccentric cavity, and the eccentric system is like the force of copying more pressure on the lever arm. Driven the situation that the guide car does not rotate at a constant speed and forwards, and there are two different contradictions between the natural and the physical movements in the natural world, such as the rapid evolution of life and death. Created a Taiji map and theory. It is just like using the abacus to calculate the number, to predict the future, to make decisions about the country, and to reflect the current phenomenon. On the measurement of the day, the next measurement of the ground, the measurement of personnel and so on. This is one of them.

Or the remains of the last round of human ancient civilization—the river map, Luoshu, etc., and through the enlightenment of the eight sets of elements in the guide car, look up and down, like the heavens and the earth, take close to themselves, and travel far away. In order to sense the epiphany, perfection draws the innate ancient Taiji gossip map, and designs various lines and data for various predictions.

It is also possible that Laozi also invented the shackles in the cavity of the guide car disc when the alchemy was originally used. The stellite iron on the side of the center is centrifugally extended upwards from the top to accelerate the upward movement, and the sputum iron moves upward on the other side of the center. It is true that when the centripetal force is contracted to the heart and the speed is reduced, it is like a fish jump. Therefore, in view of the understanding and the level of science and technology at that time, using yin and yang fish to express, or the best expression also developed the Taoist theory.

The purpose of the "eccentric vortex engine" invented by me is just like the machine consists of three parts: prime mover, working mechanism and transmission. The principle of the "eccentric vortex engine" is like the two systems of the electric motor are rotated together with the electric current, but it is a hollow shaft composed of a bulky large shaft disc and a large outer casing of a simple cavity, which is like a motor casing. The stator is an eccentric scroll system surrounded by a working disk that is biased on the side of the central axis, and a plurality of sets of hanging

irons on the work disk, such as the weight of the hanging iron actively from the side of the upper hole of the hole. The grounding is accelerating and pressing down on the side chord of one side of the inner shell of the large outer casing, and is subjected to the force of pressing down the weight wheel of each group of iron parts on the work disk, and the hollow shaft of the bulky sleeve cavity. The force is rotated in the bearing housing.

Therefore, when the other side of the large outer casing is rotated upward, the centripetal iron 5 and the hanging iron 4 which are in the ascending state are convergently closed due to the frictional force such as frictional force, and the internal eccentric cavity field is formed when the center is contracted and bent. In order to make the weight of the work circle in the eccentric cavity field, more downforce is copied, and the hollow shaft machine is forced to rotate. Just as the gasoline combustion force reciprocates the crankshaft of the gasoline engine, the energy force is transmitted to the outer casing, thereby effectively utilizing the energy, so that the bulky large outer shell is accelerated by the force, and the inertia is converted. Force reduces the energy consumption of the engine. And the conversion of more inertial force to extend the downtime of the time gradually slow down. The hanging iron overcomes the centrifugal force during the speed reduction and exerts the gravity effect. The upwardly moving hanging iron makes the centripetal force contraction and bends to form the eccentric cavity field, and then the force circle in the cavity field is copied and pressed downward., so that the machine will not rotate evenly and then accelerate again.

It differs from the fuel engine as a set of conversion systems. If the conversion of gasoline into heat is not good enough to be replicated and dissipated, the energy is conserved. It is also different from the mechanical work in which only the rotor does work and the outer stator does not rotate after the motor is powered. Although the principle of the work of the "eccentric vortex engine" is like an electric motor, the hollow shaft composed of the large shaft and the large outer casing of the simple cavity is pressed downward by the combined force in the system. That is to say, the stator becomes the rotor to be rotated, and the power plate and various components are arranged on the central axis, which is positioned on the large eccentric side, such as the iron on the work disk, actively pressing the simple cavity from the top to the bottom. Large outer casing. The central shaft rotor becomes inconvenient to rotate. But the advantages of both are to make more work for the rotation. Patent No. 201810298433 4. After the acceleration, the epiphany of the fastest 800 turns or more. First, in 1998, the first draft of the unified field theory was written. Although the translation fee was shared to 10,300 yuan, none of

the translators who translated the papers for me would register online for natural journals. [A female graduate student I met at the photocopying shop registered my e-mail address online: yzscw@163.com and all personal information, but others are not willing to contribute to me online] and the Chinese journal of nature and science can accept Chinese. But all the online mailboxes rejected my poor quality manuscript. [Later, Ma Hongbao, editor-in-chief of the American scientific journal, will publish the English manuscript of the unified field theory in the academic arena of the natural sciences].

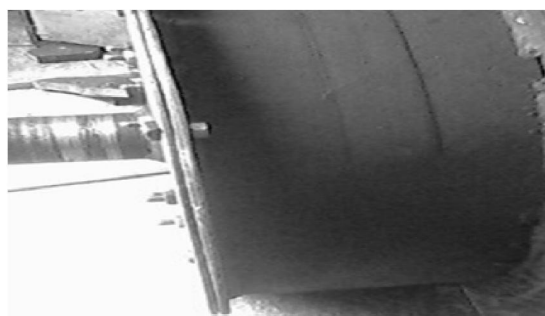
Therefore, on the second day of the Spring Festival in 2007, I boldly invited Xiaoling, a graduate student of Nanjing Forestry University, to see the model of the "eccentric vortex engine" that I invented, and whether the control paper was correct, but he was criticized. When I bought old books on the stalls in the eighth day, I saw the Qimen armor books written by Hong Kong people. After reading them carefully, I added wisdom and strength. It turns out that Taiji said that yin and yang have a second life, and that two generations of three produce everything and the inner table of the figure is like an empty door. In fact, my "eccentric vortex engine" is also an ellipse of the problem that I created the theory of the unified field. The expression of a statement, but my use of centripetal force, centrifugal force, etc. to express, more scientific and accurate than yin and yang. And let people know more about the trends and causes of the development of the event.

At the same time, the ancients have argued that Fuxi saw that Yushou made a fog and could not win, and invented the guide car. And the aliens gave the Yellow Emperor Tianshu, and the saying that the gossip has more than 10,000 years of history. Therefore, whether it is from the ancients or Fuxi, etc., it is more scientific to be written by the enlightenment of the guide car.

Then why is it called gossip? Ancient people believed that the most basic element of the yi gua system was the concept of Yin and Yang, which included the nature and state of Yin and Yang. If we ignore the status of Yin and Yang and only discuss their properties, we can use the Yang yao (-) and Yin yao (--) to represent Yin and Yang. The eight basic hexagrams, namely "gan, kun, zhen, xun, kan, li, gen and dui", are called the eight classics.

I think it is inspired by the eight sets of accessories in the guide car? When the eight arrow-like parts mounted on the disk in the figure below are stood up, [only for reference pictures, the actual objects are slightly different] is that the one piece naturally protrudes from the height and accelerates downward to make a centrifugal force. On the other hand, when the inertial force of the jaw is

accelerated from the bottom to the top, the natural descending speed is to the center contraction and bending, and the centripetal force is made, which are all on the disc. And infinity or infinitesimal perpetual motion, using small pieces to form the system structure of work, just like a small molecule or a cell to form a system to replicate energy or force is the most ideal combination. For example, people have hands, feet, ears, and eyes to go to the event to easily copy more energy, so that people continue to evolve. Therefore, the ancients composed the system structure according to the eight sets of elements in the guide car cavity to replicate the energy or force. Therefore, the theory of predicting past, present and future is called the gossip noun.



When I first created the patterns and formulas for solving problems, I used the model and data of the eccentric vortex engine, and seriously studied all things such as seeds, cells, and earth. They also found that they are all models of elliptical motion. Go to evolution. Use the drawn graphs and formulas to solve problems. For example, write a science book to solve the developmental dynamics of the microscopic movement of all things, and for the future, as for the past, you can understand the problem at a glance. In line with the requirements of the French scientist Laplace: we must regard the current state of the universe as the result of its previous state, and the reasons for its future development. Therefore, in order

to let people better understand physics and apply physics theory flexibly, I started to write a theoretical article on the unified field, even though I was a primary school culture.

What is a unified field? For example, the quality of the eight pieces of the fish-like shape in the above machine is uniformly hung on the same disc place, and different forms of movement have occurred. And who is living in a large mass, who is in this place More energy is copied. Therefore, the place where mass exchanges energy or force, such as the planet, the atom, the seed of a plant, a cell, a country, and a living structure, etc., set it as a unified field and people when solving problems. Understand the next step.

What is a unified field? Usually, the problem-solving problem is to occupy an object that consumes a lot of energy, such as the rotation pole of the earth, the center of the atom, the central government of a country, or a living body frame structure. Positioning it has a unified field function. In this way, it is possible to change the mass of the planet on the galaxy, the speed of the movement, the distance from the center of the galaxy, or the changes in the planet's galaxy at various locations around it. Or, like the rich and the poor, can make accurate mathematical calculations or explanations. I also know who has the highest quality of life and who is the unified field in this kind of place.

Therefore, the time for an event calculation starts from this time, [this time is not only the standard time of the quartz clock] but also disappears with the event spin, and the time ends from this time. Its function is to position the surrounding objects and unify them in the limits of motion. And provide or genetically intelligent energy or force to surrounding objects. But the space does not disappear as the force does.

What is the theory of unified field? If the planet is as small as an atom, it is a plant seed or an animal such as a cell. They all die like old people, and they also emanate at different times or positions, such as yin and yang, more or less, one side of the center is accelerated, the other side is slowing down, and centripetal and centrifugal and uneven speed. Problematic exercise or activity. It reflects that they are a dynamic field structure. The physics theory of the system frame structure is required, just like the reinforced concrete frame structure that the architect uses the reinforced yellow sand cement to infuse, and is also designed to be suitable for living, such as dining room, bedroom, cupboard room and bathroom. The owner will not put the toilet paper in the dining room, nor will the bedroom bed be placed in the dining room, so that they can come up with micro-motion problems in their past, present and future development. The words and numbers are used to indicate that the use of physical nouns is a problem that occurs in a

unified field. It is the understanding of all the origins of the ball and the state structure of the movement. It is the microscopic and macroscopic problems reflected in this ellipse, which can be comprehensive, systematic, connected, and developmental. Demonstrate that they are moving in a unified field, and they have various random problems such as old, sick, and sick. It is also quick and easy to demonstrate why it accelerates or slows down on a field force surface, and the planet forms a density wave when it is surrounded by the center of the galaxy. So the theory of this theory is unified. It also includes the philosophical theory of perfecting the system framework structure to solve the problem more scientifically.

Because physicists have also found the crux of physics. However, the various new theories are not standardized or even self-explanatory. There is an urgent need to revise and improve physics. Because Einstein said at the end of his life, he struggled for a lifetime. He really can't solve the problem of unifying who has unified four kinds of forces. I believe that some people will use wisdom to solve problems.

Although Chinese Taiji Diagram and Quantum Mechanics all want to solve the problem from microcosmic point of view, in fact, they use different methods. One is to draw Yin and Yang Fish of Taiji Diagram first to solve the problem of microcosmic movement of everything. For example, the description of the evolution process of the universe from scratch to origin, and the parity is not conservative.

Quantum mechanics and other theories do not first draw a picture of the process of formation, movement and development of things. For example, the problem of formation, movement and development of atoms is well-founded by unfolding from the graph. They first set the origin and parity conservation of the Big Bang. Neither does it establish a new philosophy of systematic framework and dynamic field. It is better for Buddhist Zen wisdom of the six ancestors to make a poem and Bodhi without trees or a mirror. There is nothing, where the dust. That is to say, according to his four sentences, the six ancestors Huineng did not set the background of the event. It is inevitable for ordinary people to understand the same results in the clouds and mists. of Shenxiu, the founder of Huineng's disciple Beizhong, is a Bodhi tree, the heart is like a mirror. Every now and then Lefo sleeve, do not make dust. It is easy for people of all levels to understand the meaning of four sentences after reading. Or it would be better to combine the two. Therefore, today's new philosophy and physics of establishing the dynamic field of the system framework structure is to unify all the physical theories correctly and to set up solutions to the problems of micro-motion.

If you use the name of all things or quantum to name the theory, you may not be able to express the purpose of the harmonious dynamic field physics theory of the Chinese Taiji map.

It is a rule of system framework structure theory consisting of unified field theory, ellipse diagrams and formulas. When you set up the problem solving, you can use the Newton, Einstein and other experts such as relativity, superstring theory, quantum theory and mechanics, or chemistry, mathematics, etc., to create a versatile theory to solve problems.

If you understand the meaning and flexible use of all the mathematics and formulas on the ellipse, according to the different problems in the development of the problem solving, first place it on the corresponding position on the ellipse, such as placing the planet in the gravity field. On the other hand, the centrifugal force of the spin of the planet is large, and the upwardly moving planet is not affected by the force of gravity friction, and the centrifugal force makes the expansion and evolution of the universe expand and expand.

If the mass of the spin of the planet is small, moving to the galaxy's spiral arm, such as the gravity surface field, is moving from the bottom to the top, and it is subjected to frictional force, gravity and gravitational energy. The upward velocity is the speed of the galaxy around the center of the galaxy. A density wave is formed. Moreover, when moving to the galaxy's spiral arm to the center of the field, the energy consumption is the slowest. When the star's inner core is pushed by the small centrifugal force, the heat is greatly reduced, and the ice on the planet produces a large winter ice age.

If the planet is placed on the other side of the elliptical map, it is known that the planet is accelerating from top to bottom on the galaxy's hips, and the mass of the planet is reproduced in the acceleration to more push friction. The converted light will be white, and it will evolve the heat of the big spring to the big summer. Or after solving the problem, you know which kind of force problem, if you use Newtonian energy conservation, or use the theory of relativity, superstring theory, quantum theory, etc. by Einstein and other experts, and mechanics or

$$\text{have } W = (1 - \eta^2)^Z W_0 \quad (1)$$

among them:

$$(1 - \eta^2)^Z = (1 - \eta^2)^{+Z} + (1 - \eta^2)^{-Z} + (1 - \eta^2)^{0Z} = \{1/2, 1\} \{0 \sim 1\}; \quad (2)$$

$$(1 - \eta^2)^Z = (1 - \eta^2)^{+Z} \cdot (1 - \eta^2)^{-Z} \cdot (1 - \eta^2)^{0Z} = \{1/2, 1\} \{0 \sim 1\}; \quad (3)$$

$$(1 - \eta^2)^{0Z} = (1 - \eta^2)^{+Z} + (1 - \eta^2)^{-Z} = (1 - \eta^2)^{+Z} \cdot (1 - \eta^2)^{-Z} \quad (4)$$

There is a formula (1) simultaneous equations can be obtained:

$$(1 - \eta^2)^Z = \{(0, 1/2, 1) \}^{(0, 1/2, 1)} Z; \quad (5)$$

According to the principle of parity non-conservation

$$(1 - \eta^2)^{+Z} \neq (1 - \eta^2)^{-Z},$$

chemistry, mathematics, etc. The formula, when it comes to solving problems, is more profound and self-explanatory. It is also possible to use the map to reproduce the developmental problems and results of the development of microscopic movements in the natural world, such as all things.

There are different methods for solving problems in physics, and the results are different. It also conforms to the narrative of the Taiji map harmony theory. Knowing that the material basis of the original celestial body is pushed by the force of that force forward, the principle mechanism is to transform the new enthalpy to replicate more energy or force, and the celestial body is from simple to complex. The low-level to advanced step-by-step evolution of the universe, the universe or the celestial body who is of great quality or proper method, who is a unified field in this living field. There is no immutability. They make a one-dimensional repetitive and orderly movement in time, and the space is the disorderly movement, the development of uneven speed, irregularity, and asymmetric elliptical motion. Explain that the universe's celestial bodies should start with the perfection of physical theory to solve the problem. Solved the physics theory, all the breakthrough problems have been solved, and it is known that the planets moving upwards as the center of the galaxy are affected by the frictional force on the field, the gravity of the centripetal force is consumed, and the star nucleus in the planet is pushed. When the friction is small, the reproduced rotation force is reduced, and the rotation speed is slowed down. Therefore, the moving planets form a density wave when they are moved around the ellipse. The light transformed by the friction on the planet is also darkened, which is shot at the center of the galaxy.

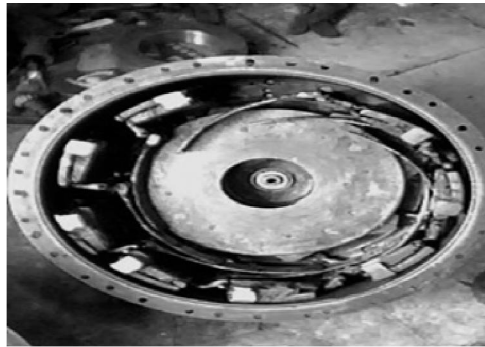
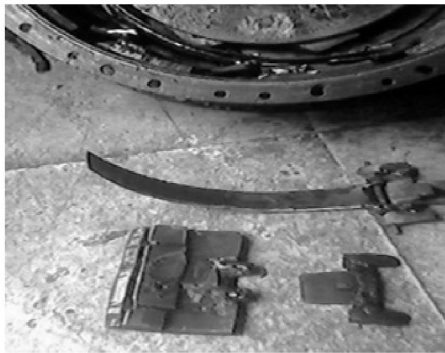
Now that the universe is like a balloon filled with a balloon, it is a balance of the physical model of Einstein. If the description of the non-conservative mathematical formula of Professor Wang Yiping of China is used, it is quoted from the "Point State Field and the Theory of Relativity" (the proceedings of the 8th International Conference on Computing Methods, 2017):

However, the formula (1) is equal. This is the immutability of energy. Under the condition of constant mass, the energy is asymmetrical after the change of the space of the mutation point. Where:  $W$  last, prediction condition;  $W_0$  initial condition;  $(1-\eta^2)^Z$  data, event change law;  $(1-\eta^2)^{+Z}$  data event convergence change;  $(1-\eta^2)^{0Z}$  data event mutation point or center point Or limit point;  $(1-\eta^2)^{-Z}$  data event diffusion change;

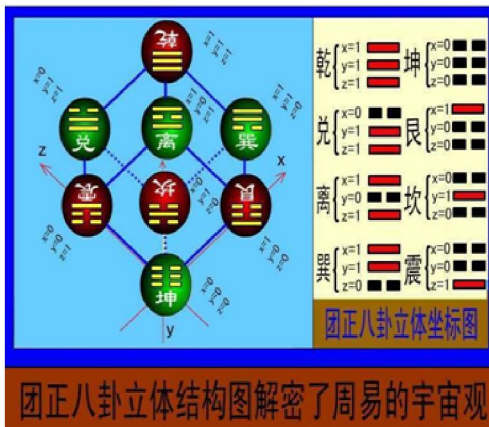
Taiji is expressed in terms of impotence (-) and haze (--), and is also the source of the eight sets of components in the "eccentric vortex engine", each group also has a long and two short accessories. With two short fitting haze (--) in different positions in the disc, it is convenient to be converted into different angles, forming a relatively stable eccentric cavity structure after falling in the disc. In this eccentric cavity, a spheroid is also stored. The spheroid of the spheroid is also the weight. The eccentricity is like the

force of the lower force on the lever arm, which is the work of the machine spin. When the body is accelerated by the force and the rotation is converted into a larger centrifugal force, the upward movement of the yttrium iron is inconvenient to contract and bend downward, forming a spherical sphere like the sunspot, and losing the eccentricity enclosed by the hanging iron ring. It evolved into a circular cavity, so the spheroids that do work in the cavity lose the force that the eccentricity can not replicate more energy. The machine will experience uneven speed reduction or one-time restart.

Taiji's impotence (-) is expressed as sputum or male, and yin (--) means that more energy is copied from the sputum during acceleration. It also refers to women, such as the uterus, which enables the fetus to be copied out of more cellular energy, and grows up day by day. It is scientifically consistent to describe the theory together. See below:



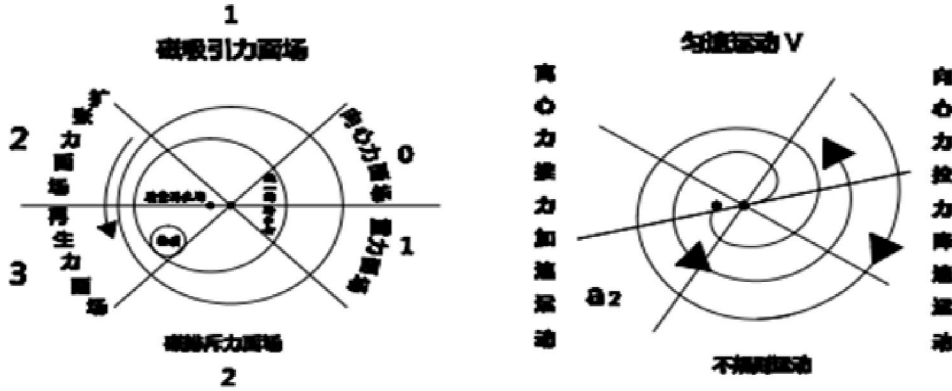
中国的太极八卦图图三、四表示什么意思呢？



The two pictures of Taiji gossip can not let people decipher the universe, such as the development trend of micro-motion problems such as life and death. See the following ellipse, the section is easy for

beginners to understand the use of arrows in the diagram and the revelation of words and mathematics to set the solution to the development of microscopic movements.

## 椭圆运动走势图 [见下图]



The two fish-like arrows in the Tai Chi Bagua map essentially represent centripetal force and centrifugal force. For example, if there is nothing in the creation of the universe, how can there be the force of movement and the evolution of everything? First of all, I will explain why these two figures and data are formed. These data are visualized and exported. For example, the airflow quality and the size of the airflow and the size and duration of the motion are affected by the magnitude and duration of the airflow. Under the conditions of conservation, the surface of the mass force surrounding the airflow is different. It is also a sign such as when the mass of the airflow moves on each field surface, and how much energy is reproduced.

As shown in the ellipse, the diffuse gas in the magnetic attraction surface field is turbulent in the air, and moves from top to bottom to the expansion force field and the regenerative force field. There is an acceleration centrifugal thrust when moving on these two field forces, so that the gas will be copied more energy and inertial force during acceleration. At the same time, since the gas makes more energy while moving, the other side makes less energy. Therefore, the gas crosses the magnetic repulsive force field, and moves upward toward the gravity field and the centripetal field. Since the gas is only supplemented by the inertial force without energy, it is consumed by the opposite frictional forces of the two fields and the energy of the weight of the object.

Therefore, this space is set as the gravity surface field, which means that when the centrifugal force is small, the motion of the object has a downward pressure, and the upward moving gas gradually

decreases and shrinks and bends for elliptical motion to reduce energy consumption. This elliptical motion is physically called centripetal motion, so that the centripetal force and the vortex suction are obtained, and the surrounding motion is accelerated toward the center. For example, table tennis falls from a height of one meter to a hard ground. After each rebound loses about 30 centimeters, but this height is still more than one centimeter high and the radius of the center is fifty centimeters. Therefore, the airflow vortexes each time with a continuously decreasing circulation over the center height.

For example, the gas moving to the upper part of the large outer ring does not move along the circle with more power consumption. The gas on the top surface of the circle is naturally divided into two sides to make a taper vortex, and the centrifugal force and the inertial force are obtained when the acceleration is obtained. Because the centrifugal force and the inertial force are the forces of the system, do not provide the force by itself. The airflow is far from the center on the side of the outer ring of the ring, so that this surface is expanded and expanded. When the airflow is accelerated to move to the other side, because there is no energy supplement, the airflow is only used less by the inertial force. The centripetal contraction is made to surround the center of the heart, and the airflow is close to the center, and the centripetal force is obtained. This time, the convoluted radial swirling motion constitutes a complete spherical shell. That is, a spherical shell composed of aggravated gas and small molecules. [It is the birth of a life function. ] Therefore, the large outer ring shell is made to the centripetal force.



Since the material is aggregated into a spherical shell, there are holes between the object and the object, so there are holes on the outer shell and holes inside. With holes, it plays three roles. On the one hand, it makes the temperature and pressure inside and outside the cavity of the shell different. On the other hand, it is like a machine with processing capability, which is continuously accelerated by the system to circulate around the center of the heart. The amount of force of the object is vortexed, which translates into the invisible suction, which is the strength of the field system that transforms the gravitation. [If a boy pursues a girl. The girl likes the boy to produce the gravitational force.] The airflow continuously accelerates the vortex around the center of the hole, and then the air molecules are arranged in a circle of force to form a small elliptical hole cavity field. [eg ginkgo a layer of leather coat outside the shell core].

As the scientists say, there are black holes in the center of the galaxy. [But when there is a turbulent flow in the air, the vortex accelerates around, and directly surrounds the hole into a black hole. In the beginning, the system is a system that replicates the energy of more centripetal motion in the vortex. For example, the airflow that accelerates the vortex into the cavity of the black hole and the small molecule dust that is later converted, like a snowball, is copied into a new cyclone or is copied by force to create a new one. On the planet, the accelerated centrifugal force is thrown out from the center of the black hole, causing the universe to expand and expand.]

In this small circle cavity, two fields are actually produced, one is centered on the centripetal vortex surrounding motion, and is called a unified field or like the earth's rotation pole. Or, like the function of the central government, when there is a contradiction in the energy of the moving objects on the field, it unifies the forces and inherited the role of intelligent energy.

One is centered on the centrifugal force of the system, called the center of the regeneration field where the energy is replicated. Or as the tilt of the earth.

This center-centered small circle hole field is the turning point and the abrupt point of the positive and negative field, indicating that it is a magical wisdom regeneration field combining mass and space. The centripetal force is small, the airflow into the center and the subsequent small molecule dust, etc., or vortex into a mass. With a large centripetal force, this field transforms faster vortex suction and gravity. Therefore, the object that accelerates into the center of the cavity is pushed out by the centrifugal force of the system. The co-flowing gas-heat flow has pushed the frictional heat to generate electricity and water molecules, and then the converted high-temperature and high-pressure

water molecules have been transformed into solid small molecules and evolved into everything. It is the evolutionary expression of Laozi's Tao Te Ching: "Daoshengyi, Yisheng2, Ersheng3, Sansheng Wanwu".

This eccentric cavity field is a universal processing field that is visually used to replicate more energy or more and regenerate new things. (But it can only copy a copy of more original quality, such as a file, as much as the copier function, it is impossible to change the original amount). All need to be able to move or transform new quality.

Or the mass of the field evolves into a three-dimensional spherical field like a container. Water molecules that enter the eccentric cavity of the spherical field are transformed into frictional heat and high temperature and high pressure into small molecules. They are also rotated by the system force into a new one. Small-molecule pellets, arranged in a circle of eccentric cavity. Just like the tree's annual ring or the subatomic neutron quark on the nucleus field, it is more powerful to speed up their copying of more energy. effect.

It has uniform quality and space-time standards. The greater the vibrancy of the field, or the greater the center of the structure of the centrifugal field, or the more energy or force copied by tools and weapons of large mass and space.

Conversely, when the field is small or the object is moved to the center of gravity field and the center is moved around the center of gravity, the less force is copied.

The mass and space-time in the eccentric cavity field in the figure can also be considered as the mass and space-time transformed by the frictional force pushed by the system. When it is moved to a certain field force surface by centrifugal force, the mass and space-time are larger. The more force is copied; the smaller the mass and time and space or the smaller the centrifugal force, the less force is copied. Therefore, its movement is affected by the surrounding environment, tools, weapons, etc., as well as its own quality. And it can't independently replicate its power to do its work.

Thirty years later, today, scientific instruments only photographed the black hole cavity center, and there is also a small cyclone group for centripetal force, and another two cyclone group scenes with larger centrifugal force. Prove the correctness of the two centers in my ellipse. Because Newton is two points of no movement or zero movement, there is also gravity. Rich is a circular motion of a little movement, with gravity.

My centripetal and centrifugation belong to two or more points of mutual reciprocating motion, in order to be copied more energy in the eccentric cavity,

so that things can be transformed or developed. However, the convergence and diffusion of English is easily misleading. If the balloon shrinks and expands at the same time to solve the problem, it cannot be justified. The actual gravitation comes from the suction and tension of the vortex.

The elliptical diagrams are designed with four speeds of uniform speed, acceleration, irregular speed and speed reduction. It can also mean that gravity, electromagnetic force, strong force and weak force are transformed. Or translate the expression of climate change in spring, summer, autumn and winter.

There are six different force fields on the ellipse, [eight kinds of doors, such as the door, dead door, etc.], magnetic attraction surface field, expansion force field, regenerative force field, magnetic repulsive surface field, gravity surface field, centripetal force field six process fields. There is no random (also relative number-relative comparison principle) different quality and space-time force field.

It is different from each blade that makes a vortex, it is a dynamic field. It is an image of changes in the development of things, such as life, babies, teenagers, youth, middle age, and strong years. Six spaces for the elderly. There are three types of large, medium and small in each space, such as work, rest, illness, and the amount of energy or force that is copied. Therefore, the amount of movement that is made to move is copied out and the energy is not conserved. It is also the natural law of life and death.

For example, the unified field center, the quality reproduction center and the gossip design two fish eyes to express the meaning. And I will have a variety of fields in large, medium and small, and I will remind you that the purpose of setting, solving, and discussing difficult problems is consistent.

For example, when calculating the maximum amount of 3 on a regenerative force surface field, accelerating the movement on the six kinds of fields and reproducing the energy time to solve the difficult problem. First of all, if you multiply 3 by 6, you will know that the reproduction output is 18, just like the number preset by the eight diagrams, you will know that the transformation is low-level. If the calculated re-multiplied unified field center mass is three and the re-multiplied mass regenerated field center mass is three, they duplicate the output 54 and 162 energies respectively. Say 162 hexagrams with eight diagrams. It can also be said that the hexagram bagua 64 only predicts heaven, earth and people. I can set up, understand and discuss all kinds of micro-movement problems such as birth, aging, illness and death.

We can also divide the 162 hexagrams into three parts like the eight trigrams. The 64 hexagrams of the first part of the eight trigrams remain unchanged. The 65 hexagrams of the second part of the eight trigrams

presuppose the evolution of the universe. The three hexagrams of the eight trigrams demonstrate the formation and movement of all things from the 100 hexagrams. For example, the element hydrogen in the preset atomic cycle is a hexagram. The problem of element quality, size and period in that next period can be separate. If the problem of people's birth, aging, illness and death is solved, the preset hexagram is male. Let's talk about whether he is young or old, whether he is working or sick. If you look up the preset figures, you can directly solve the problem accurately. Because the theory of unified field is to perfect the Eight Diagrams of Zhouyi.

This picture is structured like a Taiji three-dimensional painting structure. Or plant seed structure, or Wang Dekui expert three-spin theory model.

The yin and yang of the Taiji map can also refer to men and women, atoms, scorpions, good and evil. Cause and effect. Or a gravitational arm of a gene and a galaxy, a spiral arm that is made centrifugal. It can also be referred to as the name of the positive and negative of the centripetal force or the diffuse gas, the dark matter, the centrifugal force or the pushing friction to convert the new object, and the description of the flexible application on different occasions, collectively referred to as yin and yang. Otherwise, the universe does not initially have yin and yang such as men and women. Everything in nature is to push the frictional movements with two simple differences of centripetal force and centrifugal force, so that the amount of energy or force is copied from the unified field, and then it is transformed into gravitation, electromagnetic force, and strong. Force, weak force and other issues come.

The size of the large circle of the ellipse indicates the amount of the set, solution, and theory, such as the size of the centripetal force.

Moreover, when the event object is accelerated, it transforms into a stronger centrifugal force, and the next upward movement of the surface gradually increases with the centrifugal force. If the weight of the hanging iron is not increased in acceleration during the upward movement by the force, it is enhanced. The centrifugal force causes the hanging iron to not fall downward and concentrically bend and fall, and loses the centripetal nine. The hollow hole surrounded by the hanging iron ring expands into a large spherical cavity, and expands and expands upward and outward. When it is calculated, what time has evolved into a spherical shape. It is necessary to make a turn every time, at least to add 025 to the magnetic repulsive force field 2, the gravity field 1 plus 05, the centripetal field zero plus 075. The magnetic attraction field 1 plus 05, the expansion force field 2 plus 025 If the

regenerative force field is not added, it is known that the ball expands and expands to the large amount of the ball. Lose eccentric holes. The weight of the work object in the cavity, such as the ball, is also the weight. It is assumed to be 200 kg. The work of the downforce is made on the end of the eccentric lever arm, so that the large outer casing of the 1 mm diameter hollow shaft is 600 kg. The shaft diameter of the hollow shaft is only 10 cm in the bearing housing, and the inside of the hollow shaft is made of a hanging iron on the power plate, and the rotation of the shaft from the top to the bottom accelerates and presses on the middle section of the inner side of the large outer casing. The force on the machine accelerates the machine to 1000 revolutions per minute. In terms of the mass of the machine, the weight of the large outer casing is transformed into a larger inertial force. The eccentric machine is rotated in a larger inertial force. Although the frictional force is generated by electromagnetism, the inertial force unifies the four physical functions. force.

Since the work ball does not increase its weight during acceleration, the weight does not increase. The strong centrifugal force will not bend the core when it is moving upwards, and it will form a spherical internal cavity. Therefore, the work ball loses its eccentricity. If you lose your centripetal force, you can't be copied more weight by doing the weight of the ball, and you can make the power of the machine spin. Just as the inside of the atom slows down, the nucleus loses its powerful centrifugal force, and it transforms into a weak force toward the center. Quarks and the like also randomly make a centripetal motion and a static motion, and the energy they all are copied is greatly reduced. Also do not work for the atom.

Modern physics combines the quality and energy of objects to solve problems. I don't know if the gene replicates more cellular energy, and every cell activity and movement requires force to create more force in the cell and create conditions for transforming new qualities such as chemical elements.

For example, cancer patients have been suffering from long-term fatigue and life, and mental stress, the body is already very weak, and even a certain part of the operation disorders occur pain, urgent need to rest in bed for several months and increase nutrition, and please Chinese medicine traditional Chinese medicine symptomatic treatment to complement Kidney gas, etc., to send force to the cancer cells, the disease is slowly under the influence of its own immunity.

Because when every person or animal evolves into cancer cells in the body, it means that people have evolved to higher quality in the body. It requires more force or balance. It is like the development of a dark planet with a large mass to a red giant liquid ball.

Western medicine can treat cancer cells as a disease, excessive medical treatment such as radiotherapy and chemotherapy, surgery, and water to eliminate cancer cells. And long-term water hang, not the traditional Chinese medicine water is good for the body, because of the force of the water temperature of the hanging water and the body temperature difference, especially for people who are chronically ill, the arm sleeves when hanging water are held high, hanging water The arm has no clothes to keep warm, and it may produce a diffuse gas like a tornado. The cyclone flow from the high-altitude diffusion accelerates toward the center of the heart. The gas that enters the center of the vortex is aggregated into a mass, and the accelerated centrifugal force pushes the friction to the heart. The hot air whirlpool transforms the evolution of squally winds and thunderstorms and torrential rainstorms. The patient's body is subjected to hot and cold pushing and rubbing heat. The patient's body is transformed into low-grade fever, which will cause the patient to die.

Come and visit relatives and friends to visit patients. Make patients more energy in the body. Therefore, the survival rate of most cancer patients is low.

At the same time, it is necessary to solve the structural type of atomic photons, etc., which are called non-conservative dynamic fields. Such as the gradual slowdown in the atom. The small centrifugal force, the small molecules moving from the bottom to the outside, the subatomic from the bottom up, the contraction, bending, and velocity movement. The elements have different periodicities, and the electronic elements are reproduced by the centripetal force, which is pushed by the centrifugal force to transform into new masses such as protons. They increase the conversion again and again, and strengthen the atomic nucleus in the center of the atomic system and push it out by centrifugal force to accelerate the rotating motion.

Because there are several protons, subatoms, neutrons and quarks in the nucleus, they are pushed out by powerful centrifugal force to form a group force. They push one by one like the water in the sea is forced by the wind to form a big wave of ripples. A wave is more powerful than the thrust effect. At this time, the atomic nucleus and the protons and subatoms accelerate toward the front to push the high temperature and high pressure generated by the friction, which causes the internal nuclear power to be converted. [Nuclear force refers to the chemical force or the shell of all the protons, subatoms and neutrons and quarks in the nucleus, the explosive force of a strong high-temperature and high-pressure interlocking nuclear fusion reaction, or a shell of protons, subatoms, etc. The body is subjected to high

temperature and high pressure to cause an explosive force, and it hits another subatomic shell, etc., which enhances the explosive force and causes a large atomic explosion or a large collapse.

Therefore, a cluster of clusters in the inner cavity of the big bang and one sub-atoms, or a large collapsed atom, are scattered in the universe, making the universe from nothing to atoms, and then evolved to greater The evolution of dark planets and red giant liquid spheres.

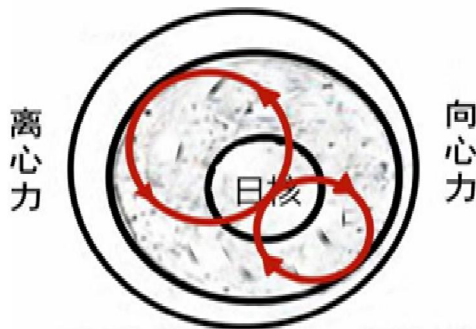
fragments and gas after the explosion are subjected to different forces and conditions, different new particles are reproduced when surrounded by the centripetal. And there is no real origin of the universe, there is a big bang. Therefore, there is no unified field theory for the real problem solving problem, and there is no Taiji figure to be able to justify it.

For example, if people do not work and eat better, they will not get sick or have death by energy conservation. Because people will breathe the gas and eat a variety of nutritious foods, the conversion of bleeding and gas upward movement is to slow down into the heart, is copied out of several white blood cells, accelerate the heart is pushed and rubbed to transform red blood cells. And the airflow inside the body, such as entering a small cavity between each cell and cell on the heart, and then reaching the center of the heart, assuming a heart diameter of 8 cm, the center radius of the heart should be 4 cm. When the airflow or small molecules are accelerated by centripetal force to the center of the heart and become like a single cell, it is estimated that the volume unfolds no more than one micron, and one percent is calculated to calculate the development circumference from each small cavity wall on the heart. At the center distance, at least the length can be divided into ten segments, and each segment of the airflow is surrounded by more small cells. And there are genes and so on that are busy replicating more cells and cancer cells.

More cells are stored in the body, making people grow taller and smarter. It is difficult to store so many cell capacities in various body tissues such as blood vessels. People are old and have special skin parts, and also shrink and lose elastic aging, and people are still younger. Those who copy more cells are arranged in the body. Crowded, the external air is blocked to transport the airflow material to the heart and lung through the pores on the skin, and the internally converted carbon dioxide gas is also difficult to diffuse into the body through the pores in time.

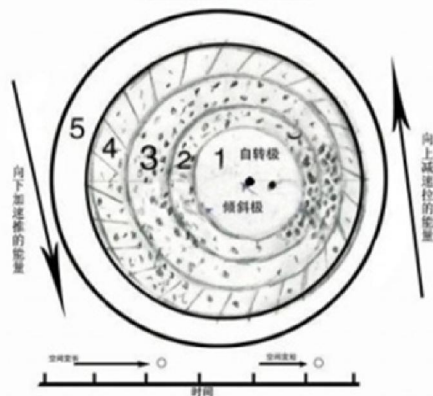
Therefore, it is impossible for people to be old-fashioned and not to die. You have to do the good things you can do. Because the long-term body is subjected to good things and multi-grinding airflow to push the frictional force, the iron in the blood of the body is transformed into magnetism, and the person who makes more good things and more is transformed into the electromagnetic wave energy. Therefore, electromagnetic waves are better than security personnel. For example, some people can predict things in a certain situation or can transform their consciousness in times of crisis, and come up with the best rescue method to avoid some accidents. The good thing is to remove the harmful gas in the body, and the

黑子8字形环绕



核聚变力来源

太阳构造示意图



此图是太阳的构造,各点表示微粒和原子分布,切线表示光球若干活动线  
1.日核以1500万度向2中介层向3对流层向4光球6000度外辐射对流,五  
色球也是以1500万度从外向内辐射对流从此改变原子质量。

The schematic diagram of the original solar structure and the movement of the sunspot is for reference only.

Of course, this theoretical number is my personal assumption. In reality, the rate of expansion is determined by the conditions of strength and time. Nowadays, the physics theory does not talk about these, and the results of scientific experiments are carried out with a powerful collider. Because the

electromagnetic wave can relieve the pain and even extend the life of the human body.

In addition, try to eat small foods such as sesame spinach and leeks, the volume of the copied cells is small. Solve the problem of system function expansion. Drink plenty of water or tea every day, and still have a good attitude to live. If you feel uncomfortable, don't sleep, immediately fall asleep or kneel to sleep, or even rest and rest your mind to relax the lesion or the navel for about twenty minutes.

If you are sick or sick, you can sing the Honghu Red Guards movie episode, pick up the dishes and sing songs, and the night of the military harbor. All of them sing or sing a few times in a row. After singing the song, you should close your eyes and sleep. Before going to bed or when waking up, turn over and sleep for twenty or thirty minutes. You can kneel on the pillow or rest on the edge of the bed. The nose and mouth will not absorb the dust on the bed, and the cervical vertebrae, lumbar vertebrae, heart, kidneys, etc. will be fast. Relaxed and discharged into the poisonous atmosphere. People immediately feel relaxed and happy. And the particularly long-lasting person's underwear elastic band is looser and better, it keeps the body's blood and blood unobstructed, and some unnamed pains on the body are even cured and the disease is good. From my health care, I will be less sick and prolong my life.

You see how clever the trees are growing for thousands of years. They always develop with funnels to overcome the conservation of energy, and make the trees grow thicker and taller. They also grow many branches. Branches and leaves, to expand the system function to live long life for thousands of years. When they find that the quality is still less after each conversion, copying more energy can't solve the problem of system function expansion. As a result, the number of cells replicated within the system is also decreasing. By reducing the cells, toxic gases such as carbon dioxide can be diffused out through the pores in time. This also removes some useless, aging, sick cells. The expansion of the system function greatly extends the life of the tree and lives for several years.”

Therefore, if the mass of the object in the eccentric cavity in the ellipse is used, such as being moved by centrifugal force to six different force fields on the ellipse, or indicating that a mass is moved to different conditions or time, the energy is reproduced. How many problems, you can also know that it will be subjected to that kind of force in the next step, so that it moves forward or backward, and the result is a different problem.

At the same time, since the energy is conserved, an event occurs on the ellipse and is also evolved during the unary repetitive motion, such as the occurrence of uniform motion, acceleration from top

to bottom, irregular motion, and lowering from bottom to top. The speed of the four kinds of surround motion, see the picture above.

In the respective movement speed environment, the amount of friction force pushed by the centripetal force and the centrifugal force diverges and transforms the amount of the total amount of material on the respective field strength surfaces. For example, when the earth is displaced by the plate on the ground, it moves on the mantle plate, and the core is rotated by centrifugal force to push the friction force on the inner wall of the mantle. When the force is moving at a uniform speed, it is combined with the sun light, so that the mantle heat escapes from the ground. Forming a spring temper with the atmospheric circulation, the core is pushed by the centrifugal force to accelerate the movement, and the friction heat is large, which transforms the summer heat. When the earth's nucleus is irregularly moving, it transforms the irregular autumn climate. When the ground core decelerates, it pushes the friction and heat, and the force is small, and it is produced in the winter cold air change. It has emerged that different plants have grown in different seasons, and those plants have evolved into multidimensional spaces such as old and sick.

In Zhou Yi's test, these four speeds are called four images and eight kinds of doors, sixty-four, etc. to set up a solution to predict the event. At the same time, the calculation method firstly counterclockwise from the bottom to the center of the heart, and then from the top down. Although the two are different, the basic meaning is consistent with the purpose of the statement. [It is like a person's internal organs. Without it, if you have a partner, you can't live and make a difference.

Moreover, there are also different sizes of different force fields, and how much energy is reproduced. Such as six inside the tomato. There are five small hole fields inside the cantaloupe. It is possible to copy the number of seeds and the amount of energy to pass on. The centripetal force is the death gate of the gossip, and generally will not be copied out of the good seeds, so that a small number of seeds can not bloom. Just as a human mother has raised a few children, some sons or daughters have been promoted to make a fortune, and some children have never been heard or even have children.

The Taiji map of Zhouyi's Tao Te Ching, which really points out the movement of everything, just like the chaotic crowd walking in the traffic road, it must be reduced according to the traffic rules of red light stop, green light line and walking up and down. The occurrence of traffic accidents. When some people who are as powerful or powerful have violated the traffic rules and forced the passage of traffic accidents

or contradictions, there are chapters to deal with the problem.

Therefore, if the regulations such as traffic rules are the same as the virtues of walking on the road, it is convenient to set questions and solve problems.

The reason why the Zhouyi Taiji figure is the structure of the three paintings is also from all things. Such as the shell skin of the seed, the meat in the middle, the core. Or the shell of the guide car, the middle of the work disk, the enlightenment of the central axis structure of the core, the ancient three-dimensional paintings represent the three main conditions of heaven, earth, people, or left, right, and right, to predict and solve the development of things. Good and bad movements.

The map of the unified field theory is more intuitive and complete than the Taiji, one is the size of the quantity, the second is the force, the third is the speed, the fourth is the time and the geographical condition. There are structural problems with special elaboration, such as how atoms form and move, and how they can replicate more energy and transform new masses. It is necessary to make a step-by-step reasoning and calculation, and then use the physics and chemistry to flexibly further solve the problem.

As you can see, the ancients flexibly used the Taiji map to develop their own cultural theory system according to their respective positions. For example, Zhou Wenwang used the 64 hexagrams of Zhouyi to describe the treatment of 64 major events. Six hexagrams will be used to describe the six main points or six stages of handling the matter. For example, Shi Gua talks about how to fight. The hexagram of litigation tells how to engage in a lawsuit. "Xun Gua" talks about how to protect wealth; "Dui Gua" tells how joy is safe. "Jing Gua" talks about how to meet the needs of the people; "Lu Gua" tells how to deal with the ministers around him. "Lingua" talks about how to monitor the world. "Kui Gua" and "Di Gua" talk about how to evaluate rebellion; "Ben Gua" talks about how to arm yourself; "Ge Gua" talks about how to make revolution; "Family Gua" tells how to manage the worldly wisdom of the wife and children. Just as Master Li Mingzhong, who studies gossip in Guangdong, said, it is Zhou Wenwang's political theory of ning emperors' statecraft that creatively stresses the establishment of a country and the governance of the world.

The Chinese Laozi moved the yin and yang in the Taiji to the law of the heart movement, and created the yin and yang gold, wood, water, fire, and earth five lines, to evolve the Taoist movement to the philosophical height of Taoism to join the world, and to emphasize the unity of contradictions. The fusion of opposites.

Confucius set up benevolence, righteousness, etiquette, wisdom and Confucianism by using the arrow of another Yangyu in Taiji as a centrifugal force. He was born with the highest realm of moral cultivation for the doctrine of the mean. Of course, in the process of consolidating stability and unity, there are also imperfections in their culture.

We should also combine Marx's science and culture to educate and reform people, such as ignoring the principles of benevolence, righteousness, propriety, wisdom and faith of Confucianism, and persuading Buddhism to kill, steal, prostitute, delusion and reward good and evil in the end. Taoism's long-term interests of gold, wood, water, fire and earth do not believe in those who do evil things, so they use Marx's rule of law dictatorship to perfect a unified culture of ideological management system of Co-governance of symptoms. Only in this period can all walks of life flourish and develop economy harmoniously and vigorously.

Confucius is a kind of yang fish that uses the centrifugal force to move the other in the Taiji. It creates the benevolence of righteousness, righteousness, rites, wisdom, and Confucianism. It is the highest state of moral cultivation for the doctrine of the mean. It is a pity that they generally look at the problem from a macro perspective and a micro perspective. The Taiji map of the voltmeter painting is not really understood physically. After not finding the source of the Tao, nor explaining the true meaning of the thing represented by the Taiji map, it cannot play a huge role in science and technology.

However, Marx's scientific culture, philosophy and politics are based on the unity of material. And for those who succeed in their struggle, there are two. There is no property in the world, and there is no godless soul after death. But politics is endless, and the original proletarians have fought successfully for leaders or wealthy people. Can we fight down? So his philosophy is based on metaphysics. A timely flower is not conducive to the consolidation of the regime. It can only be used in special time and special events.

So their culture is generally a macro, a micro analysis of the problem. Without a real physical understanding of the Taijitu painted by Fu Yi, the source of Tao has not been found, and the true full meaning of things expressed by Taijitu has not been explained, so it can not play a great role in science and technology.

This is because the picture is not accurate and the meaning of the expression is different.

It can't be seen at a glance like my two elliptical motion charts. When I evolve the microscopic movement of everything, what kind of force or condition is used to solve the problem. And they can't say why, they are not the people who invented the

"eccentric vortex engine", which can be forced to make predictions. Therefore, the unpredictable randomness of a thing's development often reduces the scientific nature of Taiji theory.

If Tai Chi diagrams are explained clearly like these two diagrams, social conflicts can also be reduced. Natural science may be advanced by 3,000 years, and the explanation of quark free particles should not have won the Nobel Prize for Americans. Even this little discovery deserves no Nobel Prize.

Although, a few decades ago, Professor Wang Xiyu of the Chinese Academy of Sciences struggled to study hard and finally used Taiji to solve the 162 problems in nature, and the explanation was very insightful. However, he did not really understand the yin and yang map of the sun, that is, the centrifugal force of the centripetal force in the ellipse diagram of the theory of the unified field to solve the problem, and the lack of strength could not be recommended.

Of course, the Taiji map is very esoteric, reminding the actual operation of the concept of dialectic, such as historical materialism, to reach the highest level of civilized law enforcement of spiritual civilization and material civilization, and less social contradictions. Because of the different ruling ideas and different policy requirements in each period, we can manage the country and develop productivity. And a few years later, whoever violates the highest cultural standards of today's Dao De, will be subject to the mandatory unification of the rule of law today. It's like an accident like a big explosion or a big collapse in the universe. Or a law like the one enacted by South Korea, which made the president a law-breaker after he took office. In particular, President Park Geun-hye, who was never married, she devoted herself to the cause of peace and development in South Korea. The political achievements in the ruling were indeed the previous laws. Sentenced to several years of imprisonment. It has damped the enthusiasm of people to make good achievements in their jobs.

I also saw an old woman cadre on the Internet being shot for embezzlement of hundreds of thousands of yuan more than 10 years ago, and she said that she did not want money. Therefore, I wrote to the Supreme People's Court to improve today's criminal law sentencing standards. Since the wages of newly liberated workers are only a few hundred yuan a year, and they suffer only 30,000 yuan or so for 50 years or so in a lifetime, they are still high-income, and the law enacted seeks to embezzle more than 100,000 yuan of public funds. If the circumstances are serious, it is legal to impose the death penalty.

Today, people's wages reach 10,000 yuan a year. According to the calculation of a lifetime of 50 years, they will reach about 500,000 yuan, and the amount of punishment will be quadrupled. That is, today, 2

million yuan can be sentenced to death. Otherwise, today's life is not as good as a dog's life. When I saw no reply, I went to the Supreme People's Procuratorate and wrote a letter to the National People's Congress Legal Committee. Since then, the death penalty has been reduced in the economic field. After two years, the Jiangsu Provincial High Court also wrote an article on the legal newspaper and sentenced the death penalty. standard.

Of course, we must further develop today, such as the beginning of the reform and opening up, such as 2000 years ago, because some factors have caused some people to break the law in the economic field, or if various land policies formulated by collective research encourage market development, such as pensions, etc. Linyi uses investment to use in local construction. Today is illegal. Therefore, people who treat such problems should treat the organization clearly and promptly withdraw the income of the dirty money. However, after 2000, the state has begun to manage this aspect, and it is illegal to commit crimes.

Therefore, the Taiji map advocates moral acquisition, rather than the power to gain access to the king. Because of good and evil, there is a report at the end.

As the French empire Napoleon said, "it is the incompetence of force... Ultimately, force is always conquered by thought.

Taiji said that it is to use culture and laws to calm people's centripetal power and self-reliance, such as the advanced and backward society, the poor and the rich, the country and the country, the contradiction between the interests of people and the difference in understanding, such as the parties directly Peace of mind and openness, you add to let me go to peace to solve all kinds of things, relying on force to liberate people's culture, the more complicated the problem is. As with the Mayans, the tribal leaders are fighting for nuclear weapons, and destroying the world also destroys itself.

Or understand the process of social development trends, such as the first, the development of society to the increase of contradictions, the polarization of the gap between the rich and the poor has increased, the poor will not rehabilitate without rice, will knock down the capitalists to defeat the landlord and divide the land. Second, the establishment of mutual aid group cooperatives. Third, the people's communeization implements a planned economy dominated by public ownership, and the harmonious society distributes unfair contradictions. 4. Due to the rise of the black horse enterprise of the social culture and education, the company has dug up the roots of the planned economy. At the same time, it has allowed the management or disorderly price to break the balance of currency exchange. Entering the contracting system

and auctioning and restructuring the public assets, it will generate new capitalists. Vigorously develop the market economy. 5. The gap between the rich and the poor has increased, the employment rate has decreased, and social contradictions have increased.

At this time, it is necessary to artificially use the wisdom to establish a new system of policies or measures to regulate its development, or to formulate guidelines and policies in accordance with the tradition of a country, to break the natural law of the development of the social cycle.

For example, the traditional system is centralized, just like the traffic police. When chaotic people walk in traffic roads, they must follow the traffic rules of red light stop, green light line and walking up and down, which greatly reduces the occurrence of traffic accidents. For the production and sales of industry and agriculture, the establishment of a planned economic system is like a firewall, so that our market economy can develop healthily and without being disrupted by the interference of the special international market economy. It also reconciles the contradictions in social development.

First, establish a unified system of leadership and management of system engineering from the central to local group-based agricultural modernization. First, pilot and gain experience, and gradually build a small and complete rural area for about three to five miles on rural land. A large farm or a large farm that requires life and service. For the implementation of unified purchase and marketing of their agricultural and sideline products, special seasonal agricultural products, all walks of life must fully support the sale of agricultural products, such as hard distribution to enterprises with good economic returns. If there are conditions, the farmer's harvested crops or fish and other agricultural and sideline products, on-site deep processing or construction of agricultural machinery and equipment repair plants and other small service projects, can also be unified by the provincial, municipal or township government agencies to plan and arrange, and manage those large farms Large-scale farms. With the township as the settlement unit, the farmers who work are divided by the production team leader. Accounting records, monthly basic wages and work clothes and other labor insurance benefits, the year-end township will unify the economic accumulation of the major farms or large farms Settlement. Including the state subsidy, and the annual income of the rural surplus earnings, the dividends before the Spring Festival are sent to each member. If farmers' wages and incomes are added, if some small quantities of agricultural and sideline products or slow-moving products are added, they are usually given preferential conditions for migrant workers, and the rural expenditure is small, so it is not lower than

the income of urban workers. Moreover, the elderly have pensions and unified tourism and cultural activities in the township. [Not including the scattered minority farmers who are backward and backward and not in the farm production]. In order to ensure that China's grain is based on domestic supply. Otherwise, the international situation will be raging, and if there is no supply of Chinese grain and oil, there will be a big famine and no food.

At the same time, people who can't find a suitable job in the city can also register at the farm or farm office to arrange employment, or go to the agricultural research institute to work. In principle, they will be assigned to the factory or enterprises to work in two years. The work order is calculated according to the registration time.

2. Establish a unified system of leadership and management of systems engineering from central to local group-type industrial modernization.

In the national system, the state-owned, collective, and individual-ownership nature is promoted to carry out market competition. Because the capitalist market economy is a one-to-one distribution of competition, and there is a lack of state-managed regulation, it is unfavorable for you to swindle and kill each other to adversely affect social stability and development. Our planned economy is to adjust the nature of the survival of the fittest, and to protect the healthy development of more enterprises. It is a factory that divides the people's normal needs for various products and foods, and distributes them to about 60% of planned economic enterprises. Production and sales of large farms and shopping malls. Hard distribution of sales to local government agencies at all levels, colleges and universities, military and public enterprises, enterprises and individuals, priority to purchase products and goods allocated by the plan of domestic products, to protect public assets and corporate profits, not subject to market currency exchange Loss or plunder.

Of course, the distribution of production indicators for industrial products is given to the planned economy enterprises, and the interests of various localities are taken into consideration, and the average distribution is to the planned economic enterprises. About 80% of the planned products are produced. They are also given more concessions. Policies such as tax exemption and priority loans allow more planned economy companies to do business, and steadily seek to develop some maintenance services in their own productivity, and to improve the welfare of employees. Those unplanned companies vigorously develop products and maintenance products that require less foreign economic and market demand. The winner is transferred to the planned distribution company. Inferior elimination is subject to planned



distribution. But it will always control the planned economy that fluctuates between 60% and 70%. It is God's intent.

At the same time, the Ministry of Civil Affairs has set up long-term practical projects for the public to serve the people. For example, the high-end elderly people using the home appliances, special mobile phone computers will access the Internet, and promote the use of new home appliances and Internet tools; Replacement of a batch of dangerous household appliances with more than ten years of age and transportation tools. Each of these jobs has a special unit in each county and city, and the technical personnel are divided according to the unit. The caravan service team is also a cultural propaganda team, taking turns to each residential area to be unified for everyone. For service days, use a new sharpener to sharpen the knife for each household. Or guide the elderly to learn to use the mobile phone to access the Internet. You can also replace the old household appliances and recycle them. Let the people of the whole country see and realize that this work is well carried out, and it is also conducive to the development of industrial and agricultural production.

Professional salaries, supported by local finance and beneficiary factories, can also be charged for repair costs.

As far as solving the major contradictions in development, we will refine some of the subsidiary policies and tactics in the two major systems projects of industry and agriculture. For example, if we stabilize the price and medical care and then formulate specific policies, we can implement them in a practical way. Once they are suitable, we will never innovate and formulate new policies. We will strengthen various management and market regulation so that our society can adapt and contradict each other. Great development. It will be able to solve the problem of unfair distribution, narrowing the gap between the rich and the poor, and especially solve the employment difficulties and ideological problems of talented students such as college students and veterans. It will consolidate the management of the centralized system, and will not be interfered or destroyed by the international market economy, so that the market economy will develop in a healthy and harmonious manner, and the people will live and work in peace and self-reliance in the world's national forest. The people's mountains and rivers are red.

Possibly, the current implementation of industrial and agricultural establishment of a unified system of leadership and management of system engineering from the central to local group modernization. Although there is a successful transformation experience at the beginning of liberation. However, taking into account various factors today, first select

one regional or one province to promote three individual enterprises, or establish a public-owned supermarket in each community to unify the sales of planned economy goods, and the accumulated profits can solve the community. Some other issues. After gaining various experiences and immediately spreading to the whole country, the success rate is high and the risk is small.

Although different periods and countries have different ethical standards, China's Taiji is the easiest way to uncover the micro-sports of all things and set a standard of morality to inspire and persuade people in social interaction. It is necessary to act in accordance with the rules of the Daoist Rule of the Dao. The relationship between the state and the state must be handled in accordance with the rules of the Daoist Rule of the Dao, to solve all the problems in the natural world, and to push the frictional force along the centripetal force and the centrifugal force to solve the problem. That is to say, if you are in power, you can follow the handling of 64 major events that Zhou Wenwang tells. The problem of macro-distribution is based on the idea that Taoism established by Laozi to enter the WTO is inaction, and it is necessary to emphasize the unity of contradictions and the integration of opposites. In dealing with ideological education, it is necessary to establish the benevolence, righteousness, rites, wisdom, and Confucianism founded by Confucius and others. It is a way of being a mediocrity, and a culture of killing, stealing, obscenity, jealousy, and wine in Buddhism. Education in ideology, morality and culture is conducive to the stability and unity of society. Therefore, Chinese Taiji culture is a moral culture.

But today the people of the world have too little research and application and development of China's Taiji moral culture, and the world is not very stable.

Throughout the history of human development and the history of understanding the universe, new theoretical perspectives with the characteristics of the times have emerged in various periods. However, with the advancement of social science and technology, these theoretical views have been replaced by epoch-making new understandings. However, in the history of human cognition, the only long-lasting and with the development of modern science and technology, more and more prove that its deep mystery is set in one truth, only China's "Taiji" has been applied to the past and present and future with moral culture. Therefore, "Tai Chi" is by no means a mere study of divination and prediction. In fact, it is the total knowledge and total cosmology that covers all fields of heaven and earth. The essence of "Taiji" is the centripetal force of centripetal force or the use of the number of cosmic yin and yang fields (prime), the unity of opposites of alternating transformation.

In the future, we can also use the Theory of Unified Fields to perfect the Taiji system theory, let people open the door of wisdom, and build a more dynamic system of dynamic field theory such as reinforced concrete continuous connection, and physics, mathematics and astronomy. Wait for the science building to benefit mankind.

For example, I use the ellipse diagram of the problem in the "The Theory of Unifying Fields" to explain the origin and rotation evolution of the universe, the study of seismic chemistry, the study of atomic chemistry, and the carbon dioxide is not the culprits of climate warming. Why does the ice age come irregularly, the cause of the ring structure of the cosmic microwave background radiation, the request to stop using chemoradiotherapy to treat leukemia, cancer and AIDS, why genes can only replicate energy, the theory of 'soul', and publishing Taiji words The world science book is published in the American academic field of science. [Http://www.sciencepub.net/academia/aa2012suppl](http://www.sciencepub.net/academia/aa2012suppl).

In particular, he requested to stop using chemoradiotherapy to treat leukemia, cancer and AIDS papers. The China Natural Journal agreed to publish it, but it was required to pay a total of 4,200 yuan for the page fee and the editorial fee. After I went to the British natural journals that did not invest money, it was not easy to receive the New York editors to improve the recommendation and not to submit the manuscript.

In addition, I wrote 162 kinds of data when I modified the [Eight Eight Diagrams] paper on January 2, 2015. The old professor Wang Xiyu solved 162 problems. I seem to be jealous before 1968. I don't know where his basis came from. There are only 162 problems in the world.

Otherwise, the future energy crisis and nuclear war will inevitably advance. Even those who leave the ground because of the warmth of the climate will come back to the new ice age to play back the carbine, and then go to the ground to destroy the nuclear facilities. It is an alien masterpiece if the flying saucer can escape the gravity of the earth.

Therefore, the solution to Taiji is heavy and urgent, and it must not be like Darwin's theory of evolution. It is also necessary to make Taiji close to civilians. Not to be like the idealism and materialism, only to define the spiritual world and the material world as the first nature, not to talk about the development of things in the movement, the relationship between them is interactive and adaptable, forming a unified field of civilization. Sexual mathematics to solve problems. Because people are surrounded by a large amount of intangible forces such as the rule of law and ethics, it is like a unified field. If we only go to the bank to do bad things according to

the unity of the spiritual world of the spiritual world, it will also harm people for a lifetime. To unify the field is to ask people to consider the issue of right and wrong, and to identify the consequences of the final interests. It is necessary to reduce various social contradictions and crimes and contribute to the great peace and prosperity of the world.

Because my research is very busy, and I understand the limitations of culture and culture, I will not use the computer to search for writing materials to help me write. I am convinced that this part of the Taiji issue is convinced that cultural experts in various fields in China will be like Laozi. Confucius created a more complete new science and culture to benefit human life.

For reference only, it is not appropriate to criticize and correct.

#### **About the Author:**

Sun Chunwu (1948-), male (Han), address: Xiuxiu Garden, Xihu Town, Yangzhou City, Jiangsu Province, China 5008  
Mainly engaged in the research of natural sciences, etc.;  
Name of the unit, Yangzhou Huading Electric, Jiangsu Province, China  
Email: [yzscw0514@163.com](mailto:yzscw0514@163.com)  
qq number: 458669609;  
WeChat ID: 17306271565

Comments by WeChat Group Masters A00 inf Natural Force Universe Science 423 Pipe Master Review @ Sun Chunwu Your Understanding of Tai Chi Is True or Understanding! Xu Zhou Han Chief Engineer Comments Yes, I really benefited a lot from watching it. No one understands Tai Chi diagram so deeply, and it can be closely linked to the current social phenomenon. Can do so is sun Lao!



**References:**

1. Zhou Yiquan's book [Wanju Publishing Company].
2. Wang Xiyu solves 162 problems.
3. Science and Technology Information, No. 18, 2007, page 5-6, an ellipse in the comprehensive discussion of unified field theory.
4. Daqian World Issue ISBN7-436-39240-9 [The disappearing technology civilization] and 30 years later, after the Spring Festival in 2007, I saw the Qimen armor book written by Hong Kong people, which added wisdom and strength.
5. The truth of "Book of Changes", blogger Li Mingzhong teacher.
6. "Magic Morse Code and Ancient Essays" Zhao Yuwen Wang Dekui expert research paper.
7. In 2012, the American Journal of Natural Science "Taiji Story of the World" novels and articles published in the academic field arena. <Http://www.sciencepub.net/academia/aa2012supp1>
8. China's Wang Yiping's mathematical formula description, cited in "Point State Field and Relativistic Structure" (2017 Eighth International Conference on Methods of Computing Methods).

4/25/2020