

# Indirect Boundary Element Method for Calculation of Compressible Flow past a Symmetric Aerofoil with Constant Element Approach

Muhammad Mushtaq\* & Nawazish Ali Shah

Department of Mathematics, University of Engineering & Technology Lahore – 54890, Pakistan

Corresponding Author, e-mail: [mushtaqmalik2004@yahoo.co.uk](mailto:mushtaqmalik2004@yahoo.co.uk)

## Abstract:

In this paper, an indirect boundary element method is applied to calculate the compressible flow past a symmetric aerofoil. The velocity distribution for the flow over the surface of the symmetric aerofoil has been calculated using constant boundary element approach. To check the accuracy of the method, the computed flow velocity is compared with the exact velocity. It is found that the computed results are in good agreement with the analytical results.

**Keywords:** Indirect boundary element method, Compressible flow, Velocity distribution, Symmetric aerofoil, Constant element.

## 1. Introduction

In the past, many numerical techniques such as finite difference method, finite element method, and boundary element method etc. came into being making possible to solve various practical fluid flow problems. Boundary element method has received much attention from the researchers due to its various advantages over the other domain methods. One of the advantages is that with boundary elements one has to discretize only the surface of the body, whereas with domain methods it is essential to discretize the entire region of the flow field. Moreover, this method is well-suited to problems with an infinite domain. The boundary element method can be classified into two categories i.e. direct and indirect. The direct method takes the form of a statement which provides the values of the unknown variables at any field point in terms of the complete set of all the boundary data. On the other hand, the indirect method utilizes a distribution of singularities over the boundary of the body and computes this distribution as the solution of integral equation. The equation of indirect method can be derived from that of direct method. (Lamb, 1932; Milne-Thomson, 1968, Kellogg, 1929 and Brebbia and Walker, 1980). The indirect method has been used in the past for flow field calculations around arbitrary

bodies (Hess and Smith, 1967; Hess, 1973, Muhammad, 2008, Luminata, 2008, Mushtaq, 2009). Most of the work on fluid flow calculations using boundary element methods has been done in the field of incompressible flow. Very few attempts have been made on flow field calculations using boundary element methods in the field of compressible flow. In this paper, the indirect boundary element method has been used for the solution of compressible flows around a symmetric aerofoil.

## 2. Mathematical Formulation

We know that equation of motion for two – dimensional, steady, irrotational, and isentropic flow is

$$(1 - Ma^2) \frac{\partial^2 \Phi}{\partial X^2} + \frac{\partial^2 \Phi}{\partial Y^2} = 0 \quad (1)$$

where Ma is the Mach number and  $\Phi$  is the total velocity potential of the flow. Here X and Y are the space coordinates.

Using the dimensionless variables,  $x = X$ ,  $y = \beta Y$ , where  $\beta = \sqrt{1 - Ma^2}$ , equation (1) becomes

$$\frac{\partial^2 \Phi}{\partial x^2} + \frac{\partial^2 \Phi}{\partial y^2} = 0$$

$$\text{or } \nabla^2 \Phi = 0 \quad (2)$$

which is Laplace's equation.

### 3. Symmetric Aerofoil

The Joukowski transformation

$$z = \zeta + \frac{a^2}{\zeta} \quad (3)$$

transforms the circle shown in figure (1) in the  $\zeta$  – plane on to symmetric aerofoil in the  $z$ -plane.

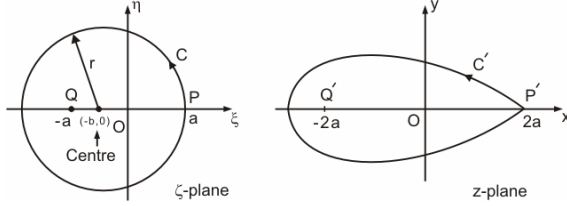


Figure 1

### 4. Flow Past a Symmetric Aerofoil

Consider the flow past a symmetrical aerofoil and let the onset flow be the uniform stream with velocity  $U$  in the positive direction of the  $x$  – axis as shown in figure (2) .

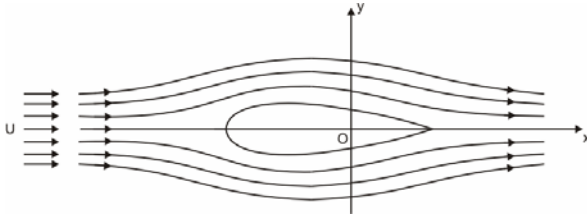


Figure 2: Flow past a symmetric aerofoil.

#### Exact Velocity

The magnitude of the exact velocity distribution over the boundary of a symmetric aerofoil is given by Chow[3] as

$$V = U \left| \frac{1 - \left(\frac{r}{z-b}\right)^2}{1 - \left(\frac{a}{z}\right)^2} \right|$$

where  $r$  = radius of the circular cylinder,  
 $a$  = Joukowski transformation constant  
 and  $b = a - r = x$ -coordinates of the centre of the circular cylinder

In Cartesian coordinates, we have

$$V = U \frac{\sqrt{\left[ \{(x-b)^2 + y^2\}^2 - r^2 \{(x-b)^2 - y^2\} \right]^2 + 4r^4 y^2 (x-b)^2}}{\left[ (x-b)^2 + y^2 \right]^2} \times \frac{\sqrt{\left[ (x^2 + y^2)^2 - a^2 (x^2 - y^2) \right]^2 + 4a^4 x^2 y^2}}{\left( x^2 + y^2 \right)^2 - 2a^2 (x^2 - y^2) + a^4}$$

### Boundary Conditions

Now the condition to be satisfied on the boundary of a symmetric aerofoil is

$$\vec{V} \cdot \hat{n} = 0 \quad (4)$$

where  $\hat{n}$  is the unit normal vector to the boundary of the aerofoil .

Since the motion is irrotational

$$\vec{V} = -\nabla \Phi$$

where  $\Phi$  is the total velocity potential . Thus equation (4) becomes

$$(-\nabla \Phi) \cdot \hat{n} = 0$$

$$\text{or } \frac{\partial \Phi}{\partial n} = 0 \quad (5)$$

Now the total velocity potential  $\Phi$  is the sum of the perturbation velocity potential  $\phi_{s.a}$  where the subscript  $s.a$  stands for symmetric aerofoil and the velocity potential of the uniform stream  $\phi_{u.s}$  .

$$\text{i.e. } \Phi = \phi_{u.s} + \phi_{s.a} \quad (6)$$

$$\text{or } \frac{\partial \Phi}{\partial n} = \frac{\partial \phi_{u.s}}{\partial n} + \frac{\partial \phi_{s.a}}{\partial n} \quad (7)$$

From equations (5) and (7) , we get

$$\frac{\partial \phi_{s.a}}{\partial n} + \frac{\partial \phi_{u.s}}{\partial n} = 0$$

$$\text{or } \frac{\partial \phi_{s.a}}{\partial n} = -\frac{\partial \phi_{u.s}}{\partial n} \quad (8)$$

But the velocity potential of the uniform stream , given in Milne – Thomson [ 6 ], Shah [ 7 ], is

$$\phi_{u.s} = -Ux \quad (9)$$

$$= -U \frac{\partial x}{\partial n}$$

$$= -U (\hat{n} \cdot \hat{i}) \quad (10)$$

Thus from equations (8) and (10), we get

$$\frac{\partial \phi_{s.a}}{\partial n} = U (\hat{n} \cdot \hat{i}) \quad (11)$$

Now from the figure (3)

$$\vec{A} = (x_2 - x_1) \hat{i} + (y_2 - y_1) \hat{j}$$

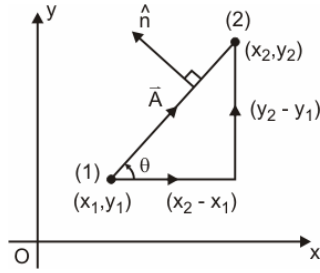


Figure 3

Therefore the unit vector in the direction of the vector  $\vec{A}$  is given by

$$\vec{A} = \frac{(x_2 - x_1)\hat{i} + (y_2 - y_1)\hat{j}}{\sqrt{(x_2 - x_1)^2 + (y_2 - y_1)^2}}$$

The outward unit normal vector  $\hat{n}$  to the vector  $\vec{A}$  is given by

$$\hat{n} = \frac{-(y_2 - y_1)\hat{i} + (x_2 - x_1)\hat{j}}{\sqrt{(x_2 - x_1)^2 + (y_2 - y_1)^2}}$$

Thus  $\hat{n} \cdot \hat{i} = \frac{(y_1 - y_2)}{\sqrt{(x_2 - x_1)^2 + (y_2 - y_1)^2}}$  (12)

From equations (11) and (12), we get

$$\frac{\partial \phi_{s.a}}{\partial n} = U \frac{(y_1 - y_2)}{\sqrt{(x_2 - x_1)^2 + (y_2 - y_1)^2}} \quad (13)$$

Equation (13) is the boundary condition which must be satisfied over the boundary of a symmetric aerofoil.

**Equation of Indirect Boundary Element Method**

The equation of indirect boundary element method for two-dimensional flow in the case of doublet alone [Muhammad,2008 & Mushtaq, 2009] is :

$$-c_i \Phi_i + \frac{1}{2\pi} \int_{\Gamma-i} \Phi \frac{\partial}{\partial n} \left( \log \frac{1}{r} \right) d\Gamma = -(\phi_{u.s})_i \quad (14)$$

where  $c_i = 0$  when 'i' is within  $R'$   
 $= 1$  when 'i' is within  $R$   
 $= \frac{1}{2}$  when 'i' is on  $S$  and  $S$  is smooth

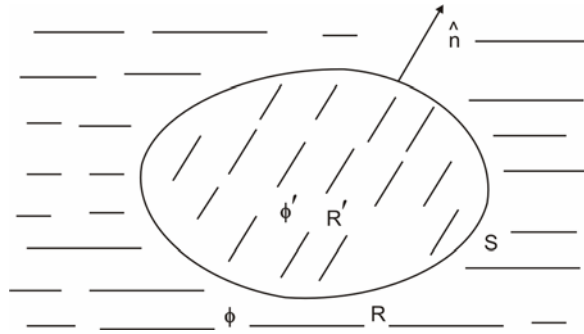


Figure 4

**Matrix Formulation**

Let the boundary of the region be discretized into  $m$  elements, then equation (14) can be written as

$$-c_i \Phi_i + \sum_{j=1}^m \left[ \frac{1}{2\pi} \int_{\Gamma_j-i} \Phi \frac{\partial}{\partial n} \left( \log \frac{1}{r} \right) d\Gamma \right] = -(\phi_{u.s})_i \quad (15)$$

where  $\Gamma_j-i$  is the length of the element 'j' excluding the point 'i'.

For the constant boundary element approach, the value of  $\Phi$  is assumed to be constant on each element and equal to the values at the mid-node of the element. The number of nodes in this case will be the same as the number of elements  $m$ . On each element the variable  $\Phi$  is specified as a boundary condition. As  $\Phi$  is constant over each element it can be taken out of the integral. This gives

$$-c_i \Phi_i + \sum_{j=1}^m \left[ \frac{1}{2\pi} \int_{\Gamma_j-i} \frac{\partial}{\partial n} \left( \log \frac{1}{r} \right) d\Gamma \right] \Phi_j = -(\phi_{u.s})_i \quad (16)$$

Equation (16) applies for a particular node

'i' and the integrals  $\frac{1}{2} \int_{\Gamma_j-i} \frac{\partial}{\partial n} \left( \log \frac{1}{r} \right) d\Gamma$

relate the node 'i' with the element 'j' over which integrals are evaluated. These integrals will be denoted by  $\hat{H}_{ij}$ . Hence equation (16) can be written as

$$-c_i \Phi_i + \sum_{j=1}^m \hat{H}_{ij} \Phi_j = -(\phi_{u.s})_i \quad (17)$$

$$\text{or } \sum_{j=1}^m H_{ij} + \phi_\infty = -(\phi_{u.s})_i \quad (18)$$

$$\text{where } H_{ij} = \begin{cases} \hat{H}_{ij} & \text{when } i \neq j \\ \hat{H}_{ij} - c_i & \text{when } i = j \end{cases}$$

When all nodes are taken into consideration, equation (18) is  $M \times (M + 1)$  system of equations. Which can put in the matrix form in case of constant element as

$$[H] \{U\} = \{R\} \quad (19)$$

where as usual  $[H]$  is a matrix of influence coefficients,  $\{U\}$  is a vector of unknown total potentials  $\Phi_i$  and  $\{R\}$  on the R.H.S. is a known vector whose elements are the negative of the values of the velocity potential of the uniform stream at the nodes on the region of the body. Note that  $\{U\}$  in equation (19) has  $(M + 1)$  unknowns  $\Phi_1, \Phi_2, \dots, \Phi_m, \phi_\infty$ . To solve precisely this system of equations, the value of  $\Phi$  at some position must be specified. For convenience  $\phi_\infty$  is chosen as zero. Thus  $M \times (M + 1)$  system reduces to an  $M \times M$  system of equations which can be solved as before but now the diagonal coefficients of  $[H]$  will be found by

$$H_{ii} = - \sum_{\substack{j=1 \\ j \neq i}}^m H_{ij} - 1 \quad (20)$$

### Process of Discretization

Now for the discretization of the boundary of the symmetric aerofoil, the coordinates of the extreme points of the boundary elements can be generated within computer programme using Fortran language as follows:

Divide the boundary of the circular cylinder into  $m$  elements in the clockwise direction by using the formula.

$$\theta_k = \left[ (m + 3) - 2k \right] \frac{\pi}{m}, \quad k = 1, 2, \dots, m \quad (21)$$

Then the extreme points of these  $m$  elements of circular cylinder are found by

$$\xi_k = -b + r \cos \theta_k$$

$$\eta_k = r \sin \theta_k$$

Now by using Joukowski transformation in equation (3), the extreme points of the symmetric aerofoil are

$$x_k = \xi_k \left( 1 + \frac{a^2}{\xi_k^2 + \eta_k^2} \right)$$

$$y_k = \eta_k \left( 1 - \frac{a^2}{\xi_k^2 + \eta_k^2} \right)$$

where  $k = 1, 2, \dots, m$ .

The coordinates of the middle node of each boundary element are given by

$$\left. \begin{aligned} x_m &= \frac{x_k + x_{k+1}}{2} \\ y_m &= \frac{y_k + y_{k+1}}{2} \end{aligned} \right\} \quad k, m = 1, 2, \dots, n \quad (22)$$

and therefore the boundary condition (13) in this case takes the form

$$\frac{\partial \phi_{s.a}}{\partial n} = U \frac{(y_1)_m - (y_2)_m}{\sqrt{[(x_2)_m - (x_1)_m]^2 + [(y_2)_m - (y_1)_m]^2}} \quad (23)$$

The following tables show the comparison of computed and analytical velocity distribution over the boundary of a symmetric aerofoil for 8, 16, 32, and 64 constant boundary elements.

**Table 1: The comparison of the computed velocity with exact velocity over the boundary of a symmetric aerofoil using 8 constant boundary elements.**

ELEMENT	X	Y	$R = \sqrt{X^2 + Y^2}$	VELOCITY	EXACT VELOCITY
1	-1.87	.36	1.91	.83110E+00	.75969E+00
2	-1.36	.86	1.61	.20042E+01	.18480E+01
3	-.64	.86	1.07	.19913E+01	.18561E+01
4	-.13	.35	.38	.82093E+00	.68955E+00
5	-.13	-.35	.38	.82093E+00	.68955E+00
6	-.64	-.86	1.07	.19913E+01	.18561E+01
7	-1.36	-.86	1.61	.20042E+01	.18480E+01
8	-1.87	-.36	1.91	.83109E+00	.75969E+00

**Table 2: The comparison of the computed velocity with exact velocity over the boundary of a symmetric aerofoil using 16 constant boundary elements.**

ELEMENT	X	Y	$R = \sqrt{X^2 + Y^2}$	VELOCITY	EXACT VELOCITY
1	-2.04	.21	2.05	.39880E+00	.38702E+00
2	-1.88	.59	1.97	.11354E+01	.11044E+01
3	-1.59	.88	1.82	.16984E+01	.16594E+01
4	-1.21	1.03	1.59	.20013E+01	.19661E+01
5	-.80	1.03	1.30	.19967E+01	.19716E+01
6	-.42	.87	.96	.16825E+01	.16645E+01
7	-.12	.57	.58	.10924E+01	.10750E+01
8	.05	.19	.20	.39734E+00	.26843E+00
9	.05	-.19	.20	.39734E+00	.26843E+00
10	-.12	-.57	.58	.10924E+01	.10750E+01
11	-.42	-.87	.96	.16825E+01	.16645E+01
12	-.80	-1.03	1.30	.19967E+01	.19716E+01
13	-1.21	-1.03	1.59	.20013E+01	.19661E+01
14	-1.59	-.88	1.82	.16984E+01	.16594E+01
15	-1.88	-.59	1.97	.11354E+01	.11044E+01
16	-2.04	-.21	2.05	.39880E+00	.38702E+00

**Table 3: The comparison of the computed velocity with exact velocity over the boundary of a symmetric aerofoil using 32 constant boundary elements.**

ELEMENT	X	Y	$R = \sqrt{X^2 + Y^2}$	VELOCITY	EXACT VELOCITY
1	-2.09	.11	2.09	.19744E+00	.19455E+00
2	-2.05	.32	2.07	.58470E+00	.57600E+00
3	-1.97	.51	2.03	.94941E+00	.93637E+00
4	-1.85	.69	1.97	.12775E+01	.12622E+01
5	-1.70	.84	1.89	.15562E+01	.15410E+01
6	-1.52	.96	1.80	.17748E+01	.17620E+01
7	-1.32	1.04	1.68	.19247E+01	.19163E+01
8	-1.11	1.08	1.55	.20002E+01	.19969E+01
9	-.90	1.08	1.40	.19981E+01	.19999E+01
10	-.69	1.04	1.24	.19182E+01	.19236E+01
11	-.49	.95	1.07	.17632E+01	.17695E+01
12	-.31	.83	.89	.15384E+01	.15417E+01
13	-.16	.68	.70	.12514E+01	.12461E+01
14	-.04	.49	.49	.91024E+00	.88934E+00
15	.06	.28	.29	.52632E+00	.47740E+00
16	.12	.09	.15	.23223E+00	.15912E+00
17	.12	-.09	.15	.23223E+00	.15912E+00
18	.06	-.28	.29	.52632E+00	.47740E+00

19	-.04	-.49	.49	.91024E+00	.88934E+00
20	-.16	-.68	.70	.12514E+01	.12461E+01
21	-.31	-.83	.89	.15384E+01	.15417E+01
22	-.49	-.95	1.07	.17632E+01	.17695E+01
23	-.69	-1.04	1.24	.19182E+01	.19236E+01
24	-.90	-1.08	1.40	.19981E+01	.19999E+01
25	-1.11	-1.08	1.55	.20002E+01	.19969E+01
26	-1.32	-1.04	1.68	.19248E+01	.19163E+01
27	-1.52	-.96	1.80	.17748E+01	.17620E+01
28	-1.70	-.84	1.89	.15562E+01	.15410E+01
29	-1.85	-.69	1.97	.12774E+01	.12622E+01
30	-1.97	-.51	2.03	.94941E+00	.93637E+00
31	-2.05	-.32	2.07	.58471E+00	.57600E+00
32	-2.09	-.11	2.09	.19744E+00	.19455E+00

**Table 4: The comparison of the computed velocity with exact velocity over the boundary of a symmetric aerofoil using 64 constant boundary elements.**

ELEMENT	X	Y	$R = \sqrt{X^2 + Y^2}$	VELOCITY	EXACT VELOCITY
1	-2.10	.05	2.10	.98527E-01	.97672E-01
2	-2.09	.16	2.10	.29450E+00	.29110E+00
3	-2.07	.27	2.09	.48756E+00	.48207E+00
4	-2.04	.37	2.07	.67617E+00	.66862E+00
5	-2.00	.47	2.05	.85796E+00	.84901E+00
6	-1.95	.56	2.03	.10316E+01	.10216E+01
7	-1.89	.65	2.00	.11952E+01	.11847E+01
8	-1.82	.74	1.96	.13473E+01	.13367E+01
9	-1.74	.81	1.92	.14863E+01	.14763E+01
10	-1.66	.88	1.88	.16109E+01	.16021E+01
11	-1.57	.94	1.83	.17200E+01	.17127E+01
12	-1.47	.99	1.77	.18123E+01	.18072E+01
13	-1.37	1.03	1.72	.18871E+01	.18844E+01
14	-1.27	1.06	1.66	.19437E+01	.19435E+01
15	-1.17	1.08	1.59	.19813E+01	.19839E+01
16	-1.06	1.09	1.52	.19997E+01	.20051E+01
17	-.95	1.09	1.45	.19986E+01	.20065E+01
18	-.84	1.08	1.37	.19781E+01	.19882E+01
19	-.74	1.06	1.29	.19382E+01	.19501E+01
20	-.63	1.03	1.21	.18794E+01	.18922E+01
21	-.53	.98	1.12	.18022E+01	.18151E+01
22	-.44	.93	1.03	.17072E+01	.17193E+01
23	-.35	.87	.94	.15952E+01	.16052E+01
24	-.27	.80	.85	.14672E+01	.14739E+01
25	-.19	.72	.75	.13243E+01	.13260E+01
26	-.12	.64	.65	.11677E+01	.11624E+01
27	-.06	.55	.55	.99845E+00	.98398E+00
28	-.00	.45	.45	.81795E+00	.79117E+00
29	.04	.34	.34	.62778E+00	.58472E+00
30	.08	.23	.24	.43184E+00	.36984E+00
31	.12	.12	.17	.24912E+00	.18920E+00
32	.16	.03	.16	.50082E+00	.18610E+00
33	.16	-.03	.16	.50082E+00	.18610E+00
34	.12	-.12	.17	.24911E+00	.18920E+00
35	.08	-.23	.24	.43183E+00	.36984E+00
36	.04	-.34	.34	.62779E+00	.58472E+00

37	-.00	-.45	.45	.81795E+00	.79117E+00
38	-.06	-.55	.55	.99845E+00	.98398E+00
39	-.12	-.64	.65	.11677E+01	.11624E+01
40	-.19	-.72	.75	.13243E+01	.13260E+01
41	-.27	-.80	.85	.14672E+01	.14739E+01
42	-.35	-.87	.94	.15952E+01	.16052E+01
43	-.44	-.93	1.03	.17072E+01	.17193E+01
44	-.53	-.98	1.12	.18022E+01	.18151E+01
45	-.63	-1.03	1.21	.18794E+01	.18922E+01
46	-.74	-1.06	1.29	.19382E+01	.19501E+01
47	-.84	-1.08	1.37	.19781E+01	.19882E+01
48	-.95	-1.09	1.45	.19986E+01	.20065E+01
49	-1.06	-1.09	1.52	.19997E+01	.20051E+01
50	-1.17	-1.08	1.59	.19813E+01	.19839E+01
51	-1.27	-1.06	1.66	.19437E+01	.19435E+01
52	-1.37	-1.03	1.72	.18871E+01	.18844E+01
53	-1.47	-.99	1.77	.18123E+01	.18072E+01
54	-1.57	-.94	1.83	.17200E+01	.17127E+01
55	-1.66	-.88	1.88	.16109E+01	.16021E+01
56	-1.74	-.81	1.92	.14863E+01	.14763E+01
57	-1.82	-.74	1.96	.13472E+01	.13367E+01
58	-1.89	-.65	2.00	.11953E+01	.11847E+01
59	-1.95	-.56	2.03	.10316E+01	.10216E+01
60	-2.00	-.47	2.05	.85797E+00	.84901E+00
61	-2.04	-.37	2.07	.67615E+00	.66862E+00
62	-2.07	-.27	2.09	.48757E+00	.48207E+00
63	-2.09	-.16	2.10	.29455E+00	.29110E+00
64	-2.10	-.05	2.10	.98468E-01	.97670E-01

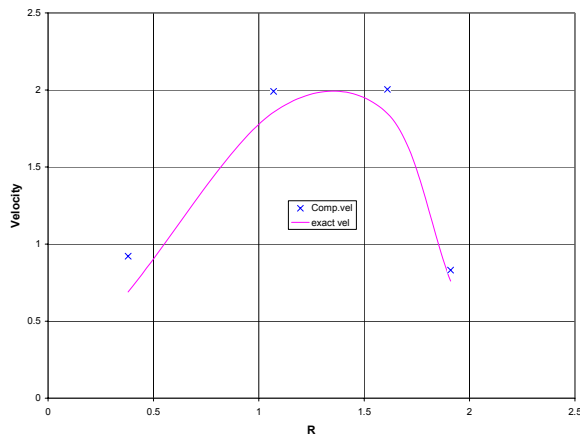


Figure 5: Comparison of computed and analytical velocity distributions over the boundary of a symmetric aerofoil using 8 boundary elements with constant element approach for  $r = 1.1$ ,  $a = 0.1$  and  $Ma = 0.7$ .

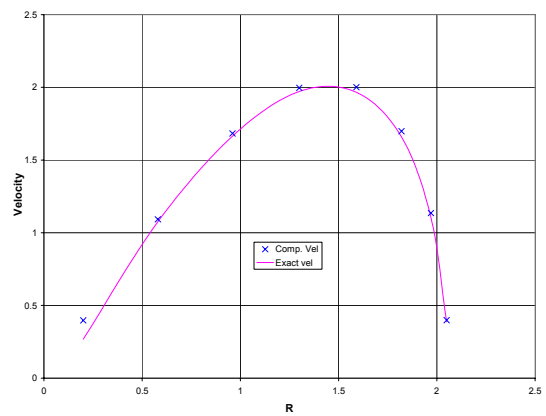


Figure 6: Comparison of computed and analytical velocity distributions over the boundary of a symmetric aerofoil using 16 boundary elements with constant element approach for  $r = 1.1$ ,  $a = 0.1$  and  $Ma = 0.7$ .

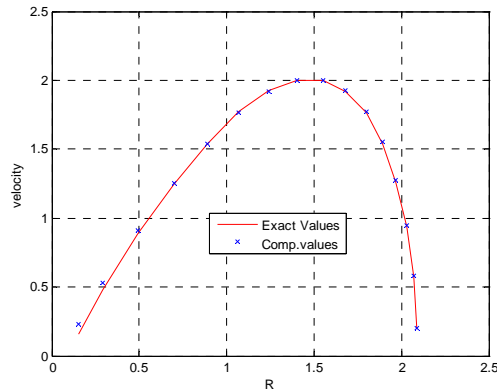


Figure 7: Comparison of computed and analytical velocity distributions over the boundary of a symmetric aerofoil using 32 boundary elements with constant element approach for  $r = 1.1$ ,  $a = 0.1$  and  $Ma = 0.7$ .

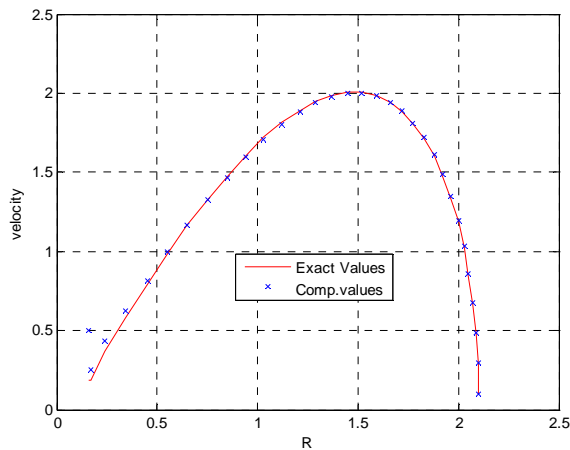


Figure 8: Comparison of computed and analytical velocity distributions over the boundary of a symmetric aerofoil using 64 boundary elements with constant element approach for  $r = 1.1$ ,  $a = 0.1$  and  $Ma = 0.7$ .

## 5. Conclusion

An indirect boundary element method has been applied for the calculation of compressible flow past a symmetric aerofoil with constant element approach. The calculated flow velocities obtained using this method is compared with the analytical solutions for flow over the boundary of a symmetric aerofoil. It is found that the computed results obtained by this method are good in agreement with the analytical ones for the body under consideration and the accuracy of the result increases due to increase of number of boundary elements.

## 6. Acknowledgement

We are thankful to the University of Engineering & Technology, Lahore – Pakistan for the financial support.

## 7. References

- [1] Brebbia, C.A.: “The Boundary element Method for Engineers”, Pentech Press, 1978.
- [2] Brebbia, C.A. and Walker, S.: “Boundary Element Techniques in Engineering”, Newness-Butterworths, 1980.
- [3] C.Y. Chow, “An Introduction to Computational Fluid Mechanics”, John Wiley & Sons, (1979).
- [4] Kellogg, O.D.: “Foundations of Potential Theory”, Frederick Ungar Publishing Company (1929).
- [5] Lamb, H.: “Hydrodynamics” 6<sup>th</sup>, Edition, Cambridge University Press,(1932).
- [6] Milne-Thomson, L.M.: “Theoretical Hydrodynamics”, 5<sup>th</sup> Edition, London Macmillan & Co. Ltd., (1968).
- [7] N.A. Shah, “Ideal Fluid Dynamics”, A-One Publishers, Lahore–Pakistan (2008).
- [8] Hess, J.L. and Smith, A.M.O.: “Calculation of potential flow about arbitrary bodies”, Progress in Aeronautical Sciences, Pergamon Press 1967, 8: 1-158, .
- [9] Luminita G., Gabriela D., Mihai D., “Different Kinds of Boundary Elements for Solving the Problem of the Compressible Fluid Flow Around Bodies – a Comparison Study”, Proceedings of the International Conference of Applied and Engineering Mathematics, 2008; 972–977.
- [10] Luminita Grecu, “A Boundary Element Approach for the Compressible Flow Around Obstacles”, Acta Universitatis Apulensis, Mathematics–Informatic No. 15/2008, 195–213.
- [11] Muhammad, G., Shah, N.A., & Mushtaq, M.: “Indirect Boundary Element Methods for the Flow Past a Circular Cylinder with Constant Element Approach”, Journal of Dohuk University, (Accepted for publication) (2009).
- [12] Mushtaq, M., Shah, N.A., & Muhammad, G. “Comparison of Direct and Indirect Boundary Element Methods for the Flow Past a Circular Cylinder with Constant Element Approach”, Journal of American Science, Vol. 5, No. 4, (2009) U.S.A.